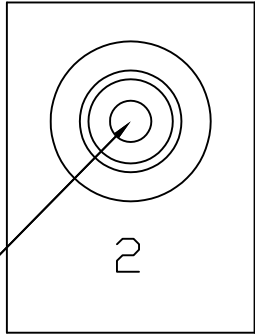
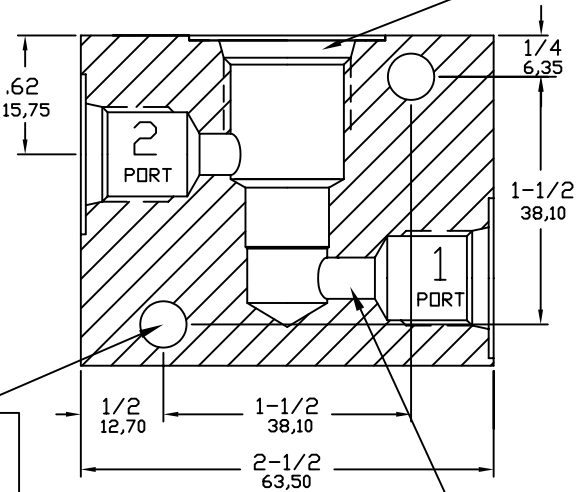


Identification
Front & Back

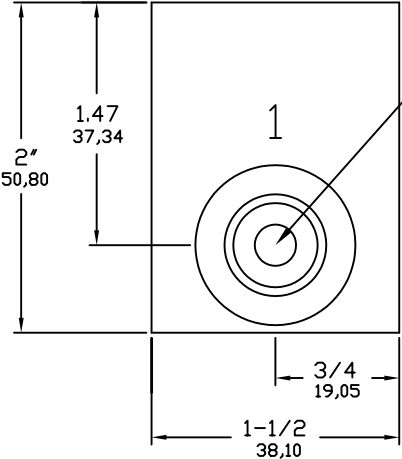
Valve Cavity:
Doering C-8502
Industry 8-2



No. 2
Port



Mounting Holes (2 Pl.)
9/32" Diameter,
Clearance for 1/4" or M6



No. 1
Port

Ø1/4" Diameter
Restriction at Ports 1 & 2

ORDER INFORMATION:

S8502-

Ports 1 & 2	
1	(1/8 NPT)
2	(1/4 NPT)
3	(3/8 NPT)
4	(SAE4, □RB)
6	(SAE6, □RB)

Material Option, Pressure Rating		
Pressure Note: Double pressure rating for Port 1 only.		
Blank	(6061 Aluminum)	3,000 PSIG
S	(304 Stainless)	5,000 PSIG
S316	(316 Stainless)	5,000 PSIG

