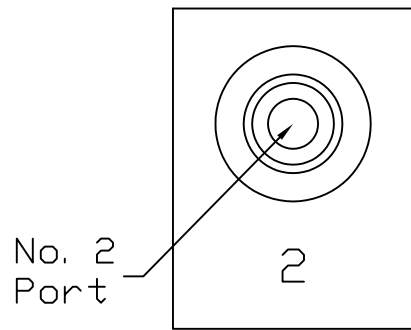
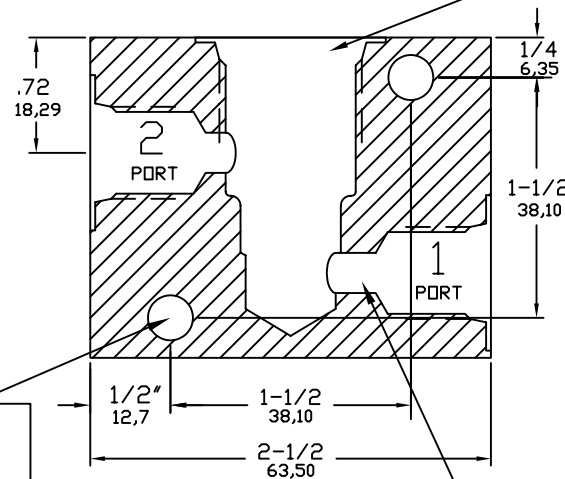


Identification
Front & Back

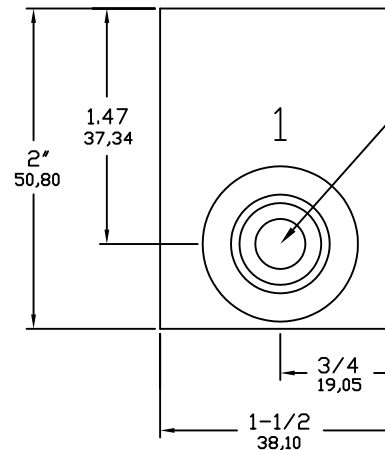
Valve Cavity:
Doering C-8542
Industry 10-2



No. 2
Port



Mounting Holes (2 Pl.)
9/32" Diameter,
Clearance for 1/4" or M6



No. 1
Port

Ø5/16" (7.94mm) Diameter
Restriction at Ports 1 & 2

ORDER INFORMATION:

S8542-

Ports 1 & 2

- 1 (1/8 NPT)
- 2 (1/4 NPT)
- 3 (3/8 NPT)
- 4 (SAE4, □RB)
- 6 (SAE6, □RB)

Material Option, Pressure Rating

Pressure Note: Double pressure rating for Port 1 only.

Blank	(6061 Aluminum)	3,000 PSIG
S	(304 Stainless)	5,000 PSIG
S316	(316 Stainless)	5,000 PSIG

Doering Line Mount Housing for
Cartridge Valve.

Also see Spec. Sheet No. 1201455
for wider Line Mount body style.

Also see Spec. Sheet No. 1202982
for Panel Mount Housing.

