

SPECIFICATIONS:

Dual Air Pilot Operated Hydraulic Spool Valve.
 Four Way, Directional Control or Selector Valve.
 Maximum System Pressure:
 Parts A, B, and P rated to 3,000 PSI.
 Part T rated to 1,500 PSI.
 Pilot Pressure Range: 80 PSI Min. to 150 PSI Max.
 Fluid Temperature: -40°F (-40°C) to 200°F (93.3°C)
 Install Cartridge valve using 1" Wrench
 Valve should screw in freely to the Mount Seal.
 Final tightening to 20 foot pounds torque.
 Use lubricant on external oil seals and mounting threads.
 "Actuator Section" may be rotated to any position after installation.

OPTIONS

Standard seals are Buna-N with Teflon back up rings.
 Optional seals include Viton, Teflon and others.

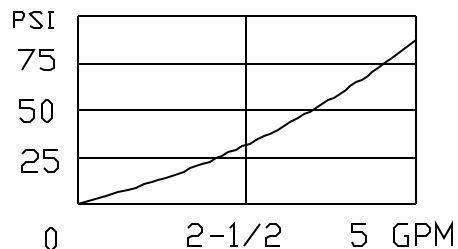
Keys 7 & 20 are additional vents to atmosphere.
 T Option provides 10-32 Threaded ports at these locations.

All Stainless Materials in the Flow or Pilot areas.
 Call for price and delivery on options.

TOOLING

- *Cavity Form Tool: FT-8544
- *Wrench, 1" Open End, Thin Pattern Order No. 720

PRESSURE DROP CHART



PILOT TO SYSTEM RATIO
68:1

"A" DIAMETER
1-1/2" (38.1)

BASIC ORDER INFORMATION

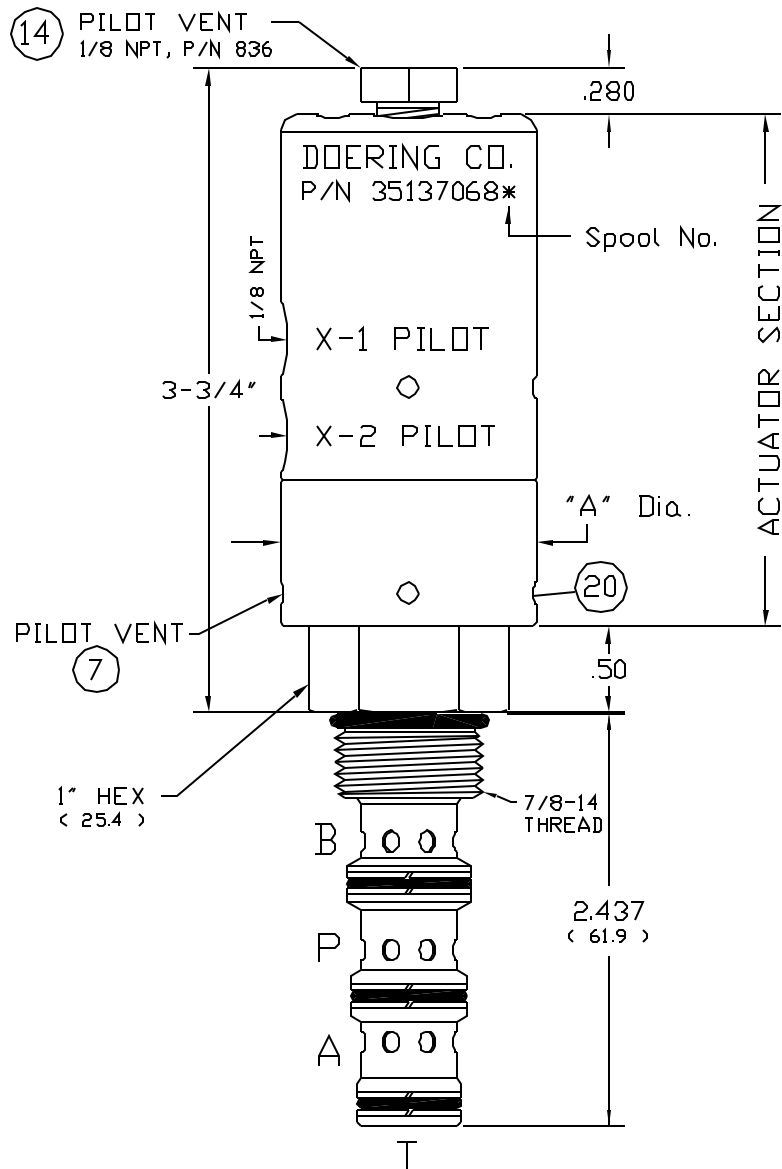
CARTRIDGE VALVE PART NUMBER
 SEE: FUNCTIONAL SYMBOL & P/N

SUB PLATE HOUSING
 S8544
 3/8 NPT

SUB PLATE HOUSING
 S8544-6
 -6 SAE

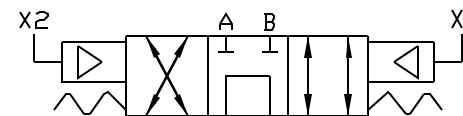
ADAPT CARTRIDGE VALVE TO STANDARD DOI PATTERN
 S-DD3
 Standard DOI Pattern

CARTRIDGE VALVE

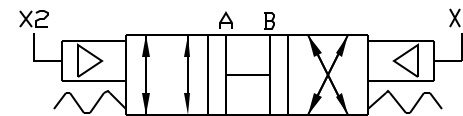


Cartridge Valve Requires Cavity C-8544

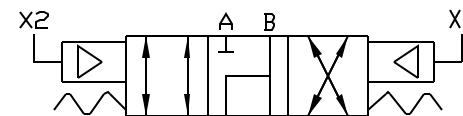
SELECTION



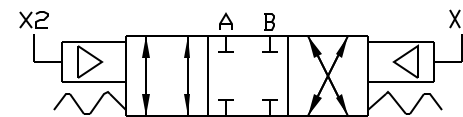
CARTRIDGE VALVE 351370681



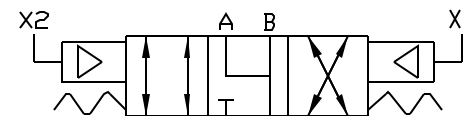
CARTRIDGE VALVE 351370682



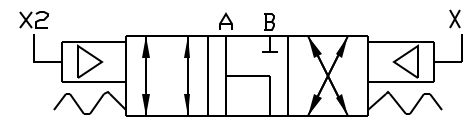
CARTRIDGE VALVE 351370684



CARTRIDGE VALVE 351370685



CARTRIDGE VALVE 351370686



CARTRIDGE VALVE 351370687

4PS SERIES

Three Position 4 Way Spool Valve.
 Dual Pilot Operated, Spring Centered.
 Directional Control or Selector Valve.



6343 RIVER ROAD SE ■ CLEAR LAKE, MN 55319 USA
 Telephone: 320-743-2276 ■ Fax: 320-743-3723
 mailbox@doering.com ■ www.doering.com