

KEY EXPLANATION:

- 5. Teflon Seal
- 6. Filter, 10 Micron, Sintered Bronze
- 7 & 20 Spanner Holes and Vent Holes
- 9. Spring, Spool Return (SST)
- 10. Piston Guide Ring, UHMW
- 11. O-Ring Seal, Piston
- 14. 1/8 NPT Pilot Port
- 19. Teflon Seal
- 27. Spring (Used on valves = "A" Dia. 1-7/8 & 2-1/4")

SPECIFICATIONS:

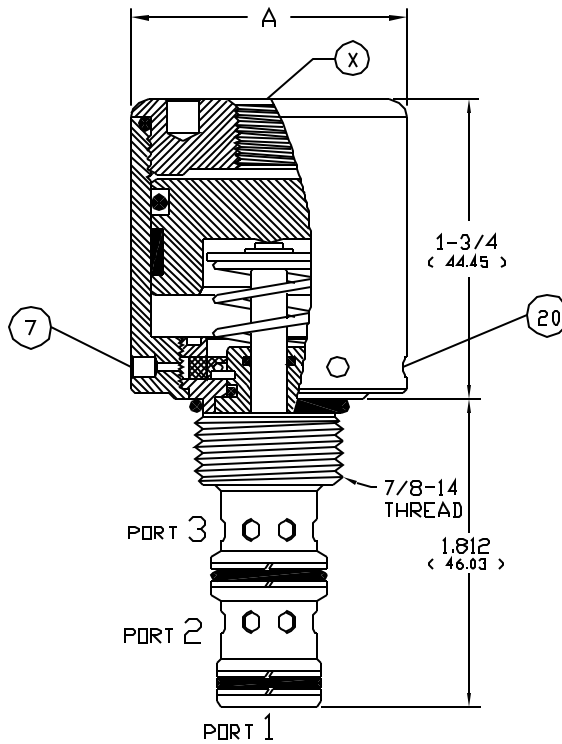
Air Pilot Operated Hydraulic Spool Valve.
 Three Way, Directional Control or Selector Valve.
 Maximum System Pressure:
 Ports 1, 2, and 3 rated to 3,000 PSI.
 Maximum Pilot Pressure (X port) 150 PSI.
 Fluid temperature -40°F (-40°C) to 200°F (93.3°C)
 Install Cartridge Valve using appropriate tool.
 Valve should screw in freely to the Mount Seal.
 Final tightening 15 to 20 foot pounds torque.
 Use lubricant on external oil seals and mounting threads.

TOOLING

- *Cavity Form Tool: FT-B543
- *1/8 (3.175) Pin Spanner Tool
Order No. 471, Ref. Key No. 20
- *3/16 (4.763) Face Spanner Tool
Order No. 482, Ref. Key No. 13

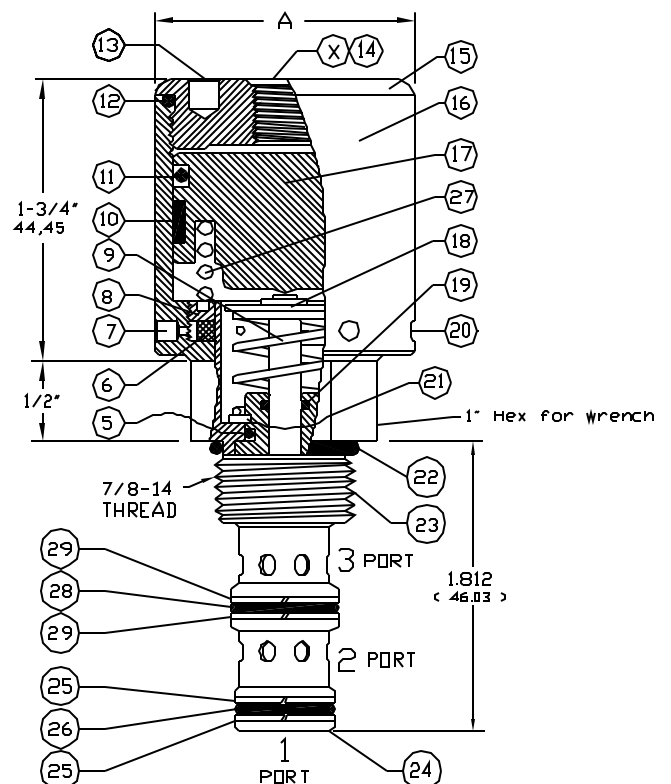
PILOT RATIO NOTES:

- TO CALCULATE THE CORRECT PILOT RATIO VALVE TO ORDER FOLLOW THESE STEPS:
1. Determine the MAXIMUM possible system pressure.
Multiply X 11 = SYSTEM
 2. Determine MINIMUM possible pilot pressure.
Multiply X .9 = PILOT
 3. Divide SYSTEM by PILOT = PILOT TO SYSTEM RATIO
 4. Round up to standard available ratio.



Install Cartridge Valve using No. 471 Spanner Tool.
 Reference Spanner holes, Keys 7 & 20.

Cartridge Valve
 Tamper Resistant Series
 54*37****



Install Cartridge valve using 1" wrench

Cartridge Valve
 Hex Wrench Series
 54H*37****

SPEC. SHEET NO. 1200878 REV. 007

PILOT TO SYSTEM RATIO	" A " DIAMETER	Cavity Specs.	Housing Specs.	CARTRIDGE VALVE NO.	CARTRIDGE VALVE NO.	Functional Symbol
108:1	1-1/2 (38.1)	Valve Cavity: Doering C-8543 Industry 10-3 Spec. Sheet 1200223	Line Mount Housings Doering S8543-*** Aluminum or Stainless Spec. Sheet 1200706	542371086	54H2371086	
131:1	1-5/8 (41.28)			543371316	54H3371316	
183:1	1-7/8 (47.63)			546371836	54H6371836	
277:1	2-1/4 (57.15)			547372776	54H7372776	
108:1	1-1/2 (38.1)			542371087	54H2371087	
131:1	1-5/8 (41.28)			543371317	54H3371317	
183:1	1-7/8 (47.63)			546371837	54H6371837	
277:1	2-1/4 (57.15)			547372777	54H7372777	

PRESSURE DROP CHART

3PS SERIES
 3 Way Spool Valve, Pilot Operated.
 Directional Control or Selector Valve.