

**ORDER INFORMATION:**

**S3M08-**

Housing □ Only.  
 Order Valves Separately.  
 based on FS (Functional Symbol).

Ports 1, 2 & 3

- 1 (1/8 NPT)
- 2 (1/4 NPT)
- 3 (3/8 NPT)
- 4 (SAE4, □RB)
- 6 (SAE6, □RB)

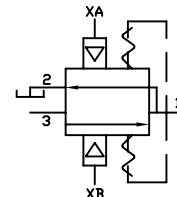
Material Option, Pressure Rating

- Blank (6061 Aluminum) 3,000 PSIG
- S (304 Stainless) 5,000 PSIG
- S316 (316 Stainless) 5,000 PSIG

Control Options using S3M08 Housing and DOERING 2PB Valves.

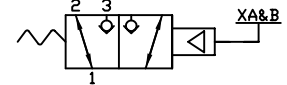
Use 2PB N/O Pressure Relief Valve in Cavity A.  
 Use 2PB N/C Pressure Reducing Valve in Cavity B.  
 Use Common pilot signal to valves A & B.  
 Typical connections: 1 to Cyl., 2 to T, and 3 to P.

FS-1



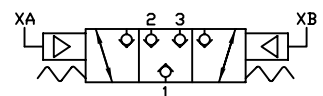
Use Normally Open, 2 Way valve cavity A.  
 Use Normally Closed 2 Way valve in B.  
 Use Common pilot signal to valves A & B.

FS-2



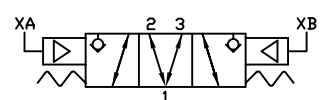
Use Normally Closed, 2 Way valves in cavities A & B. Use separate pilot signals.

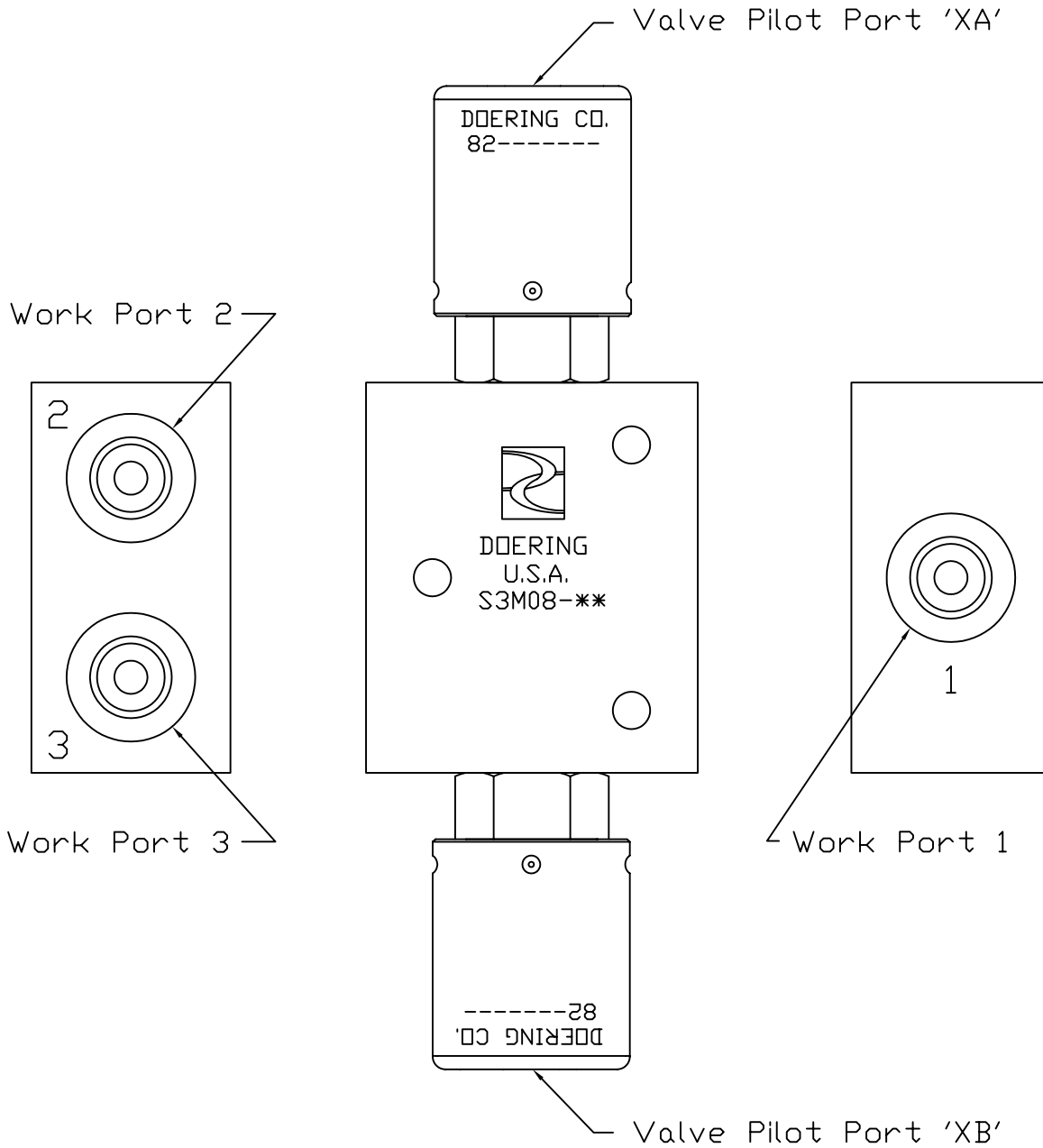
FS-3



Use Normally Open, 2 Way valves in cavities A & B. Use separate pilot signals.

FS-4





Example of Complete Assembly.

Assembly may be mounted in any position.

Please call our applications engineering department for additional assistance.