

Pressure Inlet Port, 1/8 NPT
 See pressure and medium notes
 by each functional symbol.

Stainless Steel Fasteners
 P/N 1200984 Bolts, 10-24 X 1-1/2"
 P/N 1200985 Lock Washers, 10-24
 (3 Sets Used Per Assembly)

Coil Spring, Stainless Steel
 Note: This spring determines
 the minimum pilot pressure.
 Select Spring PSI and modify
 order part number accordingly.
 0050 = 50 PSI Spring
 0075 = 75 PSI Spring
 Additional crack pressures
 available up to 2,000 PSI. Call
 for part number and pricing.

Note: Spring chamber vents
 through E port.

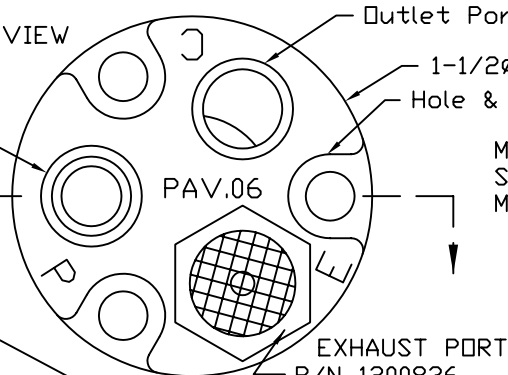
1-1/4 (31.75) Hexagon Mount, SST.
 Use Wrench For Installation.

SAE10 (7/8-14 THD.)
 Also see optional 1/2 NPT Adapter.

Pilot Piston, Stainless Steel
 5000 PSIG Limit.

Retaining Ring for Pilot Piston, SST.

TOP VIEW



Outlet Port (Cylinder) 1/8 NPT.

1-1/2ø (38.1) Diameter, Body

Hole & Counter Bore for Assembly Bolts (3 PL.)

PAV.06

EXHAUST PORT
 P/N 1200836
 1/8 NPT Muffler
 Included with Valve.

Minimum Pilot Pressure Order Information
 See information box pertaining to Coil Spring
 Modify Order No. to reflect spring choice.

Pilot may be Hydraulic or Pneumatic.
 Ports P & C are limited to pressure
 and mediums listed in boxes below.

Wrench, 1-1/4 (31.75), P/N 1200983

Mount Directly to SAE10 O-Ring cavity
 or adapt to 1/2 NPT.

SAE10 to 1/2 NPT Adapter, P/N 1200967

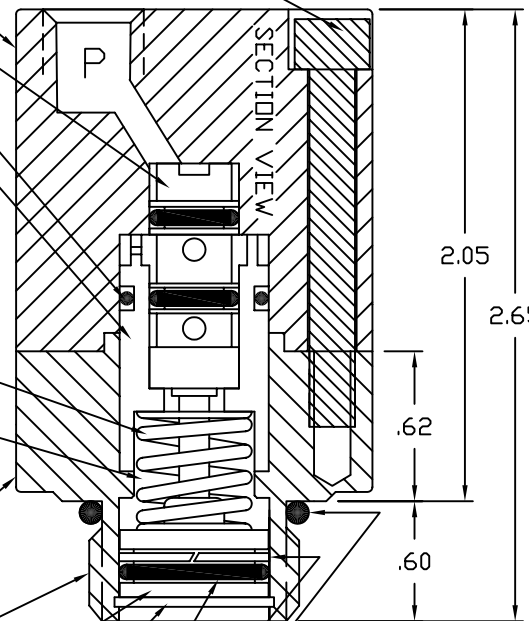
1-1/2ø (38.1) Body, Aluminum

Poppet Style Insert Valve.

O-Ring Seal

Sleeve for Insert Valve

SECTION VIEW



2.05

2.65

.62

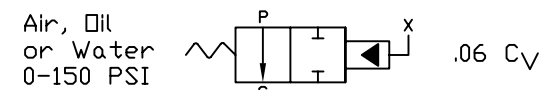
.60

SAE Port, O-Ring

Pilot Piston Back Up Ring

Pilot Piston O-Ring

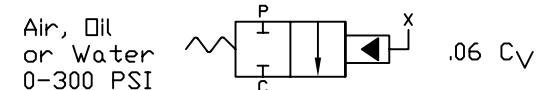
Order No. 11****20 2W, N/O, Pilot Valve.



Air, Oil
 or Water
 0-150 PSI

2 Way, Normally Open, Pilot to Close.

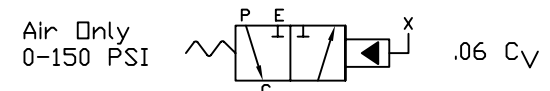
Order No. 11****21 2W, N/C, Pilot Valve.



Air, Oil
 or Water
 0-300 PSI

2 Way, Normally Closed, Pilot to Open.

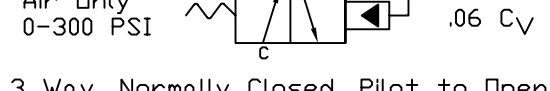
Order No. 11****30 3W, N/O, Pilot Valve.



Air Only
 0-150 PSI

3 Way, Normally Open, Pilot to Close.

Order No. 11****31 3W, N/C, Pilot Valve.



Air Only
 0-300 PSI

3 Way, Normally Closed, Pilot to Open.

PAV.06 SERIES

Piloted Air Valve, .06 CV
 Pilot Operated by Hydraulic or Air.