

SPECIFICATIONS:

Manually Operated Hydraulic Spool Valve.
 Three Way, Directional Control or Selector Valve.
 Maximum System Pressure: Ports 1, 2, and 3) is 3,000 PSIG. See "SHIFT FORCE NOTES"
 Fluid temperature -40°F (-40°C) to 200°F (93.3°C)
 Install Cartridge Valve using No. 471 Spanner Tool.
 Valve should screw in freely to the Mount Seal.
 Final tightening to 15 foot pounds torque.
 Use lubricant on external oil seals and mounting threads.

OPTIONS

Hand Button Operator Shown. Other operators available are Cam Operators and Overtravel Protection. Standard seals are Buna-N with Teflon back up rings. Optional seals include Viton, Teflon and others.

Keys 7 & 20 are vents to atmosphere.
 1 Option provides 10-32 Threaded ports at these locations.

TOOLING

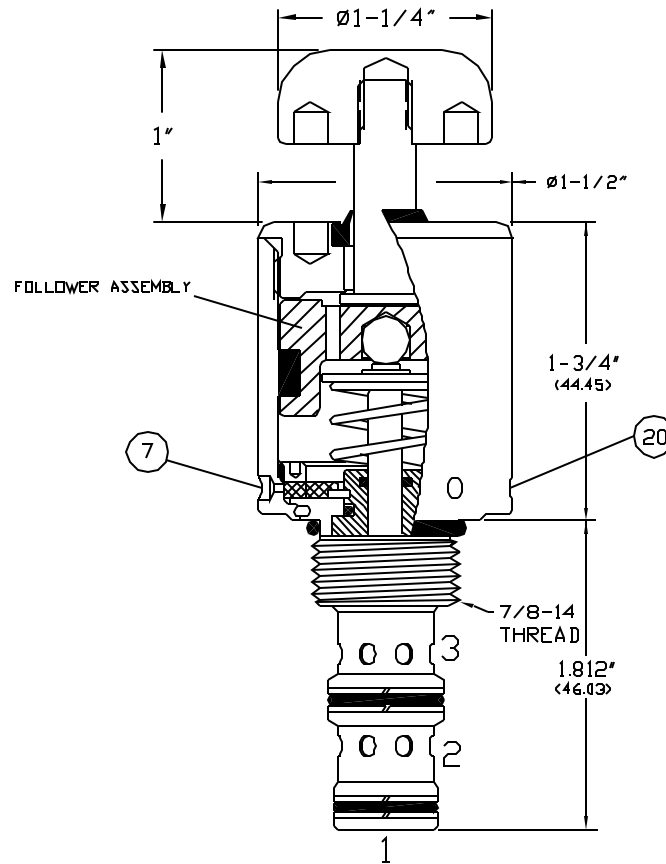
- * Cavity Form Tool: FT-8543
- * 1/8 (3.175) Pin Spanner Tool
 Order No. 471, Ref. Key No. 20
- * 3/16 (4.763) Face Spanner Tool
 Order No. 482, Ref. Key No. 13

SHIFT FORCE NOTES:

10 to 15 Pounds of Force is required to shift the valve spool with zero pressure on port no. 1.

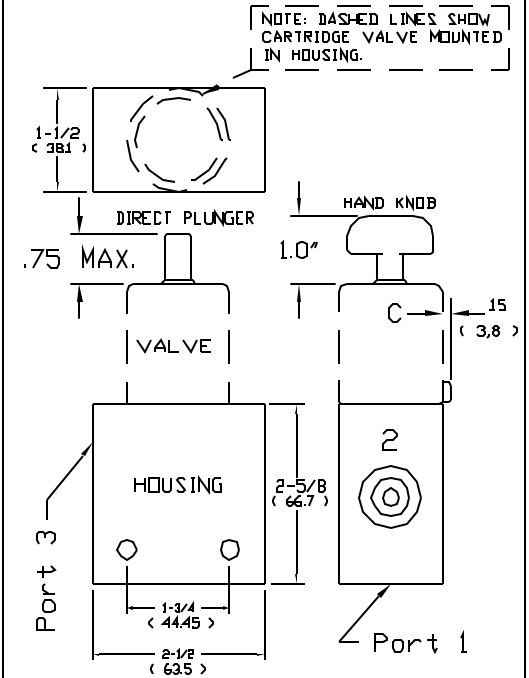
Any pressure on Port No. 1 will increase Force Requirement by .012 X Port No. 1 PSI.

CARTRIDGE VALVE



Cartridge Valve Requires Cavity C-8543 (10-3)

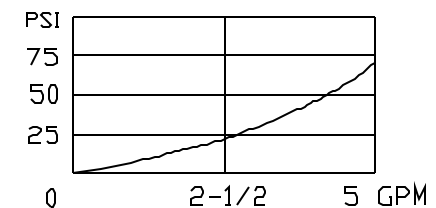
VALVE & HOUSING



STANDARD HOUSINGS

CAT. NO. ALUMINUM	CAT. NO. STAINLESS	PORTING
S8543	S8543-S	3/8 NPT
S8543-2	S8543-2S	1/4 NPT
S8543-6	S8543-6S	SAE6

PRESSURE DROP CHART



3PS SERIES

3 Way Spool Valve, Manually Operated.
 Directional Control or Selector Valve.

1/2" C MAXIMUM APPLICABLE TO 1 OPTION ONLY

CARTRIDGE VALVE NO.

HOUSING PART NO.

APPLICATION NOTES CHOOSING VALVE.

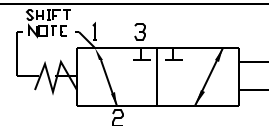
Functional Symbol

.15 (3.8)

54237MOK5

S8543
 - OR -
 S8543-2
 - OR -
 S8543-6

Typical 3 Way, N/C
 Connect as follows:
 1 to TANK
 2 to CYLINDER
 3 to PRESSURE



.15 (3.8)

54237MOK6

S8543
 - OR -
 S8543-2
 - OR -
 S8543-6

Typical 3 Way, N/O
 Connect as follows:
 1 to TANK
 2 to PRESSURE
 3 to CYLINDER

