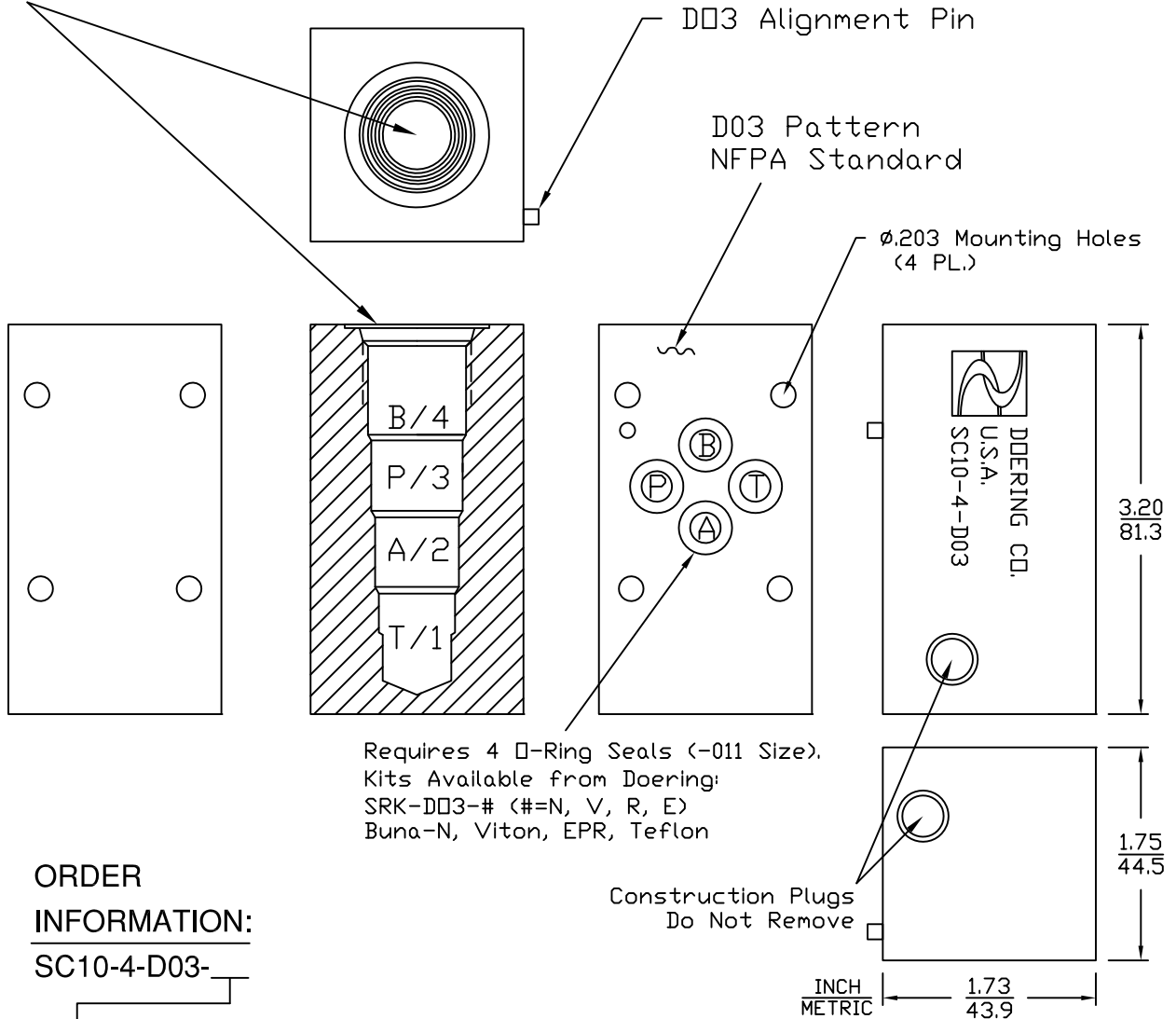


DO3 to 10-4 Adapter

Cartridge Valve Cavity:
Doering C-8544 (10-4)
Cavity Drawing: 1200671



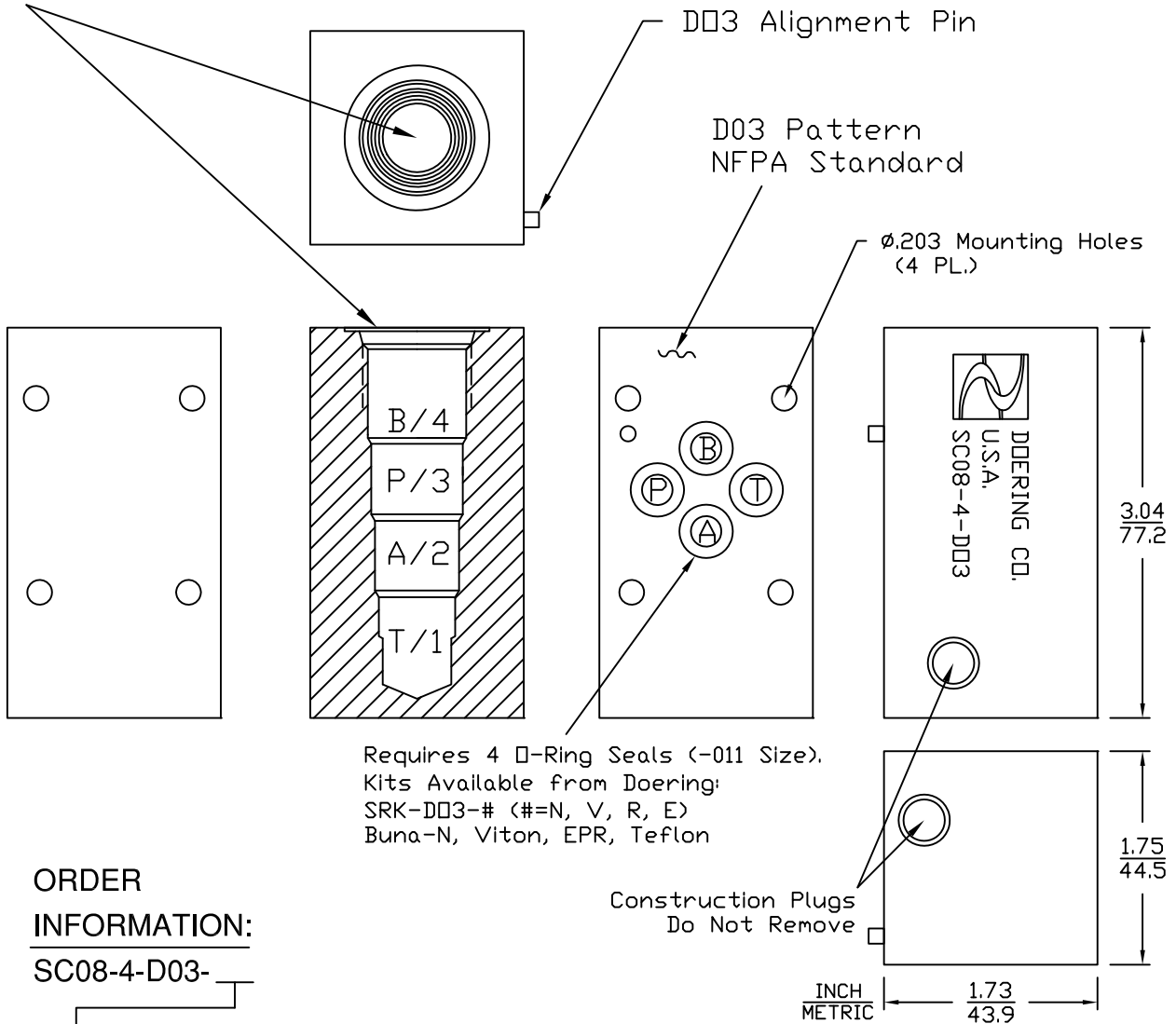
ORDER INFORMATION:
SC10-4-D03-

ENTER: For Material Option, Pressure Rating

Blank	(6061 Aluminum Body, Brass Construction Plugs)	3,000 PSIG
S	(304 Stainless Body, SST. Construction Plugs)	5,000 PSIG
S316	(316 Stainless Body, SST. Construction Plugs)	5,000 PSIG

D03 to 8-4 Adapter

Cartridge Valve Cavity:
Industry Cavity 8-4
Confirm cavity detail.



**ORDER
INFORMATION:**

SC08-4-D03-

ENTER: For Material Option, Pressure Rating

Blank	(6061 Aluminum Body, Brass Construction Plugs)	3,000 PSIG
S	(304 Stainless Body, SST. Construction Plugs)	5,000 PSIG
S316	(316 Stainless Body, SST. Construction Plugs)	5,000 PSIG