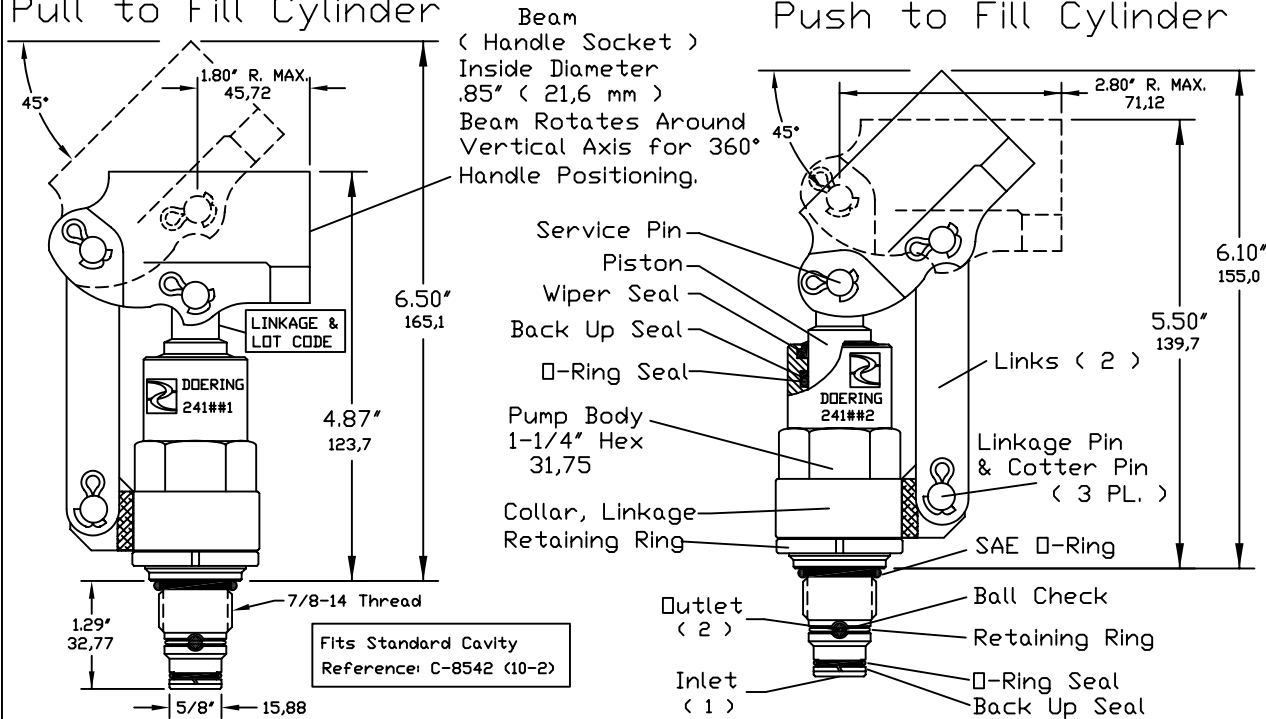


# 241 SERIES CARTRIDGE PUMPS

Push Style Linkage:  
Push to Pressurize  
Pull to Fill Cylinder

Pull Style Linkage:  
Pull to Pressurize  
Push to Fill Cylinder



Handle  
1201459 Spec. Sheet

Cavity  
Cavity Drawing:  
1200621 Spec. Sheet

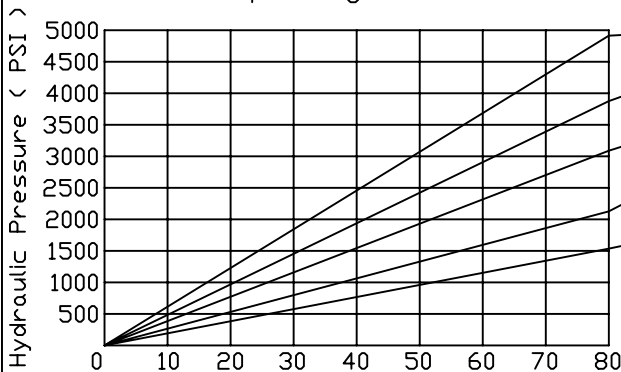
Housing  
Line Mount Housings:  
1200674 and 1201455  
Spec. Sheets

Panel Mount Housings:  
1202982 and 1202990  
Spec. Sheets

Additional Feature:  
Spring Loaded Inlet Check  
allows operation in any  
position.

## PUMP SELECTION GRAPH

Maximum Safe Operating Pressure 5000 PSI



Do not exceed handle force of 80 Pounds.

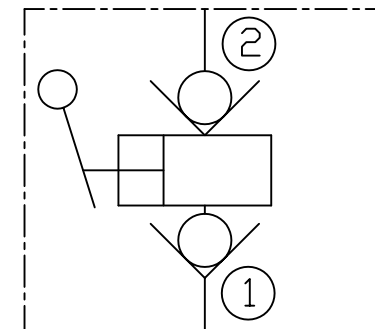
DISPLACEMENT, FULL STROKE, Cubic Inches	Cubic Centimeters	PUSH STYLE ORDER NO.	PULL STYLE ORDER NO.	HOUSING BODY NO.
		.196	3,2cc	
.249	4,0cc	241561	241562	For Stainless Steel add Letter S to end of part number.
.307	5,0cc	241621	241622	
.442	7,2cc	241751	241752	
.601	9,8cc	241871	241872	

**Seals:**  
Seals Are Buna-N with Teflon Back Up Rings  
Optional Seal materials include Viton, Teflon and others.  
Call for pricing on alternate seal materials.  
Wiper Ring is Urethane.

**Installation:**  
Lubricate seals.  
Use 1-1/4" Wrench. Torque to approximately 50 Foot Pounds.

## 241 SERIES

Functional Symbol:



6343 RIVER ROAD SE ■ CLEAR LAKE, MN 55319 USA  
Telephone: 320-743-2276 ■ Fax: 320-743-3723  
mailto:doering.com ■ www.doering.com

