

SPECIFICATIONS:

Manually Operated poppet valve.
Two way, normally closed, push operator to open.
Maximum pressure 5,000 PSI Port 1, 3,000 PSI Port 2
Use Port no. 1 for pressure inlet.
See 'SHIFT FORCE NOTES' regarding operating force required to open valve.
1/4" Stroke is approximate.
Overtravel protection feature is available.
Use 1" wrench to install valve.
Torque to 20 foot pounds.
Use lubricant on external oil seals and mounting threads.
Fluid temperature -45°F (-42.7°C) to 200°F (93.3°C)

STANDARD OPTIONS

Handknob operator shown. Other operators available are Can Operators and Overtravel Protection. Handknob is Aluminum standard or Stainless optional.
T Option 10-32 vent parts at Key 7 (2 Places)
Seat (Key 4) is hard stainless. Optional soft seat is available. Add letter K after H in part no. to order Kel-F BI soft seat.
Seal Materials used are Buna-N and Teflon.
Optional seal and construction materials available.

SHIFT FORCE NOTES:

To determine operator Force in POUNDS to shift valve, multiply pressure at Port No. 1 pressure X .062
Add the result to 15 pounds required to compress spring.

Example: 1,000 PSI System
1,000 X .062 = 62#
62 + 15 = 77#
Total Operator Force = 77#

CARTRIDGE VALVE

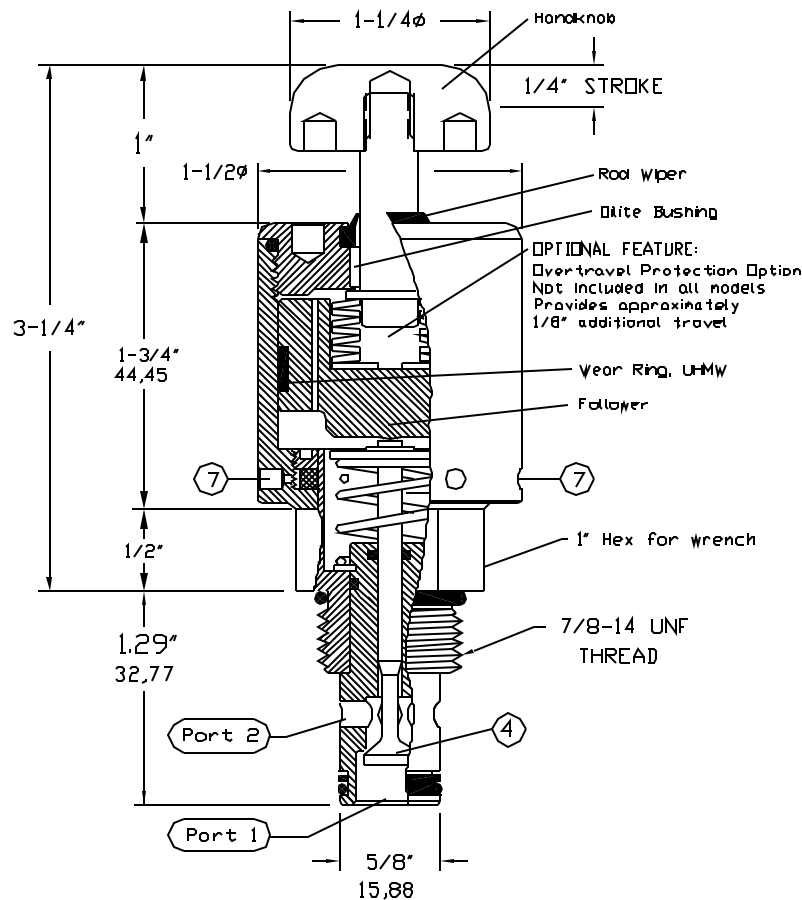
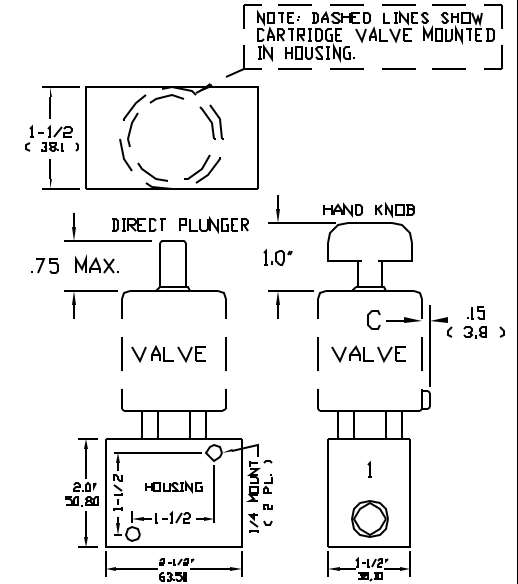


Illustration shows: 84H209MPK1

VALVE & HOUSING



CAVITY USED
C-8542 Cavity (10-2)

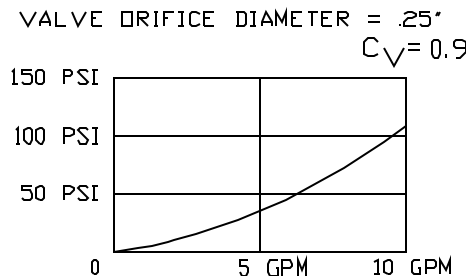
STANDARD HOUSINGS		
CAT. NO. ALUMINUM	CAT. NO. STAINLESS	PORTING
S8542	S8542-S	3/8 NPT
S8542-2	S8542-2S	1/4 NPT
S8542-6	S8542-6S	SAE6

Valve Number: 84H209M##1

□ = No Overtravel Protection
P = Overtravel Protection

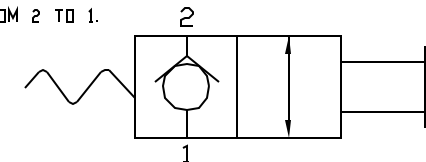
D = Direct Plunger
K = Knob, Aluminum
S = Knob, Stainless

PRESSURE DROP CHART



2PB SERIES

IN CLOSED POSITION, VALVE DOES NOT FREE FLOW FROM 2 TO 1.



2PB N/C

2 Way Poppet Valve, Manually Operated