

SPECIFICATIONS:

Normally Closed Check Valve
 Manually operate to Open
 Maximum pressure at Ports 1 and 2 is 5,000 PSI.
 See 'SHIFT FORCE NOTES' regarding operating force required to open valve.
 1/4" Stroke is approximate.
 Overtravel protection feature is available.
 Install Cartridge valve using 1" wrench
 Final tightening to 20 foot pounds torque.
 Use lubricant on external oil seals and mounting threads.
 Fluid temperature -45°F (-42.7°C) to 200°F (93.3°C)

STANDARD OPTIONS

Handknob operator shown. Other operators available are Cam Operators and Overtravel Protection. Handknob is Aluminum standard or Stainless optional.
 T Option 10-32 vent ports at Key 7 (2 Places)
 Seat (Key 4) material is heat treated Stainless.
 Seal Materials used are Buna-N and Teflon.
 Optional seal and construction materials available.

SHIFT FORCE NOTES:

To determine operator Force in POUNDS to shift valve, multiply pressures at port 1 and port 2 times the respective areas:
 Port No. 1 pressure X .013
 Port No. 2 pressure X .030
 Add the greater of these forces to 15 pounds required to compress springs 3 & 9.

Example: 1,000 PSI System
 1,000 X .013 = 13#
 13 + 15 = 28#
 Total Operator Force = 28#

CARTRIDGE VALVE

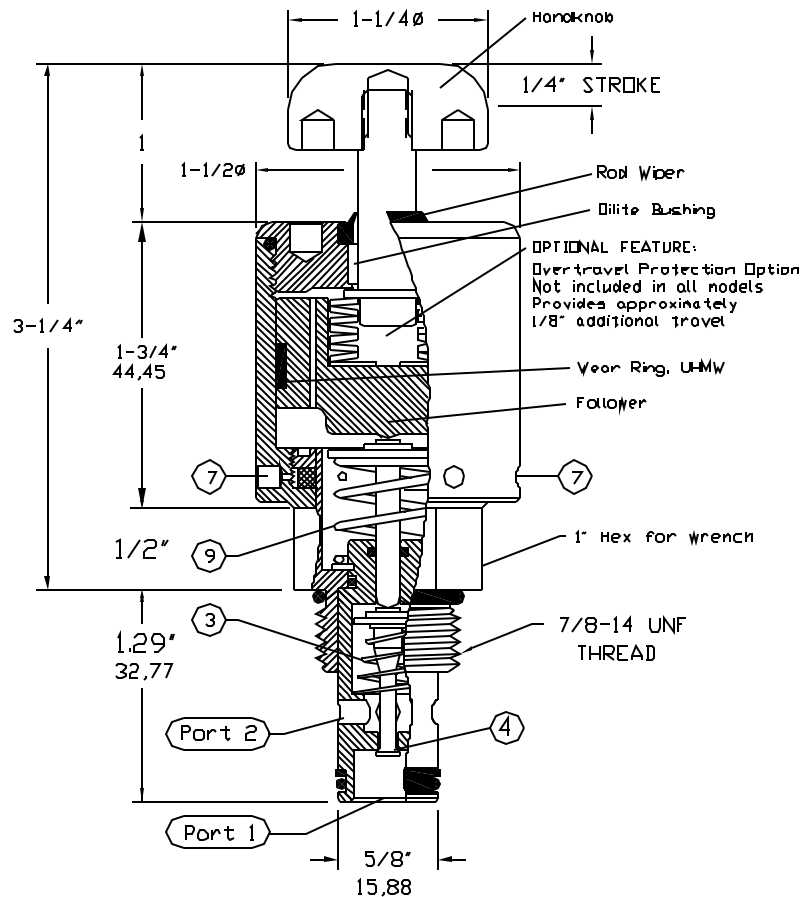
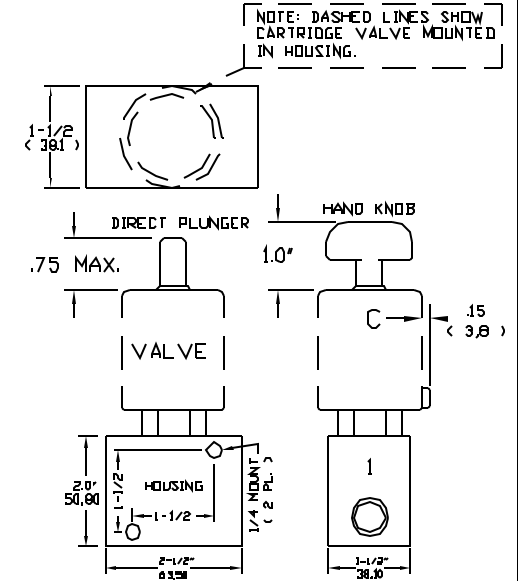


Illustration shows: 94H42MPK33

VALVE & HOUSING

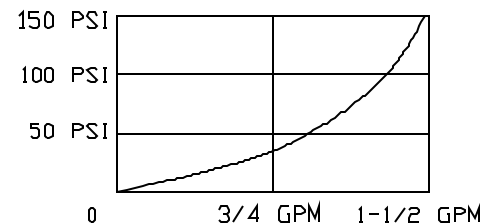


CAVITY USED
 C-8542 Cavity (10-2)

STANDARD HOUSINGS		
CAT. NO. ALUMINUM	CAT. NO. STAINLESS	PORTING
S8542	S8542-S	3/8 NPT
S8542-2	S8542-2S	1/4 NPT
S8542-6	S8542-6S	SAE6

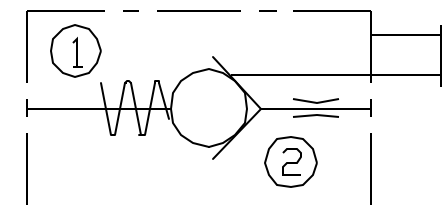
PRESSURE DROP CHART $C_v = 0.1$

VALVE ORIFICE DIAMETER = .09"
 Add 33 PSI Seat Crack Pressure



POC SERIES

DECOMPRESSION OR LOW FLOW



Check Valve, Manually Operated to Open

Valve Number: 94H42M##33

□ = No Overtravel Protection
 P = Overtravel Protection

D = Direct Plunger
 K = Knob, Aluminum
 S = Knob, Stainless