

SPECIFICATIONS:

Normally Closed Check Valve
Manually operate to Open

Maximum pressure at Ports 1 and 2 is 5,000 PSI.

See 'SHIFT FORCE NOTES' regarding operating force required to open valve.

1/4" Stroke is approximate.

Overtravel protection feature is available.

Install Cartridge valve using 1" wrench

Final tightening to 20 foot pounds torque.

Use lubricant on external oil seals and mounting threads.

Fluid temperature -45°F (-42.7°C) to 200°F (93.3°C)

STANDARD OPTIONS

Handknob operator shown. Other operators available are Can Operators and Overtravel Protection.

Handknob is Aluminum standard or Stainless optional.

T Option 10-32 vent parts at Key 7 (2 Places)

Seat (Key 4) material is heat treated Stainless.

Seal Materials used are Buna-N and Teflon.

Optional seal and construction materials available.

SHIFT FORCE NOTES:

15 Pounds of Force is required to compress springs, Key 3 & 9

To determine the additional operating force imposed by the system pressure, multiply the system pressure X .03 and add the result to the 15 Pound spring force.

Example: 1,000 PSI System

1,000 X .03 = 30#

30 + 15 = 45#

Total Operator Force = 40#

CARTRIDGE VALVE

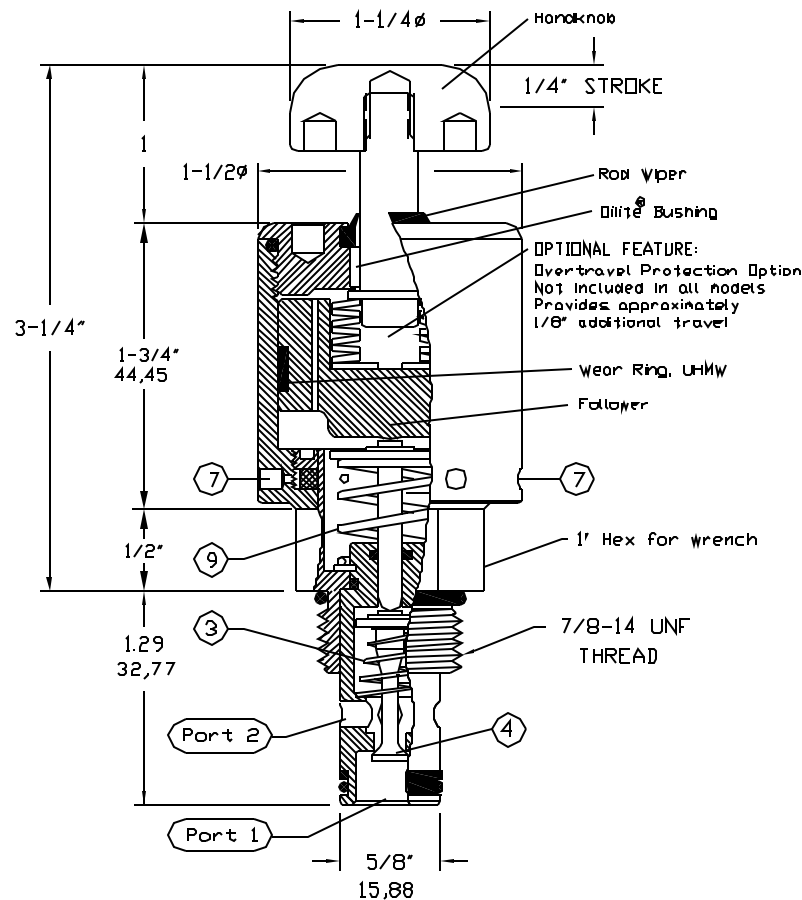
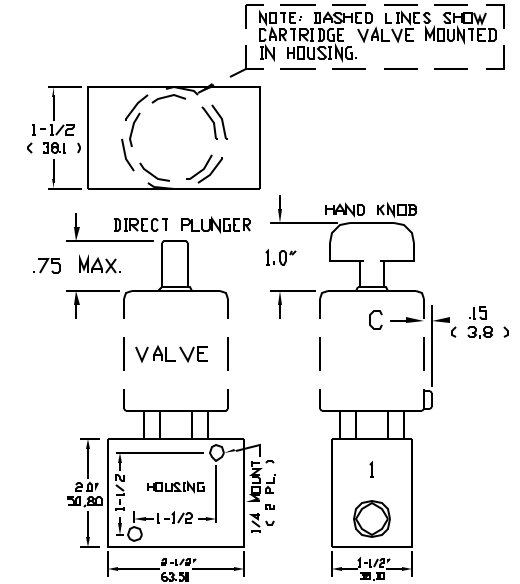


Illustration Shows: 94H72MPK15

VALVE & HOUSING

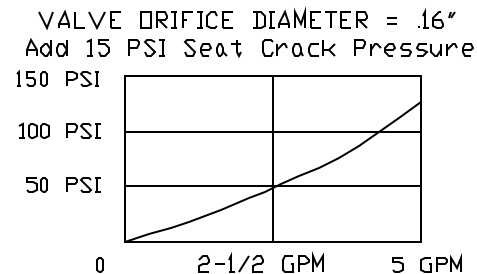


CAVITY USED
C-8542 Cavity (10-2)

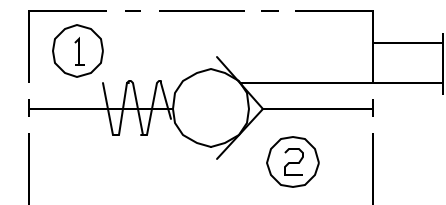
STANDARD HOUSINGS

CAT. NO. ALUMINUM	CAT. NO. STAINLESS	PORTING
S8542	S8542-S	3/8 NPT
S8542-2	S8542-2S	1/4 NPT
S8542-6	S8542-6S	SAE6

PRESSURE DROP CHART $C_v = 0.4$



POC SERIES



Check Valve, Manually Operated to Open

Valve Number: 94H72M##15

□ = No Overtravel Protection
P = Overtravel Protection

D = Direct Plunger
K = Knob, Aluminum
S = Knob, Stainless