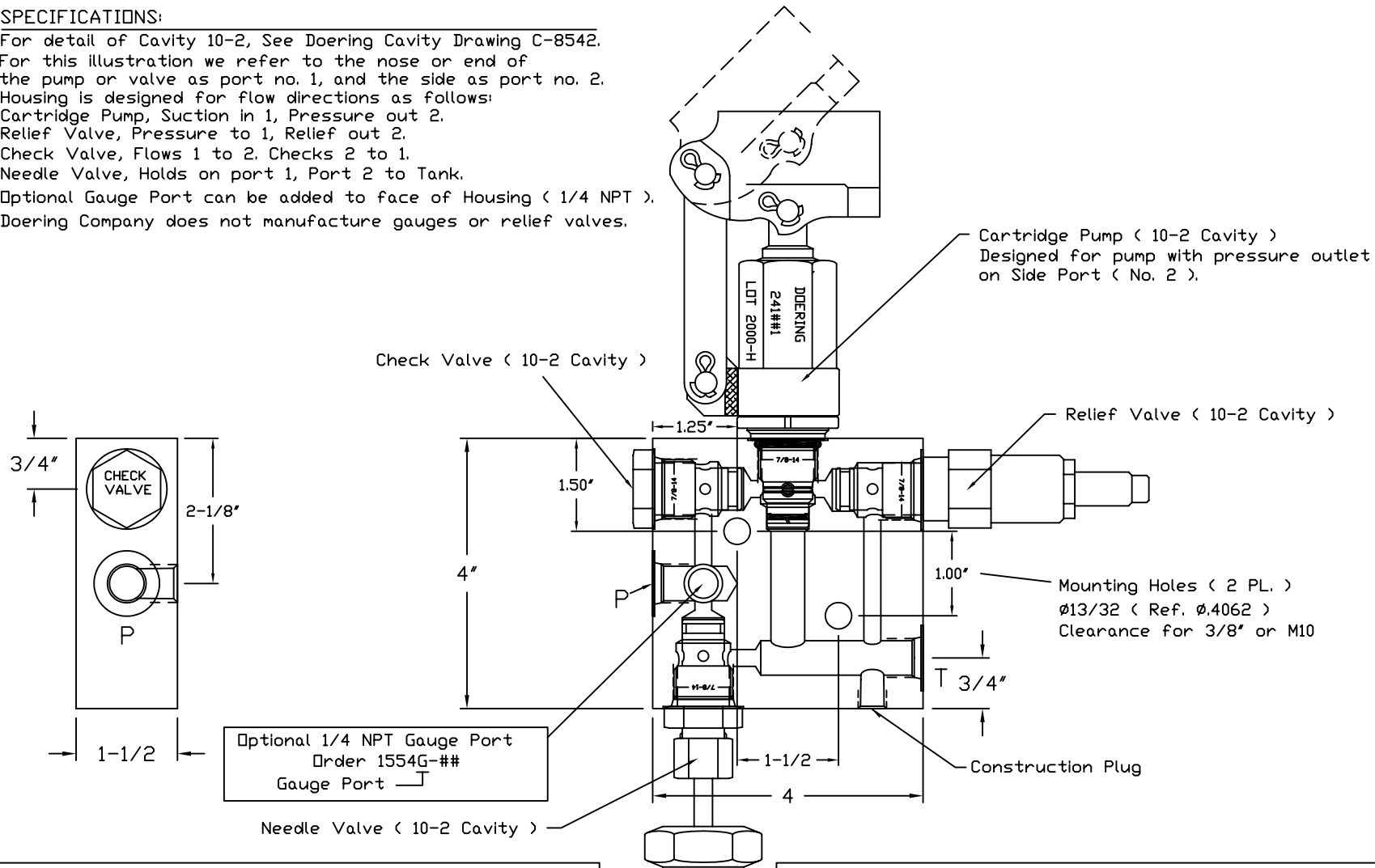


SPECIFICATIONS:

For detail of Cavity 10-2, See Doering Cavity Drawing C-8542.
 For this illustration we refer to the nose or end of the pump or valve as port no. 1, and the side as port no. 2.
 Housing is designed for flow directions as follows:
 Cartridge Pump, Suction in 1, Pressure out 2.
 Relief Valve, Pressure to 1, Relief out 2.
 Check Valve, Flows 1 to 2. Checks 2 to 1.
 Needle Valve, Holds on port 1, Port 2 to Tank.
 Optional Gauge Port can be added to face of Housing (1/4 NPT).
 Doering Company does not manufacture gauges or relief valves.



6343 RIVER ROAD SE ■ CLEAR LAKE, MN 55319 USA
 Telephone: 320-743-2276 ■ Fax: 320-743-3723
 mailbox@doering.com ■ www.doering.com

SPEC. SHEET NO. 1201554 REV. 005

Order Information
 Order Components Separately.

Aluminum Housings 3,000 PSI		Stainless Housings 5,000 PSI	
P & T Ports	Order No.	P & T Ports	Order No.
1/8 NPT	1554#-1	1/8 NPT	1554#-1S
1/4 NPT	1554#-2	1/4 NPT	1554#-2S
3/8 NPT	1554#-3	3/8 NPT	1554#-3S
SAE4 (□-Ring)	1554#-4	SAE4 (□-Ring)	1554#-4S
SAE6 (□-Ring)	1554#-6	SAE6 (□-Ring)	1554#-6S

Enter G for 1/4 NPT Gauge Port

1554 Series Housings
 Multi-Function Housings for
 Cartridge Hand Pump,
 Check Valve, Needle Valve,
 and Relief Valve.
 Order Components Separately.

