

KEY EXPLANATION:

- 5. O-Ring Seal, TFE
- 6. Filter, 10 Micron, Sintered Bronze
- 19. Poppet Seal, TFE
- 27. Spring (Used on valves = 'A' Dia. 1-7/8 & 2-1/4)

Air Pilot Operated Hydraulic Spool Valve.
 Four Way, Directional Control or Selector Valve.
 Maximum System Pressure:
 Ports A, B, P, and T rated to 3,000 PSI.
 Maximum Pilot Pressure (X port) 150 PSI.
 Fluid temperature -40°F (-40°C) to 200°F (93.3°C)
 Install Cartridge valve using 1" wrench
 Valve should screw in freely to the Mount Seal.
 Final tightening to 20 foot pounds torque.
 Use lubricant on external oil seals and mounting threads.

OPTIONS

Pilot Port (Key X) is 1/8 NPT.
 Optional Pilot Porting includes 1/4 NPT, SAE4, and SAE6
 Standard seals are Buna-N with Teflon back up rings.
 Optional seals include Viton, Teflon and others.
 Keys 7 & 20 are vents to atmosphere.
 T Option provides 10-32 Threaded ports at these locations.

TOOLING

- * Cavity Form Tool: FT-8544
- * 1/8 (3.175) Pin Spanner Tool
Order No. 471
- * 3/16 (4.763) Face Spanner Tool
Order No. 482

PILOT RATIO NOTES:

- TO CALCULATE THE CORRECT PILOT RATIO VALVE TO ORDER FOLLOW THESE STEPS:
1. Determine the MAXIMUM possible system pressure.
Multiply X 1.1 = SYSTEM
 2. Determine MINIMUM possible pilot pressure.
Multiply X .9 = PILOT
 3. Divide SYSTEM by PILOT = PILOT TO SYSTEM RATIO
 4. Round up to standard available ratio.

Pilot to System Ratio applies to Port 1 only.

" A " DIAMETER

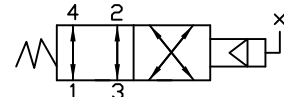
Cartridge Valve Order Number

Functional Symbol Suggested Connections

108:1
131:1
183:1
277:1

1-1/2 (38.1)
1-5/8 (41.28)
1-7/8 (47.63)
2-1/4 (57.15)

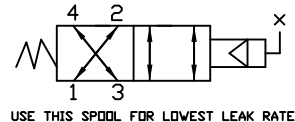
44H2371080
44H3371310
44H6371830
44H7372770



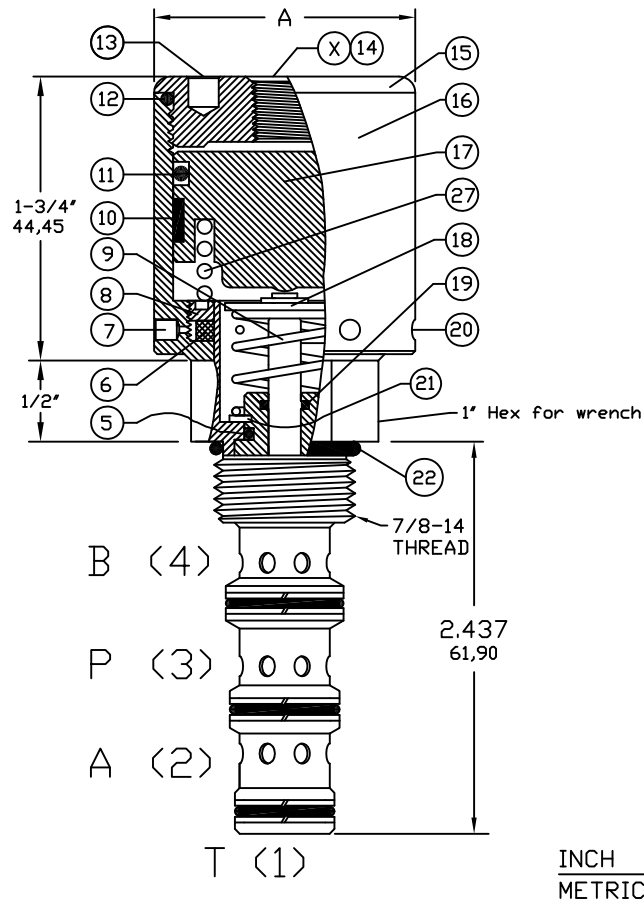
108:1
131:1
183:1
277:1

1-1/2 (38.1)
1-5/8 (41.28)
1-7/8 (47.63)
2-1/4 (57.15)

44H2371083
44H3371313
44H6371833
44H7372773



CARTRIDGE VALVE



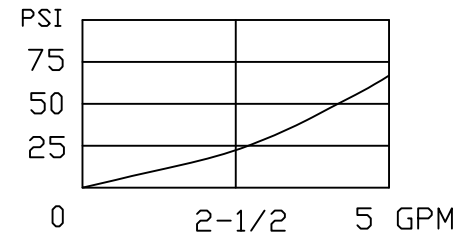
Cavity & Housing

Cavity C-8544 (10-4):
See Spec. Sheet 1200671

Line Mount Housings:
See Spec. Sheets
1200675 and 1202930

Panel Mount Housings:
See Spec. Sheets
1202984 and 1203290


PRESSURE DROP CHART



4PS SERIES

4 Way Spool Valve, Pilot Operated.
Directional Control or Selector Valve.

6343 RIVER ROAD SE ■ CLEAR LAKE, MN 55319 USA
 Telephone: 320-743-2276 ■ Fax: 320-743-3723
 mailbox@doering.com ■ www.doering.com

 DOERING