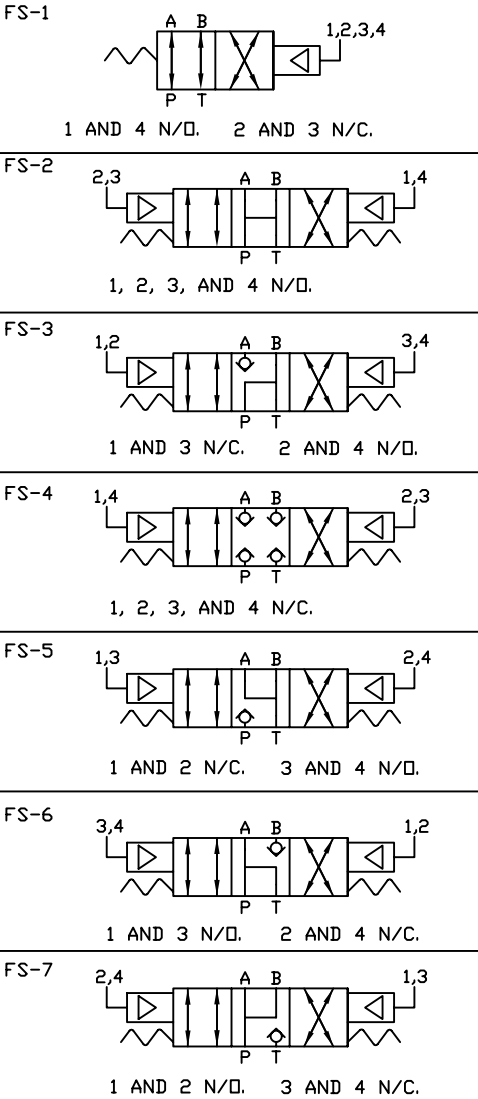
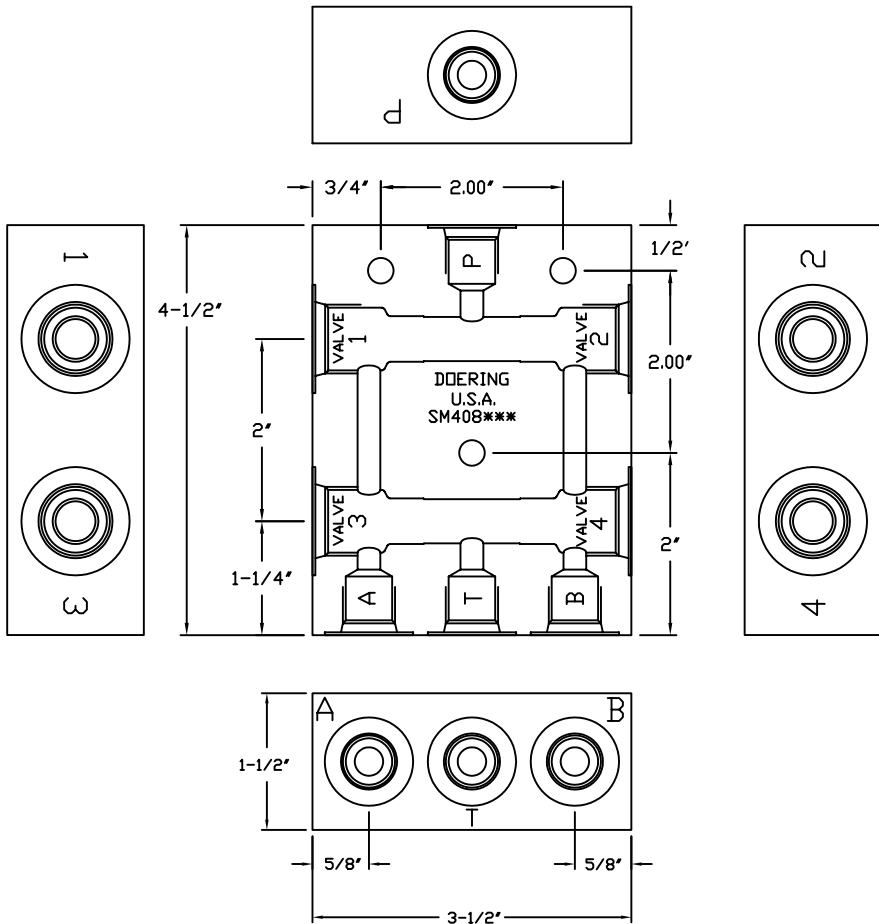


4 WAY POPPET FUNCTIONS USING FOUR, 2 WAY POPPET VALVES

CONTROL OPTIONS (FUNCTIONAL SYMBOLS)
 VALVE POSITIONS AND TYPES USED.
 N/C = NORMALLY CLOSED
 N/O = NORMALLY OPEN
 Proper Valve Selection and Assembly
 is required to achieve functionality
 corresponding Functional Symbol (FS)
 required for the application.
 FS-# (Select Functional Symbol)



ORDER INFORMATION FOR HOUSING ONLY.
 ORDER 4 CARTRIDGE VALVES SEPARATELY.

SEE PRESSURE AND PORT OPTIONS BELOW:

Aluminum Housing
 3000 PSIG Rated

STAINLESS HOUSING
 5000 PSIG Rated

CAT. NO.	PORTING
SM408-1	1/8 NPT
SM408-2	1/4 NPT
SM408-3	3/8 NPT
SM408-4	SAE4
SM408-6	SAE6

CAT. NO.	PORTING
SM408-1S	1/8 NPT
SM408-2S	1/4 NPT
SM408-3S	3/8 NPT
SM408-4S	SAE4
SM408-6S	SAE6

PILOT VALVE SELECTION:

IN MAKING RATIO SELECTION
 NOTE VALVES 1 AND 2 ARE
 AFFECTED BY P (INLET PRESSURE).
 VALVES 3 AND 4 MAY SEE
 FULL PRESSURE ON THE SIDE PORT
 AND TANK PRESSURE ON THE
 BOTTOM PORT. VALVES 3 AND 4
 MAY BE A LOWER PILOT RATIO.

NOTE THE 2" CENTER DISTANCE
 ALLOWANCE FOR "A" DIAMETERS
 OF CARTRIDGE VALVES.

SEE SPECIFICATION SHEETS 2PB N/C
 AND 2PB N/O FOR ADDITIONAL VALVE
 ORDERING INFORMATION.

THE SM408*** HOUSINGS REQUIRE
 VALVES TO FIT C-8502 CAVITIES.