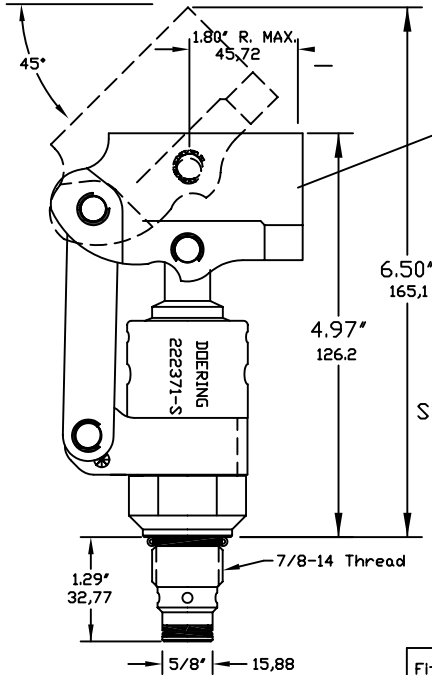


222-S SERIES CARTRIDGE PUMPS

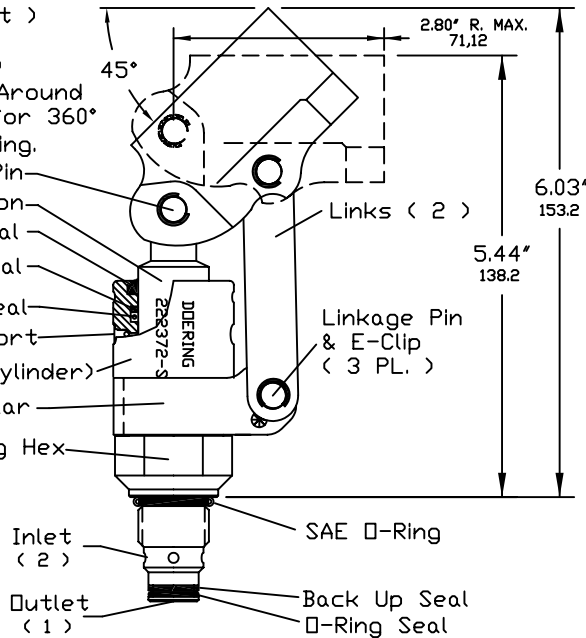
Push Style Linkage:
Push to Pressurize
Pull to Fill Cylinder



Beam
(Handle Socket)
Inside Diameter
.85" (21,6 mm)
Beam Rotates Around
Vertical Axis for 360°
Handle Positioning.
Service Pin
SST. Piston
Wiper Seal
Back Up Seal
O-Ring Seal
Purge Port
SST. Pump Body(Cylinder)
SST. Collar
1-1/4 Wrenching Hex

Fits Standard Cavity
Reference: C-8542

Pull Style Linkage:
Pull to Pressurize
Push to Fill Cylinder



Fits Standard Cavity
Reference: C-8542

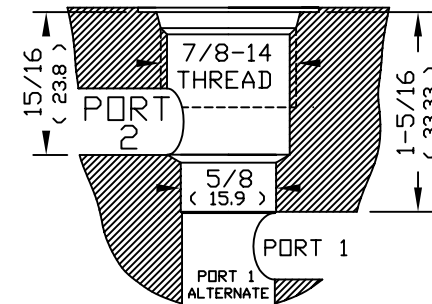
FEATURES

All parts are Stainless Steel except Beam (Handle Socket), which is Electroless Nickel plated Steel.
Sprung checks, zero leak with hydraulic oil.
Rated to 10,000 PSI back pressure at port 1.

PUMP MOUNTING & AIR PURGE NOTES:

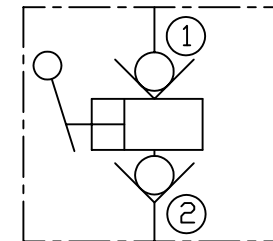
Pump may be mounted in any position. When mounted with No. 1 port facing up, pump will self purge. When mounted with No. 1 port facing down, pump may be purged by loosening one of the purge port plugs located on side of pump body (cylinder) and operating piston.

CAVITY

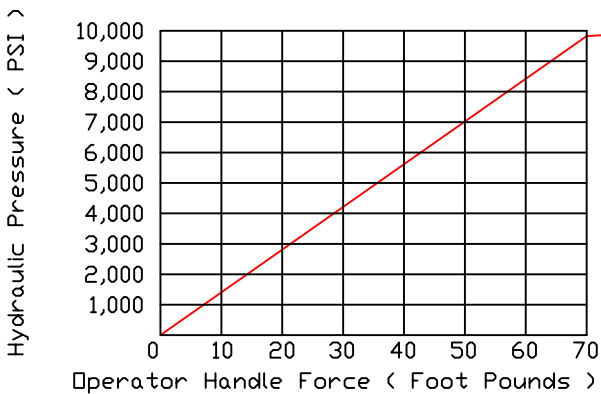


SPEC. SHEET NO. 1200023 FOR CAVITY.

222-S SERIES



PUMP PERFORMANCE GRAPH



DISPLACEMENT, FULL STROKE, Cubic Inches	Cubic Centimeters	PUSH STYLE LINKAGE ORDER NO.	PULL STYLE LINKAGE ORDER NO.
0.1	1,6cc	222371-S	222372-S

CAVITY REFERENCE
SPEC. SHEET NO. 1200023 FOR CAVITY.

HOUSING GROUP

Housing S8542-***
Spec. Sheet No. 1200706
Caution: Pressure rating on housing may not match the pressure rating on the pump.
Pump Piston not drawn to scale.

ACCESSORIES:

Zinc Plated Handle, 16" (406,4 mm), Order No. 241016
SST. Handle, 16" (406,4 mm), Order No. 241016-S

OPTIONS:

Seal Materials: Call for quotation.

INSTALLATION: Lubricate seals.

Use 1-1/4" Wrench. Torque to approximately 50 Foot Pounds.

6343 RIVER ROAD SE ■ CLEAR LAKE, MN 55319 USA
Telephone: 320-743-2276 ■ Fax: 320-743-3723
mailto:mailbox@doering.com ■ www.doering.com



DOERING