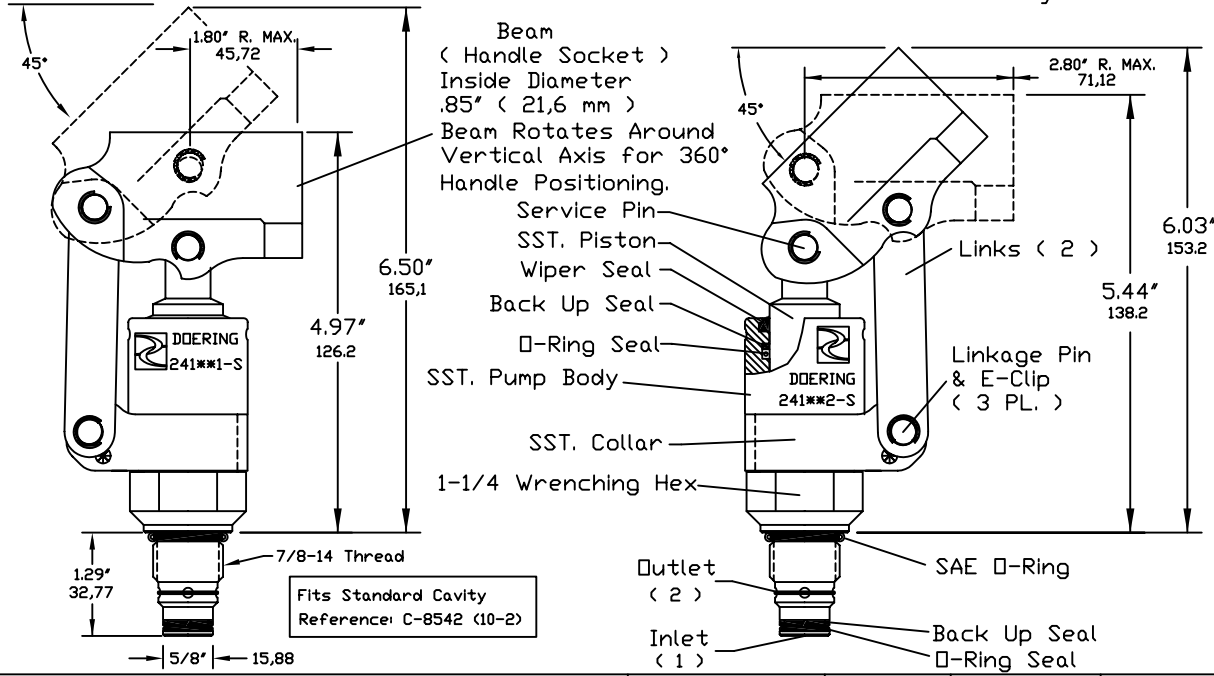


# 241-S SERIES CARTRIDGE PUMPS

Push Style Linkage:  
Push to Pressurize  
Pull to Fill Cylinder

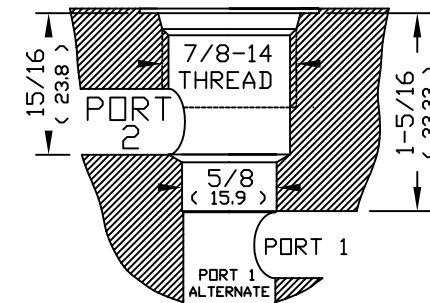
Pull Style Linkage:  
Pull to Pressurize  
Push to Fill Cylinder



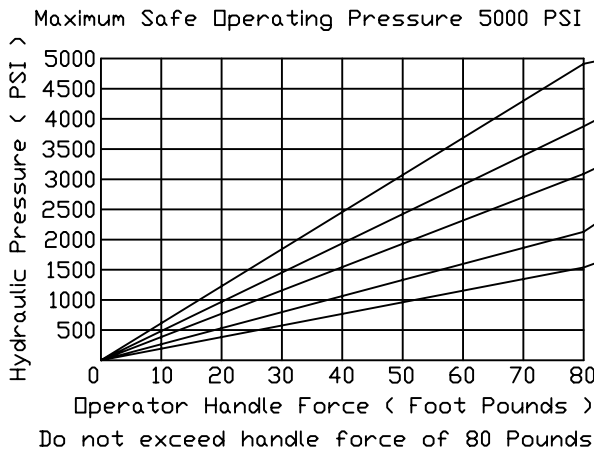
## FEATURES

All parts are Stainless Steel except Beam (Handle Socket) is Electroless Nickel plated Steel.  
 Operates in any position.  
 Rated to 5000 PSI back pressure at port 1.  
 Ability to generate PSIG determined by piston size.  
 See SELECTION GRAPH.

## CAVITY



## PUMP SELECTION GRAPH



DISPLACEMENT, FULL STROKE, Cubic Inches	DISPLACEMENT, FULL STROKE, Cubic Centimeters	PUSH STYLE ORDER NO.	PULL STYLE ORDER NO.	HOUSING BODY NO.
.196	3,2cc	241501-S	241502-S	S8542
.249	4,0cc	241561-S	241562-S	S8542-2
.307	5,0cc	241621-S	241622-S	S8542-5
.442	7,2cc	241751-S	241752-S	S8542-6
.601	9,8cc	241871-S	241872-S	S8542-8

For Stainless Steel add Letter S to end of part number.

**ACCESSORIES:**  
 Zinc Plated Handle, 16" (406,4 mm), Order No. 241016  
 SST. Handle, 16" (406,4 mm), Order No. 241016-S

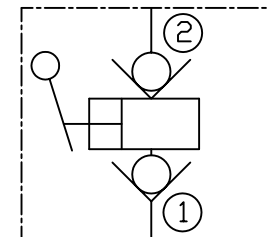
**OPTIONS:**  
 Seal Materials: Call for quotation.

**INSTALLATION:** Lubricate seals.  
 Use 1-1/4" Wrench. Torque to approximately 50 Foot Pounds.

Reference Cavity Drawing: C-8542  
 Industry Standard Cavity 10-2  
 Reference Form Tool: FT-8542

## 241-S SERIES

Functional Symbol:



6343 RIVER ROAD SE ■ CLEAR LAKE, MN 55319 USA  
 Telephone: 320-743-2276 ■ Fax: 320-743-3723  
 mailbox@doering.com ■ www.doering.com



DOERING