

Key 1: Illustrates Valve in housing cavity 1, Doering Cavity C-8502 (8-2).
 Key 2: Illustrates Valve in housing cavity 2, Doering Cavity C-8542 (10-2).
 If another manufacturers cavity drawing or tooling is used, verify dimensions based on the Doering Company Cavity specifications for C-8502 or C-8542.
 Key 3: S2833-## Housing

Valves shown mounted in housing for illustration purposes only.
 Valves ordered separately.

Please contact an application engineer for assistance in valve selection or to discuss other housing options or applications.

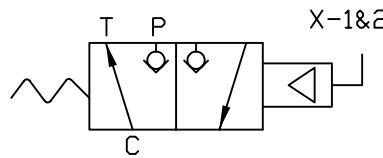
Functional Symbols, information:

Uses one simultaneous signal to shift function.

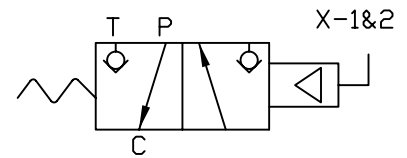
Pilot Ports = X

N/C = Normally Closed

N/O = Normally Open



Use N/C in 1, N/O in 2.



Use N/O in 1, N/C in 2.

Housing Catalog Numbers:

Valves ordered separately.

Aluminum Housing		STAINLESS HOUSING	
3000 PSIG Rated		5000 PSIG Rated	
CAT. NO.	PORTING	CAT. NO.	PORTING
S2833-1	1/8 NPT	S2833-3S	1/8 NPT
S2833-2	1/4 NPT	S2833-2S	1/4 NPT
S2833-3	3/8 NPT	S2833-3S	3/8 NPT
S2833-4	SAE4	S2833-4S	SAE4
S2833-6	SAE6	S2833-6S	SAE6

Features and Precautions:

Provides 3 Way Poppet function using a N/C and N/O 2-Way Poppet valve. Valves may be installed to provide 3-Way N/C or N/O function. Ports should be used as designated. Flow directions are indicated by arrows on functional symbols. The S2833 Series features two different valve cavities. They are Industry 8-2 and 10-2 Standards. This provides protection from installing a valve in the wrong cavity.

S2833 Series Housings