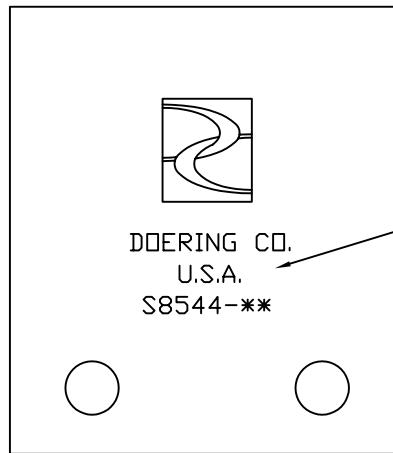
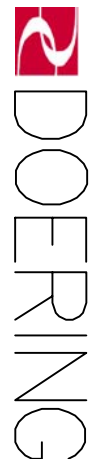
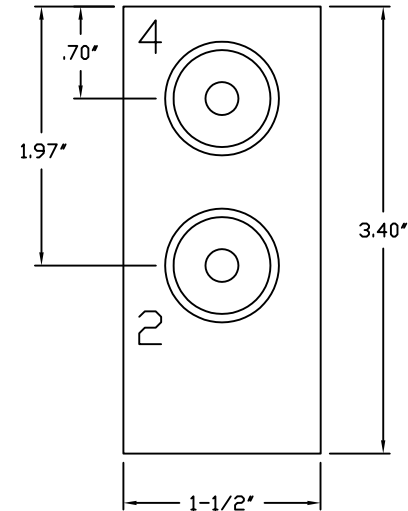
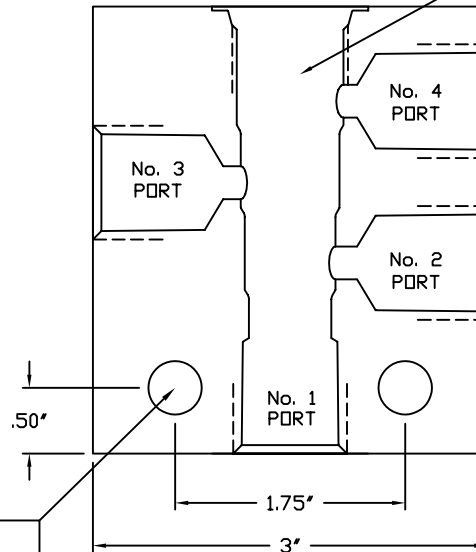
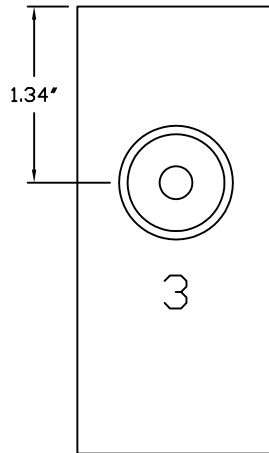


6343 RIVER ROAD SE ■ CLEAR LAKE, MN 55319 USA
 Telephone: 320-743-2276 ■ Fax: 320-743-3723
 mailbox@doering.com ■ www.doering.com



Identification
 Front and Back Views

Valve Cavity
 C-8544 (10-4 Industry)



Ø13/32 (2 PL.)
 Clearance for 3/8" or M10
 Mounting Holes

Aluminum Housing
 3000 PSIG Rated
CAT. NO. PORTING
 S8544-5 1/2 NPT
 S8544-8 SAE8

STAINLESS HOUSING
 5000 PSIG Rated, Note:
CAT. NO. PORTING
 S8544-5S 1/2 NPT
 S8544-8S SAE8

Porting Options refer to Ports 1, 2, 3 and 4.
 Valve Cavity is Doering C-8544 (10-4 Industry)

Notes:
 Housing & Typical Valve Flows will not equal 1/2" Porting.
 Housing Ports 2, 3 and 4 have 1/4" Dia. orifice.
 Pressure rating applies to Housing ONLY!