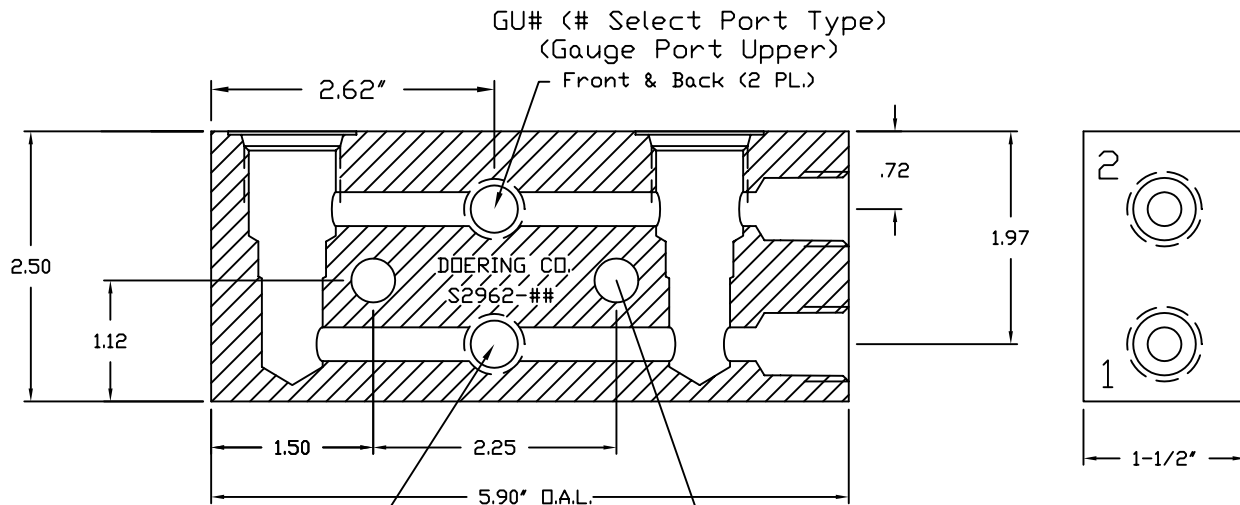


Pump or Valve
 Cavity 'A'
 Doering C-8542
 Industry 10-2

Pump or Valve
 Cavity 'B'
 Doering C-8542
 Industry 10-2



Mounting Holes (2 PL.)
 Clearance for 3/8" or M10
 $\phi 13/32$ ($\phi .406$)

ORDER INFORMATION:

S2962 -

Gauge Port Options:

- Blank No Gauge Ports
- GL# Gauge Lower
- GU# Gauge Upper

Select Gauge Poting:

- 1 (1/8 NPT)
- 2 (1/4 NPT)
- 4 (SAE4, ORB)

Ports 1 & 2

- 1 (1/8 NPT)
- 2 (1/4 NPT)
- 3 (3/8 NPT)
- 4 (SAE4, ORB)
- 6 (SAE6, ORB)

Material Option, Pressure Rating

- Pressure Note: Double pressure rating for Port 1 only.
- | | | |
|-------|-----------------|------------|
| Blank | (6061 Aluminum) | 3,000 PSIG |
| S | (304 Stainless) | 5,000 PSIG |
| S316 | (316 Stainless) | 5,000 PSIG |