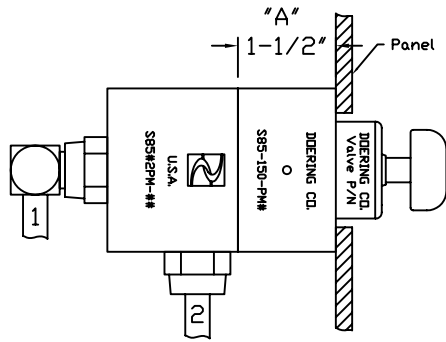
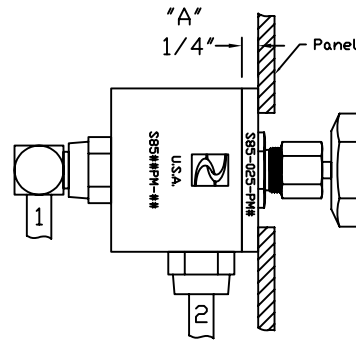


Example of Doering Panel Mount Housing, Spacer and Valve Assemblies.  
See additional Spec. Sheets for information on Housings and Valves.



Example using:  
S85#2PM-## Housing, Panel Mount  
S85-150-PM# Spacer, Panel Mount, 1.50"  
Doering Manually Operated Valve

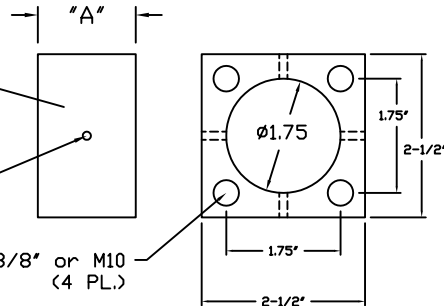


Example using:  
S85#2PM-## Housing, Panel Mount  
S85-025-PM# Spacer, Panel Mount, 0.25"  
Doering Needle Valve

S85-###-PM#  
Panel Mount Spacer

Vent Holes (4 PL.)  
1-1/2" (150) Model

Clearance for 3/8" or M10  
(4 PL.)



Application:

Application of S85-###-PM#  
Panel Mount Spacers are  
used along with Panel Mount  
Housings to achieve desired  
protrusion of the valve operator.  
Use of Panel Mount Spacer  
is optional.

Order Information, Spacer Only!

S85-###-PM# Spacer, Panel Mount

Blank = Aluminum  
S = Stainless Steel

025 = .25" "A" Value  
100 = 1.00" "A" Value  
150 = 1.50" "A" Value

Doering SPM Series  
Doering Panel Mount Spacer

6343 RIVER ROAD SE ■ CLEAR LAKE, MN 55319 USA  
Telephone: 320-743-2276 ■ Fax: 320-743-3723  
mailto:mailbox@doering.com ■ www.doering.com

