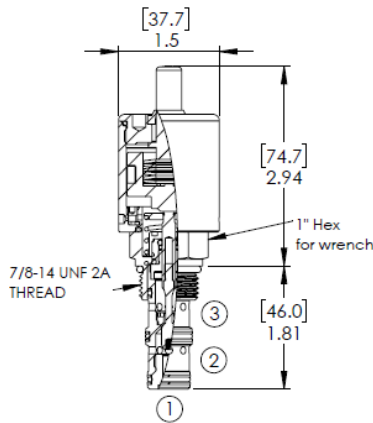
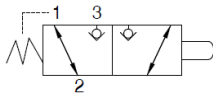


103 Manual Directional Control Valve

Functional Symbol



Description:

The Doering 103 Manual Directional Control Valve is a 2-position, 3-way, poppet-style hydraulic cartridge valve designed for load holding and manual circuit control applications. The valve features push-to-shift operation using a manual knob or direct plunger actuation, providing positive tactile feedback and reliable mechanical control without external power.

The poppet construction offers tight load holding, minimal leakage, and excellent resistance to contamination. The valve installs into an industry-standard C10-3 cavity, allowing easy integration into existing manifolds.

Operation:

The valve flow path is normally port 1 to port 2, port 3 is blocked. When the operator pushes the manual knob or plunger the valve mechanically shifts the internal poppet to the actuated position, changing the flow path to port 2 to port 3, port 1 is blocked.

Upon release of the knob, the spring automatically returns the valve to its normal position. This momentary operation makes the valve well suited for load release, manual override, and safety-related control functions where automatic return is required. Direct actuation provides fast response, positive feel, and predictable actuation force that increases proportionally with system pressure.

Features:

- Push-to-shift, spring return manual operation
- Direct plunger or knob for positive mechanical control
- Compact size for minimal space requirements.
- Industry-standard C10-3 cavity
- Poppet-style construction for tight load holding and low leakage
- 2-position, 3-way configuration
- Suitable for mobile and industrial hydraulic systems

Seal Replacement Kits, External:	
SRK-8543N	Buna-N
SRK-8543V	Fluorocarbon (Viton)
Note: Alternate materials available, contact Doering.	

Ratings:

Nominal Rated Flow: 5 GPM (19 lpm)

Operating Pressure: 3,000 PSI (207 bar)

Operating Temperature: -31 to 250°F (-35 to 121°C)

Leak Rate: Less than 5 drops per minute

Actuation force: Approx. 10-15 lbf at zero pressure. Force increases proportionally with system pressure.

Approx. Weight: .5 lbs. (0.23 kg)

Ordering Information:

103H K 227 MP D						
Model	Seat	Size	Style	Actuator	Seal Material	Material/Coating
103H	K Soft Seat	227 1-1/2" Body	MP Manual w/Overtravel	D Direct Plunger	Blank Buna-N	Blank Aluminum/Stainless Steel
			MO Manual no Overtravel	K Aluminum Knob	V Viton	SS Stainless Steel
				S Stainless Steel Knob	R EPDM	SS316 316 SST
				R Red Anodized Aluminum		