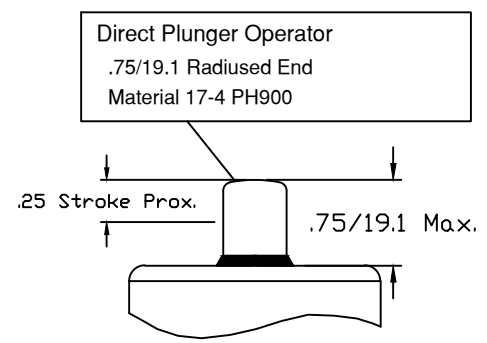
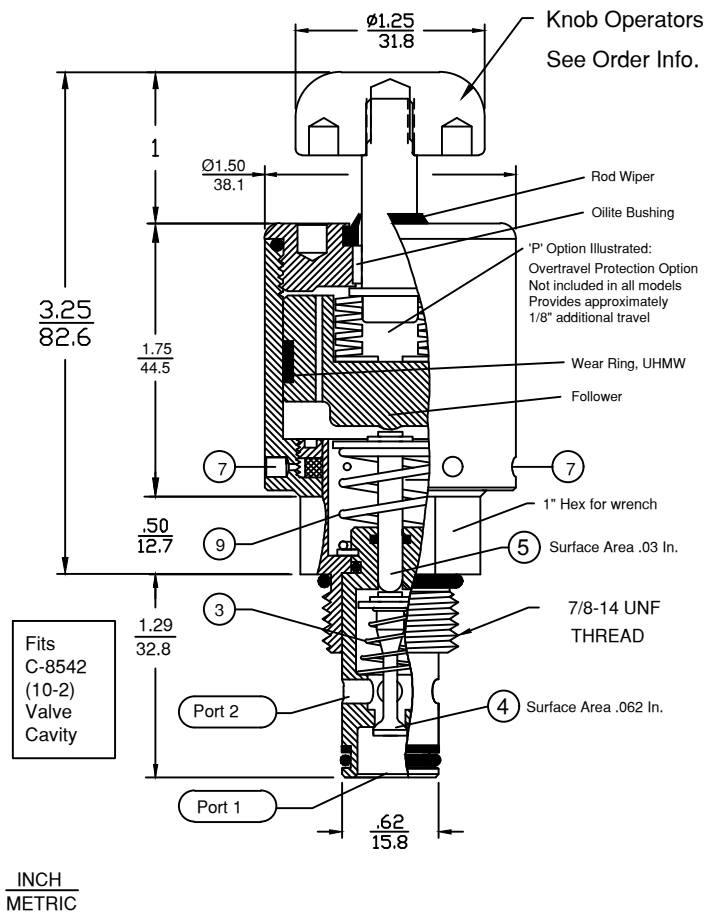




CARTRIDGE VALVE



SPECIFICATIONS:

Normally Closed Check Valve
 Manual Override to hold Open.
 Maximum pressure at Ports 1 and 2 is 5,000 PSI.
 Install Cartridge valve using 1" wrench
 Final tightening to 20 foot pounds torque.
 Use lubricant on external oil seals and mounting threads.
 Fluid temperature -45°F (-42.7°C) to 200°F (93.3°C)

MATERIALS & OPTIONS

T Option 10-32 vent ports at Key 7 (2 Places)
 Seat (Key 4) material is heat treated Stainless.
 Seal Materials used are Buna-N and Teflon.
 Optional seal and construction materials available.

SHIFT FORCE NOTES:

15 Pounds of Force is required to compress springs, Key 3 & 9

To determine the additional operating force imposed by the system pressure, multiply the system pressure X .062 and add the result to the 15 Pound spring force.

Example: 1,000 PSI System
 1,000 X .062 = 62#
 62 + 15 = 77#
 Total Operator Force = 77#

Cavity & Housing

Cavity C-8542 (10-2):
 See Spec. Sheet 1200621

Line Mount Housings:
 See Spec. Sheets
 1200674 and 1201455

Panel Mount Housings:
 See Spec. Sheets
 1202982 and 1202990

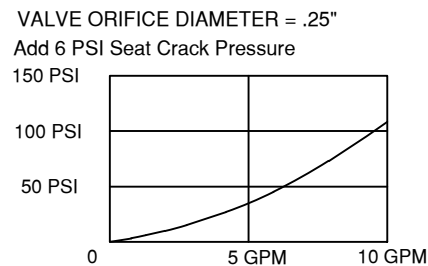
INCH
 METRIC

Valve Number: **94H92M##06**

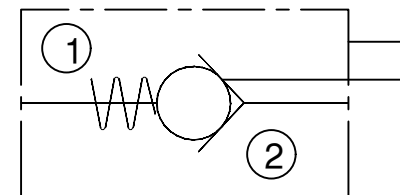
O = No Overtravel Protection
 P = Overtravel Protection

Operators:
 D = Direct Plunger
 K = Knob, Aluminum
 R = Knob, Red Ano.
 S = Knob, Stainless

PRESSURE DROP CHART $C_V = 0.9$



POC SERIES



Check Valve with Manual Override to hold open.