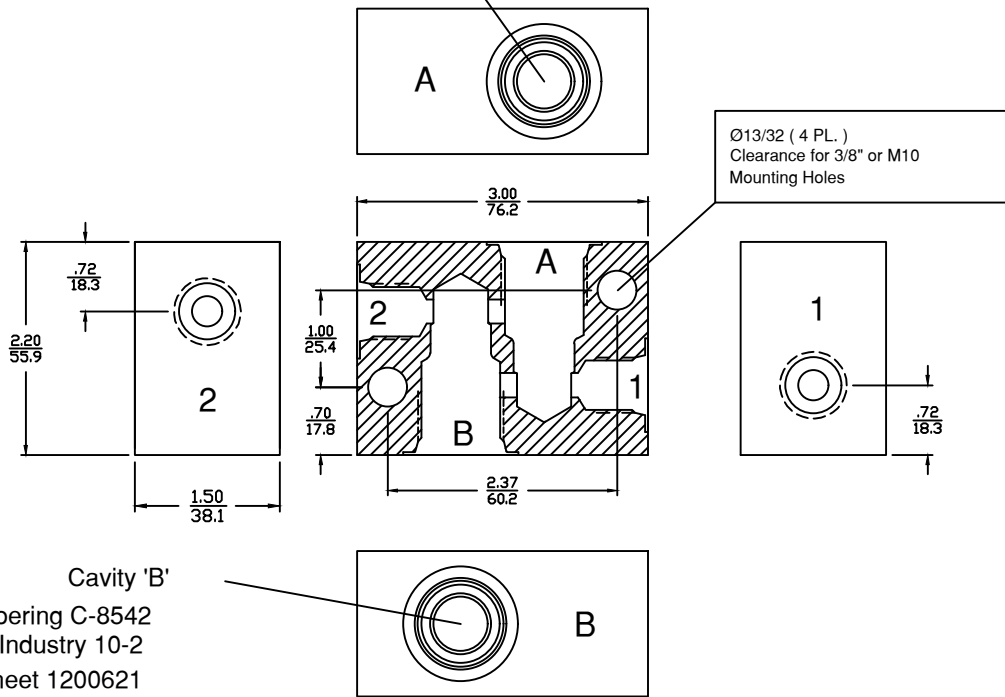


6343 RIVER ROAD SE ■ CLEAR LAKE, MN 55319 USA  
 Telephone: 320-743-2276 ■ Fax: 320-743-3723  
 mailbox@doering.com ■ www.doering.com

INCH  
 METRIC

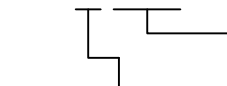
Cavity 'A'  
 Doering C-8542  
 Industry 10-2  
 Spec. Sheet 1200621



Cavity 'B'  
 Doering C-8542  
 Industry 10-2  
 Spec. Sheet 1200621

S1552 Series Housing  
 Order Information:

S1552-



Ports 1 & 2

- 1 (1/8 NPT)
- 2 (1/4 NPT)
- 3 (3/8 NPT)
- 4 (SAE4, ORB)
- 6 (SAE6, ORB)

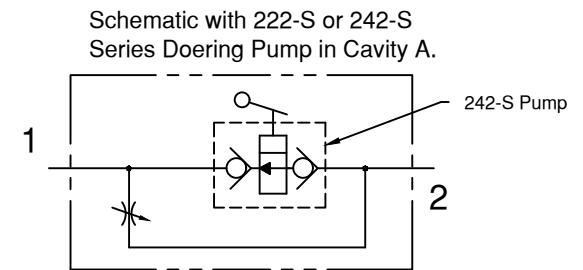
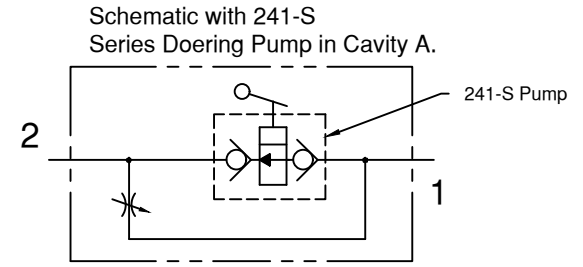
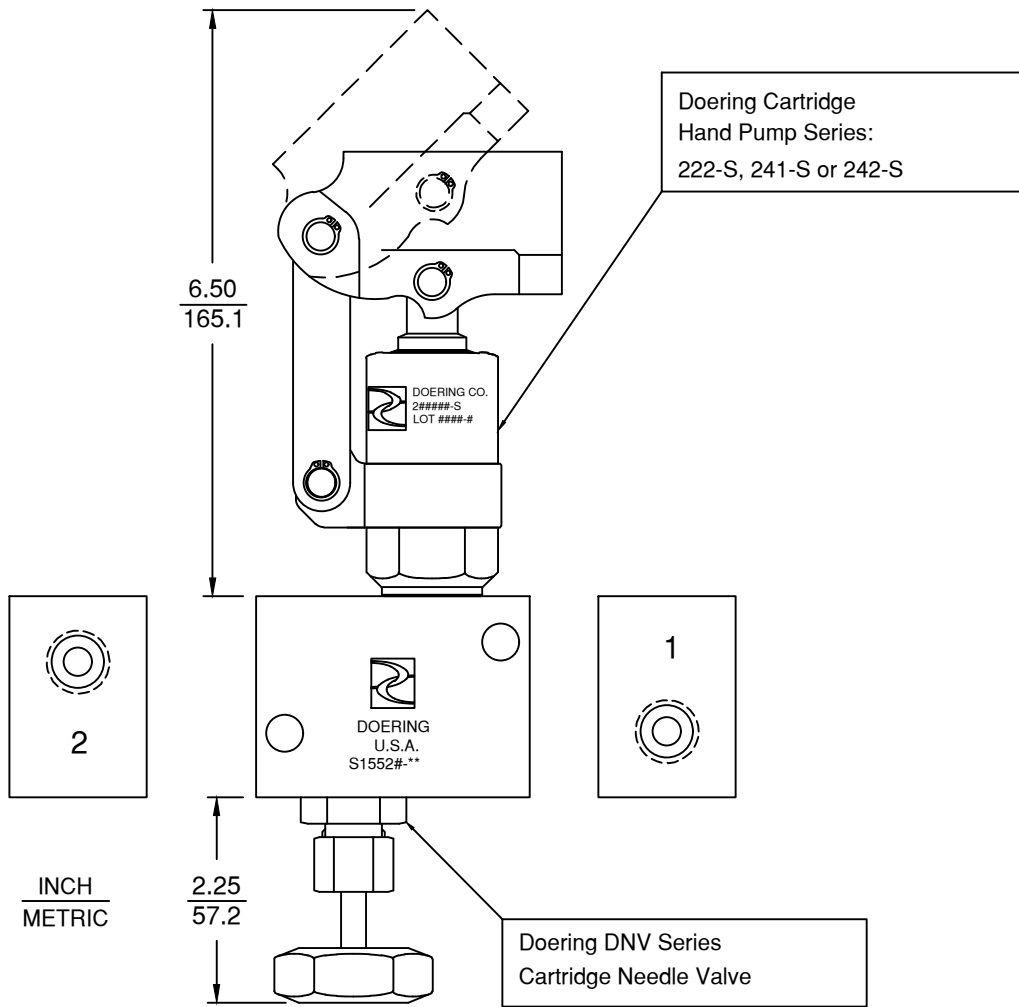
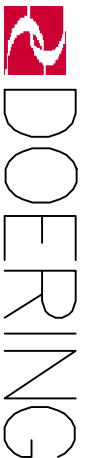
Material Option, Working Pressure  
 Proof Pressure 2X Working PSIG.

Blank	(6061 Aluminum)	3,000 PSIG
S	(304 Stainless)	5,000 PSIG
S316	(316 Stainless)	5,000 PSIG

App Pages Follow  
 Order Housing and Valves Separately



6343 RIVER ROAD SE ■ CLEAR LAKE, MN 55319 USA  
 Telephone: 320-743-2276 ■ Fax: 320-743-3723  
 mailbox@doering.com ■ www.doering.com



Assembly may be orientated in any position.

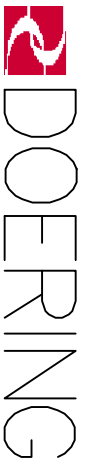
Example Assembly:

Order Components Separately.

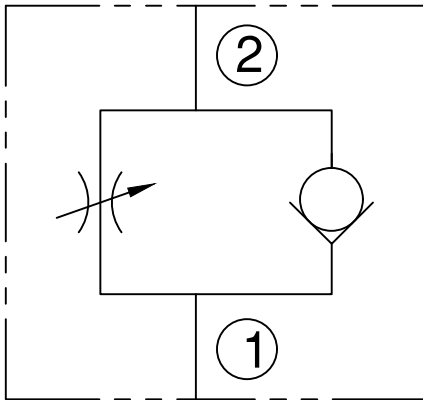
- S1552#-## Doering Housing. See Page 1 for Part Number Detail.
- 222###-S Doering Cartridge Pump, Ref. Spec. Sheet 222##
- 241###-S Doering Cartridge Pump, Ref. Spec. Sheet 241##
- 242###-S Doering Cartridge Pump, Ref. Spec. Sheet 242##
- DNV-K-10-#-###-### Doering Needle Valve, Spec Sheet 1201273

S1552 Series Housing  
 Illustrated with  
 Doering Cartridge Pump  
 and Needle Valve

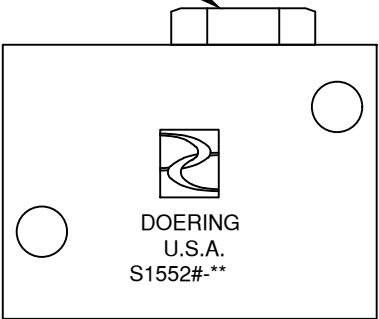
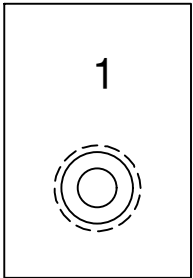
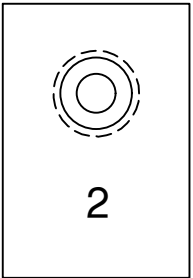
6343 RIVER ROAD SE ■ CLEAR LAKE, MN 55319 USA  
Telephone: 320-743-2276 ■ Fax: 320-743-3723  
mailbox@doering.com ■ www.doering.com



Graphic Symbol:  
Flow Control and Check Valve  
Spec. Sheets 1201273, 1201552, 1202025, 1202937  
Order Housing and Valves Separately.



Doering DCV Series  
Cartridge Check Valve



2.25  
57.2

INCH  
METRIC

Doering DNV Series  
Cartridge Needle Valve

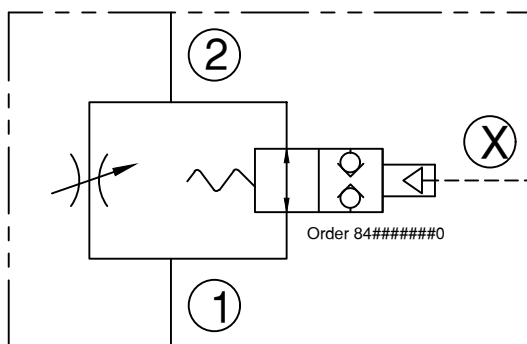
Assembly may be orientated in any position.

6343 RIVER ROAD SE ■ CLEAR LAKE, MN 55319 USA  
 Telephone: 320-743-2276 ■ Fax: 320-743-3723  
 mailbox@doering.com ■ www.doering.com

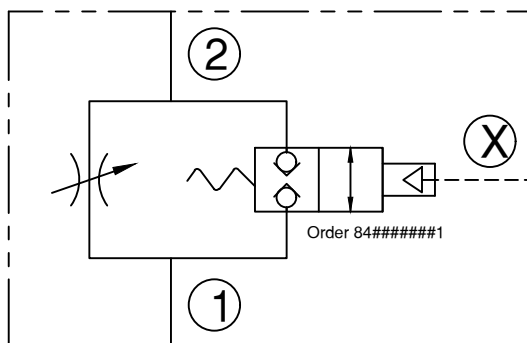


DOERING

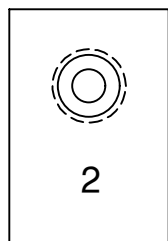
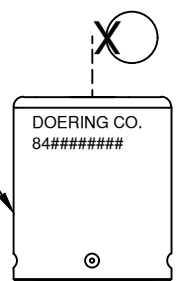
Graphic Symbol:  
 Flow Control and Normally Open Pilot to Close Valve  
 Spec. Sheets 1200755, 1201076, 1201273, 1201317, 1201552  
 Order Housing and Valves Separately.



Graphic Symbol:  
 Flow Control and Normally Closed Pilot to Open Valve  
 Spec. Sheets 1200754, 1201280, 1201273, 1201424, 1201552  
 Order Housing and Valves Separately.



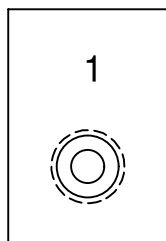
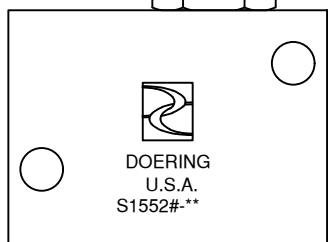
Doering 2PB Series  
 Pilot Cartridge Valve  
 Order 84#####0  
 or 84#####1



2

INCH  
 METRIC

2.25  
 57.2

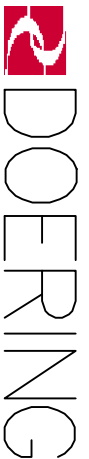


1

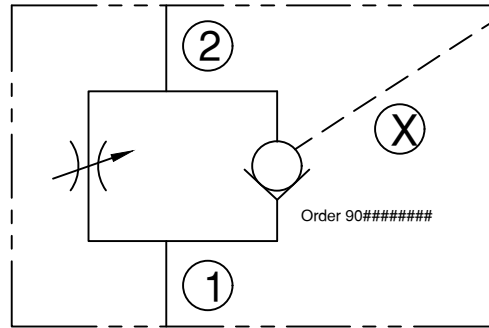
Doering DNV Series  
 Cartridge Needle Valve

Assembly may be orientated in any position.

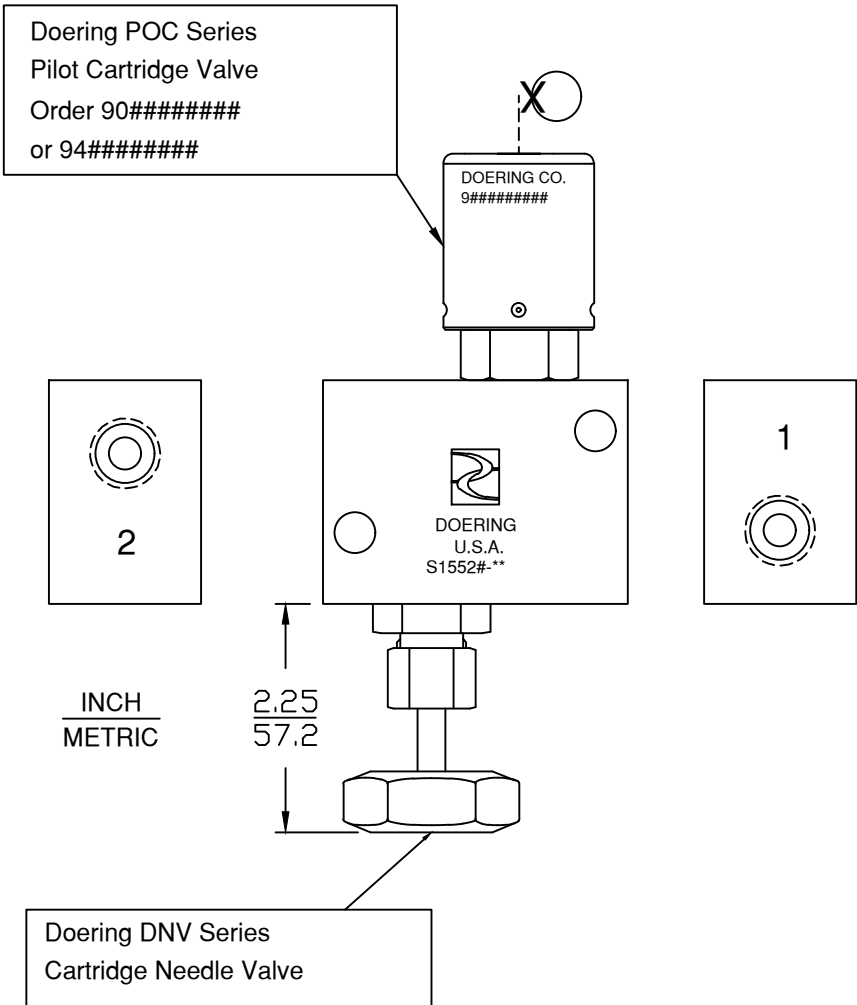
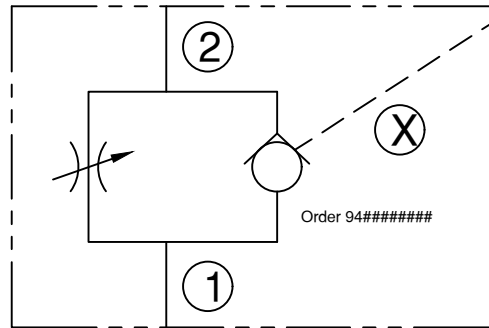
6343 RIVER ROAD SE ■ CLEAR LAKE, MN 55319 USA  
 Telephone: 320-743-2276 ■ Fax: 320-743-3723  
 mailbox@doering.com ■ www.doering.com



Graphic Symbol:  
 Flow Control and Pilot to hold Closed Check Valve (POC).  
 Spec. Sheets 1201273, 1201552 and more under POC.  
 Order Housing and Valves Separately.



Graphic Symbol:  
 Flow Control and Pilot to hold Open Check Valve (POC).  
 Spec. Sheets 1201273, 1201552 and more under POC.  
 Order Housing and Valves Separately.

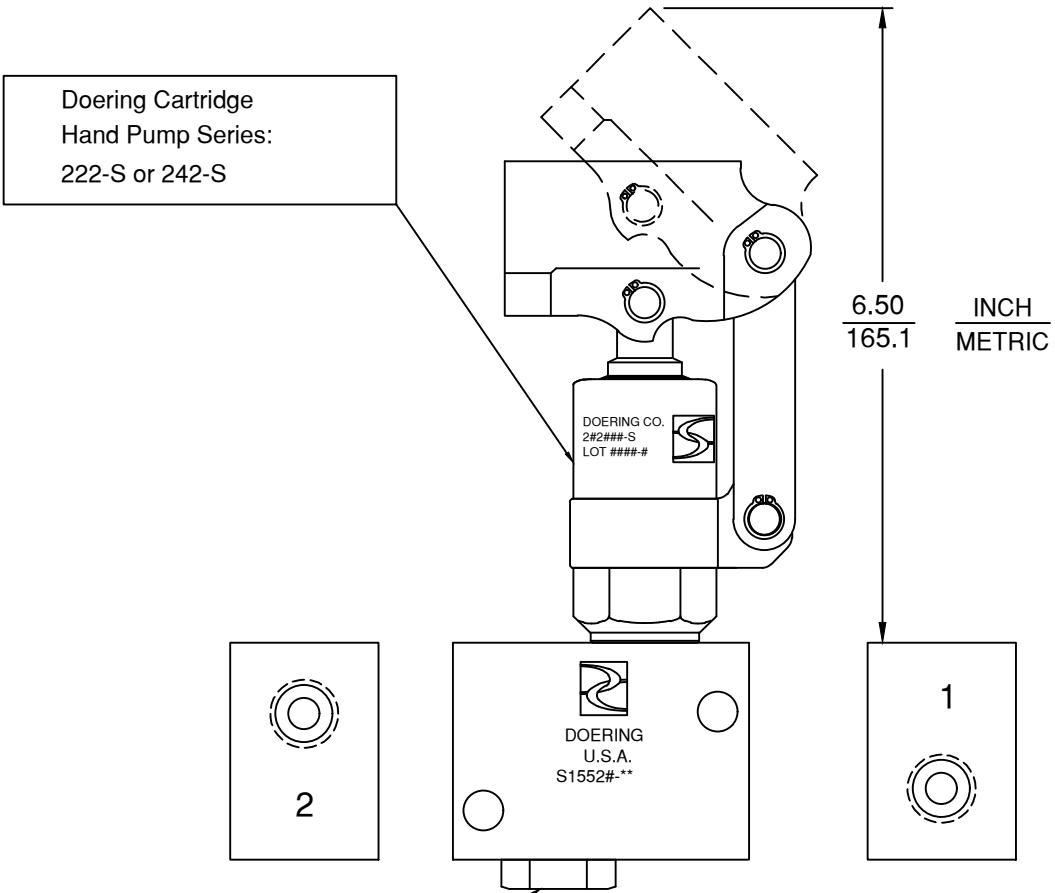


Assembly may be orientated in any position.

6343 RIVER ROAD SE ■ CLEAR LAKE, MN 55319 USA  
 Telephone: 320-743-2276 ■ Fax: 320-743-3723  
 mailbox@doering.com ■ www.doering.com



DOERING



Schematic with 222-S or 242-S Series Doering Pump in Cavity A. and DCV Series Check Valve in Cavity B.

