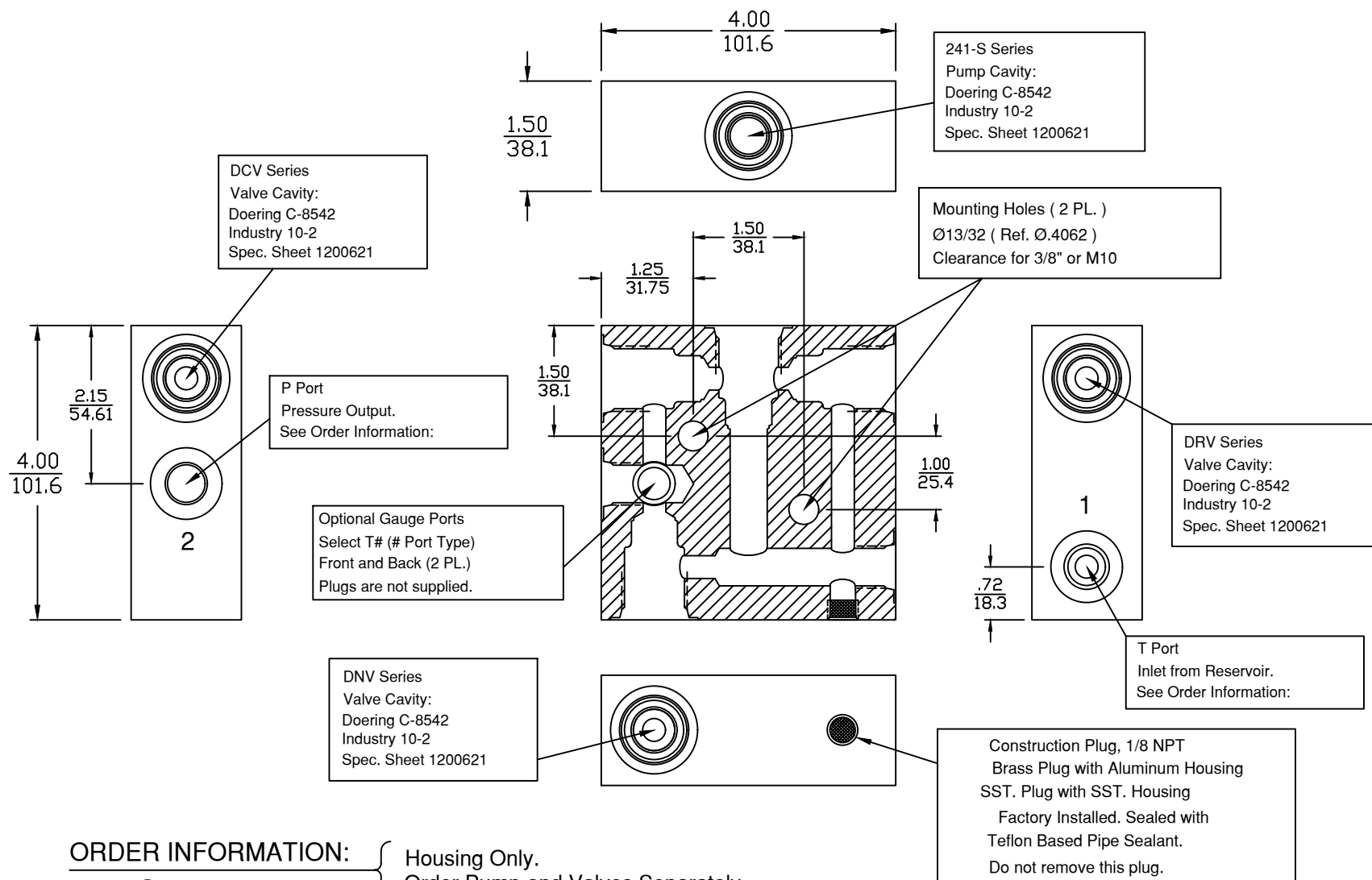


6343 RIVER ROAD SE ■ CLEAR LAKE, MN 55319 USA  
 Telephone: 320-743-2276 ■ Fax: 320-743-3723  
 mailbox@doering.com ■ www.doering.com



**ORDER INFORMATION:**

S1554 -

Housing Only.  
 Order Pump and Valves Separately.

Gauge Port Options  
 Front and Back ( 2 PL. )

Select Gauge Porting:

Blank No Gauge Ports  
 T1 (1/8 NPT)  
 T2 (1/4 NPT)  
 T4 (SAE4, ORB)  
 TG4 (G 1/4-19 BSPP)

Ports 1 & 2

1 (1/8 NPT)  
 2 (1/4 NPT)  
 3 (3/8 NPT)  
 4 (SAE4, ORB)  
 G4 (G 1/4-19 BSPP)  
 6 (SAE6, ORB)  
 G6 (G 3/8-19 BSPP)

Material Option, Pressure Rating

Blank (6061 Aluminum) 3,000 PSIG  
 S (304 Stainless) 5,000 PSIG  
 S316 (316 Stainless) 5,000 PSIG

**S1554 Series Housing  
 Designed for use with  
 241-S Series Doering  
 Cartridge Hand Pump  
 (Pumps 1 to 2)**

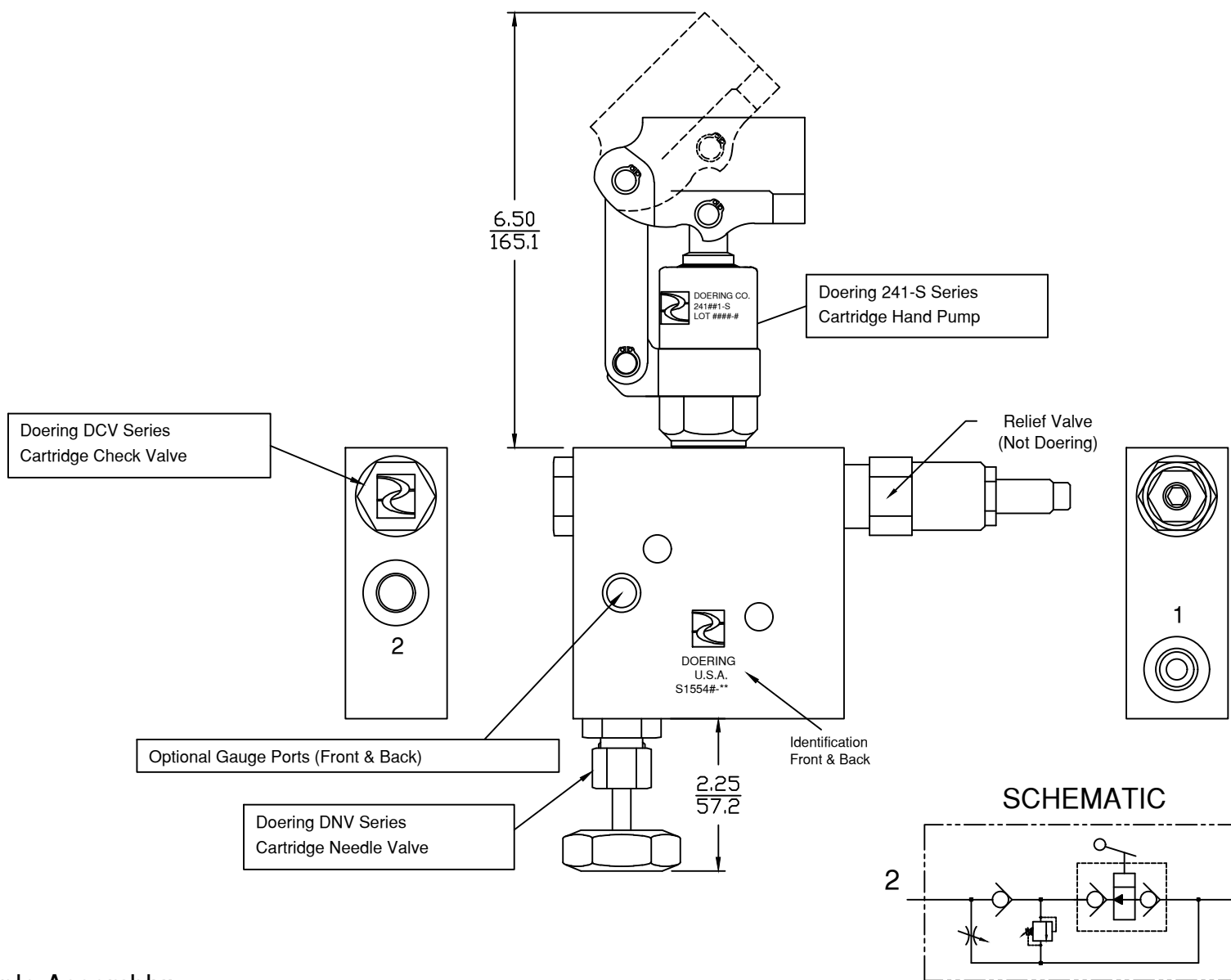


DOERING

6343 RIVER ROAD SE ■ CLEAR LAKE, MN 55319 USA  
 Telephone: 320-743-2276 ■ Fax: 320-743-3723  
 mailbox@doering.com ■ www.doering.com



DOERING



**Example Assembly:  
 Order Components Separately.**

- S1554#-## Doering Housing
- 241###-S Doering Cartridge Pump, Ref. Spec. Sheet 241##
- DCV-#-10-#-### Doering Check Valve, Spec. Sheet 1202025
- DNV-K-10-#-### Doering Needle Valve, Spec Sheet 1201273
- Relief Valve, Not Available through Doering Company at this time.
- Relief Valve must relieve Back to T Port. See Flow path on Page 1.
- Gauge, Not Available through Doering at this time.

**S1554 Series Housing  
 Illustrated with  
 241 Series Pump, Check Valve,  
 Needle Valve & Relief Valve**