

6343 RIVER ROAD SE ■ CLEAR LAKE, MN 55319 USA
 Telephone: 320-743-2276 ■ Fax: 320-743-3723
 mailbox@doering.com ■ www.doering.com

Cavity & Housing

Cavity & Tooling C-8543 (10-3):
 See Spec. Sheet 1200634

Line Mount Housings:
 See Spec. Sheet 1200673 & 1201903

Panel Mount Housings & Spacers:
 See Spec. Sheets
 1202983 and 1202990

Cavity, Tooling & Housing Info
 found at www.doering.com
 Cavities, Housings & Manifolds.

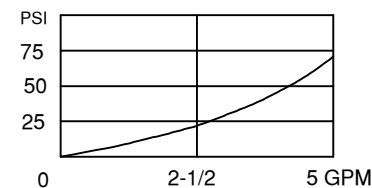
Doering Company also manufactures
 multi function and multi station
 Housings & Manifolds.

Please call for assistance.

SPECIFICATIONS:

Air Pilot Operated Hydraulic Spool Valve.
 Three Way, Directional Control or Selector Valve.
 Maximum System Pressure:
 Ports 1, 2, and 3 rated to 3,000 PSI.
 Maximum Pilot Pressure (X port) 150 PSI.
 Fluid temperature -40°F (-40°C) to 200°F (93.3°C)
 Install Cartridge valve using 1" wrench
 Valve should screw in freely to the Mount Seal.
 Final tightening to 20 foot pounds torque.
 Use lubricant on external oil seals and mounting
 threads.

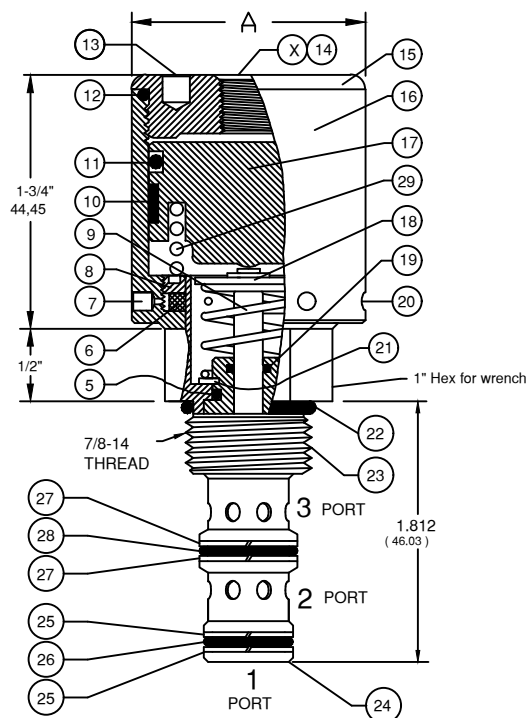
PRESSURE DROP CHART



3PS SERIES

3 Way Spool Valve, Pilot Operated.
 Directional Control or Selector Valve.

CARTRIDGE VALVE



KEY EXPLANATION:

5. Teflon Seal
6. Filter, 10 Micron, Sintered Bronze
7. Spanner Hole & Vent to Atmosphere
8. Filter Retainer
9. Stainless Steel Spring
10. Piston Guide Ring, UHMW Machined
11. O-Ring, Buna-N
12. O-Ring, Buna-N
13. Bonnet Face Spanner Holes (2)
14. Pilot Port, 1/8 NPT
15. Bonnet
16. Actuator Cylinder
17. Actuator Piston
18. Spring Retaining System
19. Teflon Seal
20. Spanner Hole & Vent to Atmosphere
21. Retaining Ring, Spool Cage Assembly
22. O-Ring, Buna-N
24. Spool Cage, Heat Treated Stainless, Honed
25. Teflon Back Up Ring (2)
26. O-Ring, Buna-N
27. Teflon Back Up Ring (2)
28. O-Ring, Buna-N
29. Booster Spring on 54H6-- & 54H7-- Models only.

OPTIONS

Pilot Port (Key X) is 1/8 NPT.
 Optional Pilot Porting includes 1/4 NPT, SAE4, and SAE6.
 Standard seals are Buna-N with Teflon back up rings.
 Optional seals include Viton, Teflon and others.

Keys 7 & 20 are vents to atmosphere.
 T Option provides 10-32 Threaded ports at these
 locations.

PILOT RATIO NOTES:

- TO CALCULATE THE CORRECT PILOT RATIO VALVE
 TO ORDER FOLLOW THESE STEPS:
1. Determine the MAXIMUM possible system pressure.
 Multiply X 1.1 = SYSTEM
 2. Determine MINIMUM possible pilot pressure.
 Multiply X .9 = PILOT
 3. Divide SYSTEM by PILOT = PILOT TO SYSTEM RATIO
 4. Round up to standard available ratio.

Pilot to System
 Ratio applies to
 Port 1 only.

" A "
 Diameter

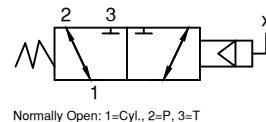
Cartridge Valve
 Order Number

Functional Symbol
 Suggested Connections

108:1
 131:1
 183:1
 277:1

1-1/2 (38.1)
 1-5/8 (41.28)
 1-7/8 (47.63)
 2-1/4 (57.15)

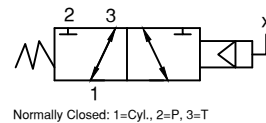
54H2371080
 54H3371310
 54H6371830
 54H7372770



108:1
 131:1
 183:1
 277:1

1-1/2 (38.1)
 1-5/8 (41.28)
 1-7/8 (47.63)
 2-1/4 (57.15)

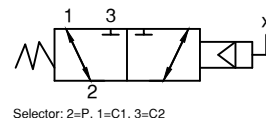
54H2371081
 54H3371311
 54H6371831
 54H7372771



108:1
 131:1
 183:1
 277:1

1-1/2 (38.1)
 1-5/8 (41.28)
 1-7/8 (47.63)
 2-1/4 (57.15)

54H2371085
 54H3371315
 54H6371835
 54H7372775



DOERING