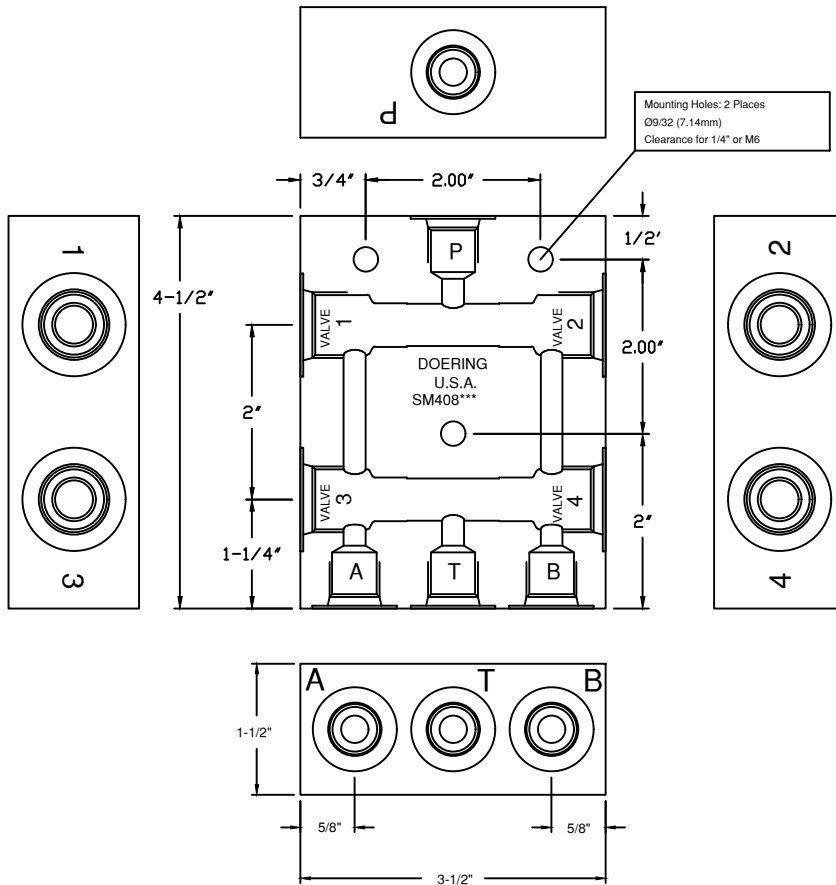
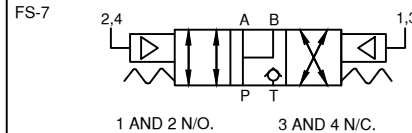
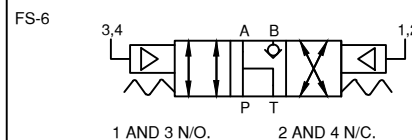
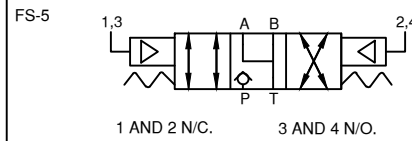
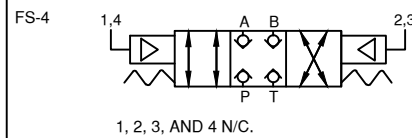
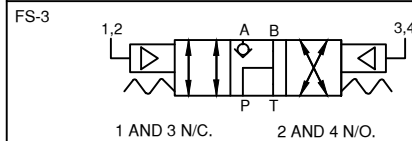
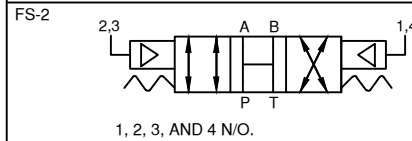
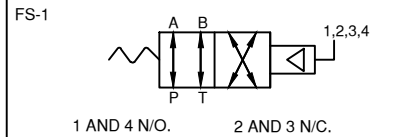


4 WAY POPPET FUNCTIONS USING FOUR, 2 WAY POPPET VALVES



CONTROL OPTIONS (FUNCTIONAL SYMBOLS) VALVE POSITIONS AND TYPES USED.

N/C = NORMALLY CLOSED
 N/O = NORMALLY OPEN
 Proper Valve Selection and Assembly
 is required to achieve functionality
 corresponding Functional Symbol (FS)
 required for the application.
 FS-# (Select Functional Symbol)



ORDER INFORMATION:

SM408-

Housing Only. Order 4 Cartridge
 Valves Separately, based on
 Functional Symbol (FS-#).

Ports A,B,P,T

- 1 (1/8 NPT)
- 2 (1/4 NPT)
- 3 (3/8 NPT)
- 4 (SAE4, ORB)
- G4 (G 1/4-19 BSPP)
- 6 (SAE6, ORB)
- G6 (G 3/8-19 BSPP)

Material Option, Pressure Rating

- | | | |
|-------|-----------------|------------|
| Blank | (6061 Aluminum) | 3,000 PSIG |
| S | (304 Stainless) | 5,000 PSIG |
| S316 | (316 Stainless) | 5,000 PSIG |

PILOT VALVE SELECTION:

In making valve ratio selection,
 note Valves 1 and 2 are effected
 by inlet pressure (P).
 Valves 3 and 4 may see full
 pressure on the side port and
 only Tank return line pressure
 on the bottom port.
 Valves 3 and 4 may be lower ratio.

Note the 2" Ctr. to Ctr. distance.
 This is allowance for Actuator
 (A) diameters of the valve pilots.

See Spec. Sheets 2PB N/C
 and 2PB N/O for Valve Ordering
 information. Valves must be double
 blocking (bi-directional).

The SM408*** Housings Require
 Valves to fit C-8502 (8-2) Cavities.
 Reference Cavity Drawing 1200630