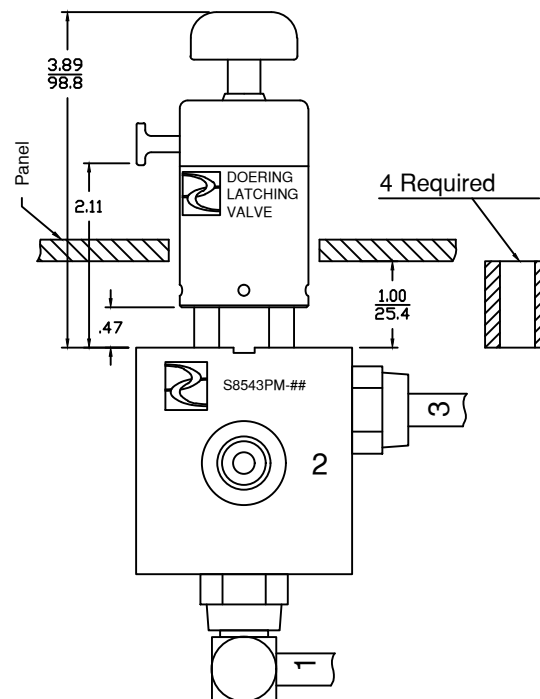


6343 RIVER ROAD SE ■ CLEAR LAKE, MN 55319 USA
 Telephone: 320-743-2276 ■ Fax: 320-743-3723
 mailbox@doering.com ■ www.doering.com



DOERING

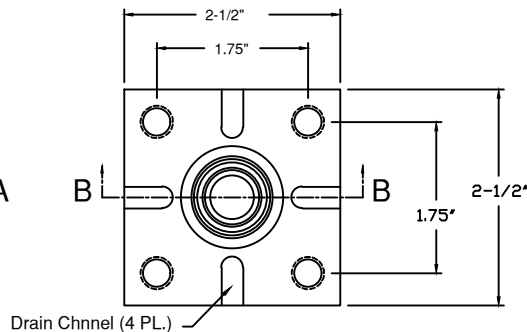
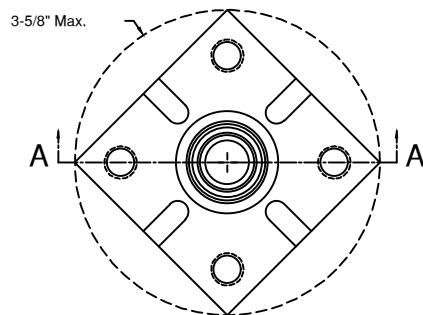
Illustration Assembly scaled with optional 1" Stand Off Spacers between Panel Mount Housing and back side of panel face material.



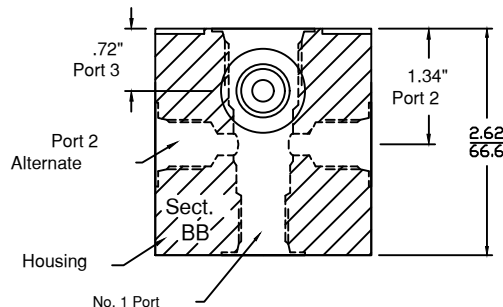
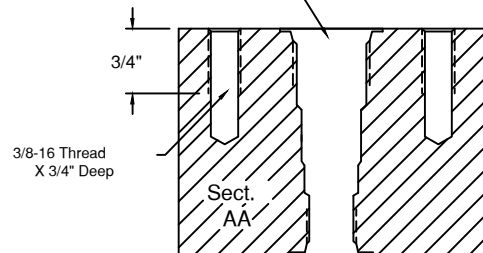
Panel Mount housings may be mounted directly to the site panel, or Doering SO- Series Stand Off Spacers may be used to improve access to the valve wrench hex area or to control the protrusion of the valve from the panel face. Please see Doering SO- Series Stand Off Spacers on Spec. Sheet 1203290.

Doering SPM Series

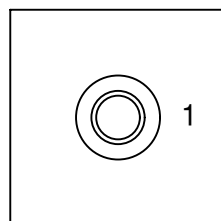
Doering Panel Mount Housing



Doering Valve Cavity, C-8543 (10-3)



INCH
METRIC



ORDER INFORMATION:

S8543PM-

Ports 1, 2, 3 & 4

- 1 (1/8 NPT)
- 2 (1/4 NPT)
- 3 (3/8 NPT)
- 4 (SAE4, ORB)
- G4 (G 1/4-19 BSPP)
- 6 (SAE6, ORB)
- G6 (G 3/8-19 BSPP)

Material Option, Pressure Rating

Blank	(6061 Aluminum)	3,000 PSIG
S	(304 Stainless)	5,000 PSIG
S316	(316 Stainless)	5,000 PSIG

Note: Port 2 Alternate Plug Not Supplied.