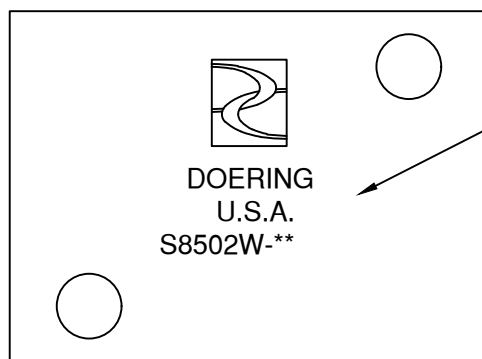
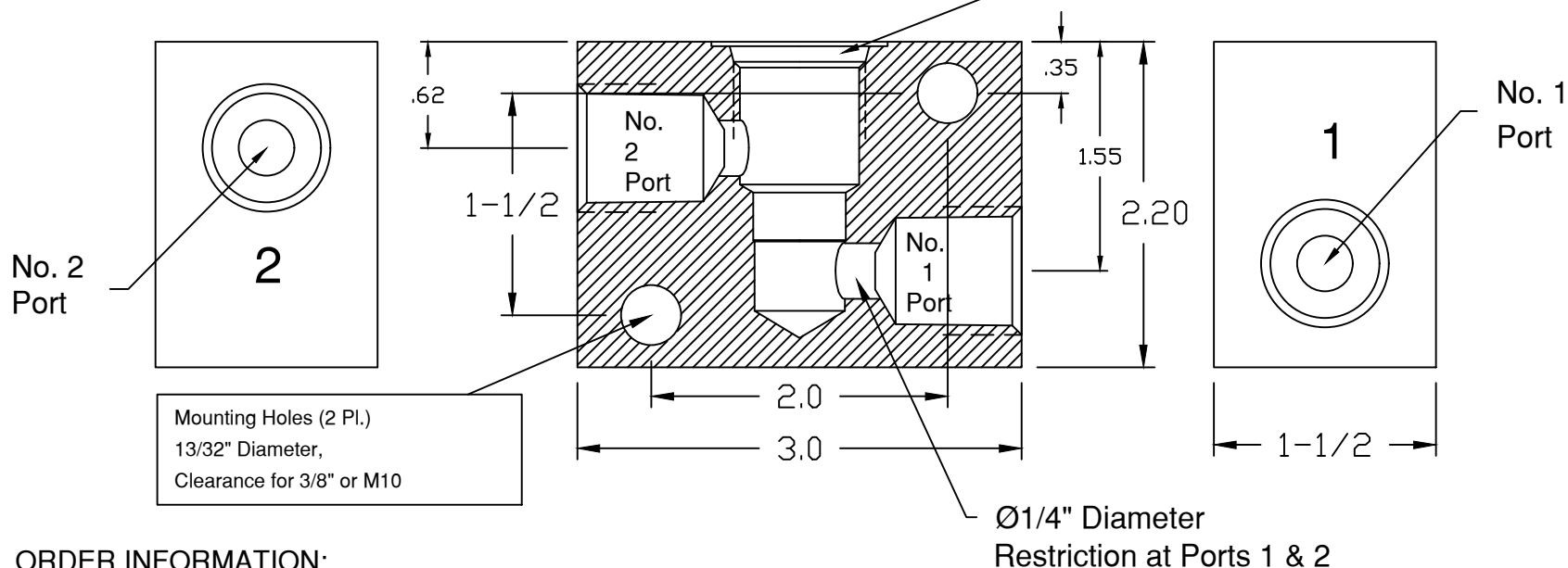


6343 RIVER ROAD SE ■ CLEAR LAKE, MN 55319 USA  
 Telephone: 320-743-2276 ■ Fax: 320-743-3723  
 mailbox@doering.com ■ www.doering.com



Identification  
Front & Back

Valve Cavity:  
Doering C-8502  
Industry 8-2



Mounting Holes (2 Pl.)  
13/32" Diameter,  
Clearance for 3/8" or M10

**ORDER INFORMATION:**

S8502W-

**Ports 1 & 2**

- 1 (1/8 NPT)
- 2 (1/4 NPT)
- 3 (3/8 NPT)
- 4 (SAE4, ORB)
- 5 (1/2 NPT)
- 6 (SAE6, ORB)
- 8 (SAE8, ORB)

**Material Option, Pressure Rating**

Pressure Note: Double pressure rating for Port 1 only.  
 Applies to Port Sizes -1, -2, -3, -4 and -6

Blank	(6061 Aluminum)	3,000 PSIG
S	(304 Stainless)	5,000 PSIG
S316	(316 Stainless)	5,000 PSIG

Doering Line Mount Housing for  
Cartridge Valve, Wide Body Style.

---

Also see Spec. Sheet No. 1200672  
for smaller Line Mount body style.

---

Also see Spec. Sheet No. 1202981  
for Panel Mount Housing.



DOERING

SPEC. SHEET NO. 1203123 REV. 02