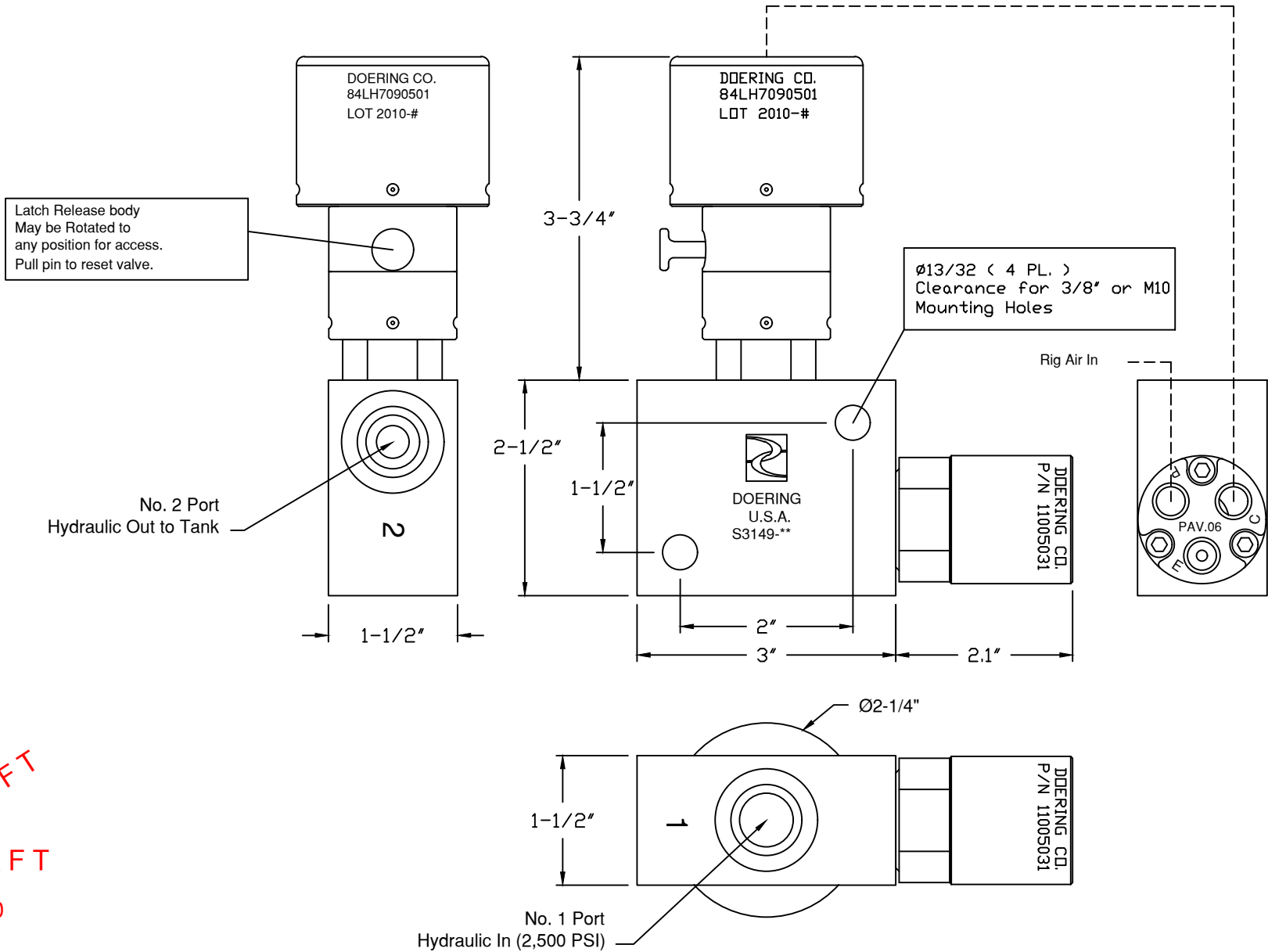
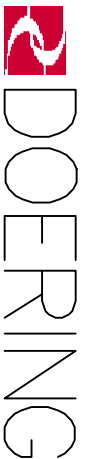


6343 RIVER ROAD SE ■ CLEAR LAKE, MN 55319 USA
 Telephone: 320-743-2276 ■ Fax: 320-743-3723
 mailbox@doering.com ■ www.doering.com



DRAFT
DRAFT
 1/19/10

1203154 Assembly

S3149-6 or S3149-6S Housing
 84LH7090501 Doering Cartridge Valve, Latching
 11005031 Doering PAV Sequence Valve