

## SPECIFICATIONS:

Pilot Operated poppet valve with Manual Override.  
Two way, normally closed, actuate to open..  
Maximum pressure 5,000 PSI, Ports 1 and 2.

See "SHIFT FORCE NOTES" regarding operating force required to open valve.  
Full Flow is achieved at .08" Stroke.  
Full Travel is at Prox. .16" Stroke.  
Do not travel to or past full stroke with positive force.

Use 1" wrench to install valve.  
Torque to 20 to 30 foot pounds.

Use lubricant on external oil seals and mounting threads.

Fluid temperature -45°F (-42.7°C) to 200°F (93.3°C)

## STANDARD OPTIONS

T Option 10-32 vent ports at Key 7 ( 2 Places )

Seat ( Key 4 ) is heat treated Stainless Steel.

Seal Materials used are Buna-N and Teflon.

Optional seal and construction materials available.

## SHIFT FORCE NOTES:

10 to 15 Pounds of Force is required to shift the valve poppet with zero pressure on ports 1 and 2.

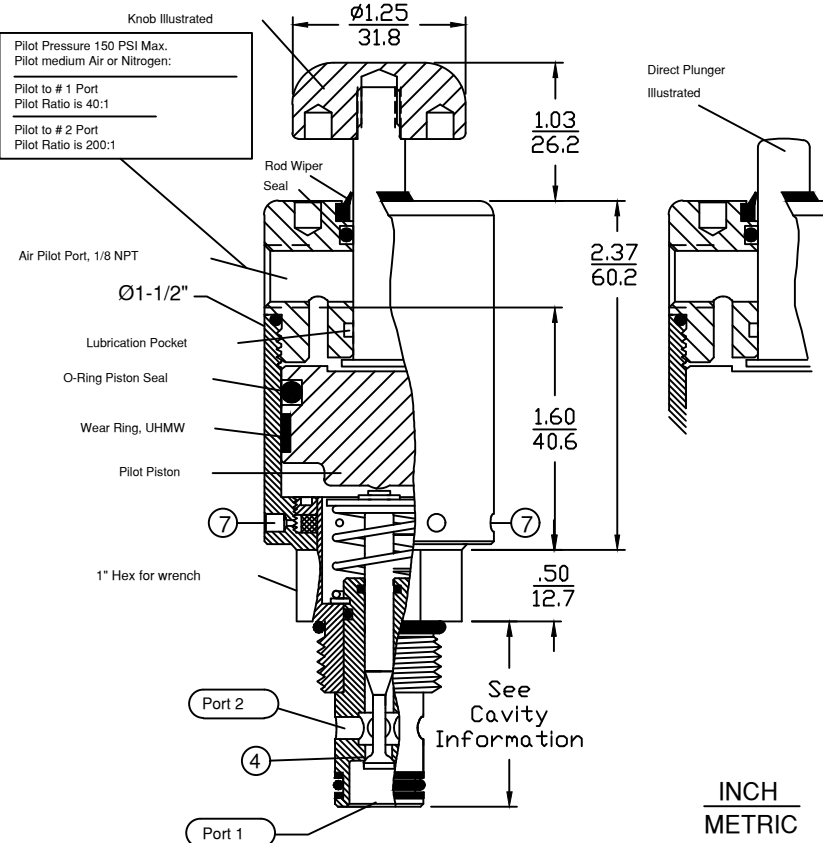
Any pressure on port 1 will increase Force requirement by .030 X PSI at No. 1 Port.

Any pressure on port 2 will increase Force requirement by .003 X PSI at No. 2 Port.

For total force requirement, add all 3 results.

Using port 2 as pressure inlet may reduce the force requirement to shift valve.

## CARTRIDGE VALVE



INCH  
METRIC

## Cavity & Housing

For 82H#227040MO#1 Valve:

Cavity Drawing:  
1200630 Spec. Sheet

Line Mount Housings:  
1200672 Spec. sheet

Panel Mount Housings:  
1202981 and 1203290  
Spec. Sheets

For 84H#227040MO#1 Valve:

Cavity Drawing:  
1200621 Spec. Sheet

Line Mount Housings:  
1200674 and 1201455  
Spec. Sheets

Panel Mount Housings:  
1202982 and 1203290  
Spec. Sheets

Valve Number: **8#H#227040MO#1**

2 = 3/4-16 Thread  
Cavity C-8502  
( 8-2 )

4 = 7/8-14 Thread  
Cavity C-8542  
( 10-2 )

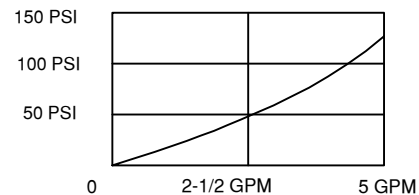
### HANDKNOB DESIGNATION:

D = No Knob Direct Plunger  
K = Non-Anodized Aluminum  
N = No Knob Threaded Stem  
R = Red Anodized Aluminum  
S = Stainless Steel

Blank = Standard Hard Seat  
K = Kel-F Soft Seat with  
Hard Seat backup. Ref. Key 4  
Reduces Flow C  $v = 0.3$  Prox.

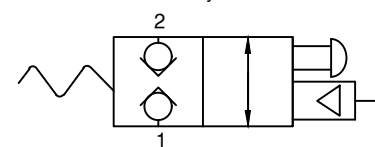
## PRESSURE DROP CHART $C_v = 0.4$

VALVE ORIFICE DIAMETER = .160"



## 2PB SERIES

Functional Symbol



**2PB N/C**

2 Way Poppet Valve, Pilot / Manual

6343 RIVER ROAD SE ■ CLEAR LAKE, MN 55319 USA  
Telephone: 320-743-2276 ■ Fax: 320-743-3723  
mailto:doering.com ■ www.doering.com



DOERING