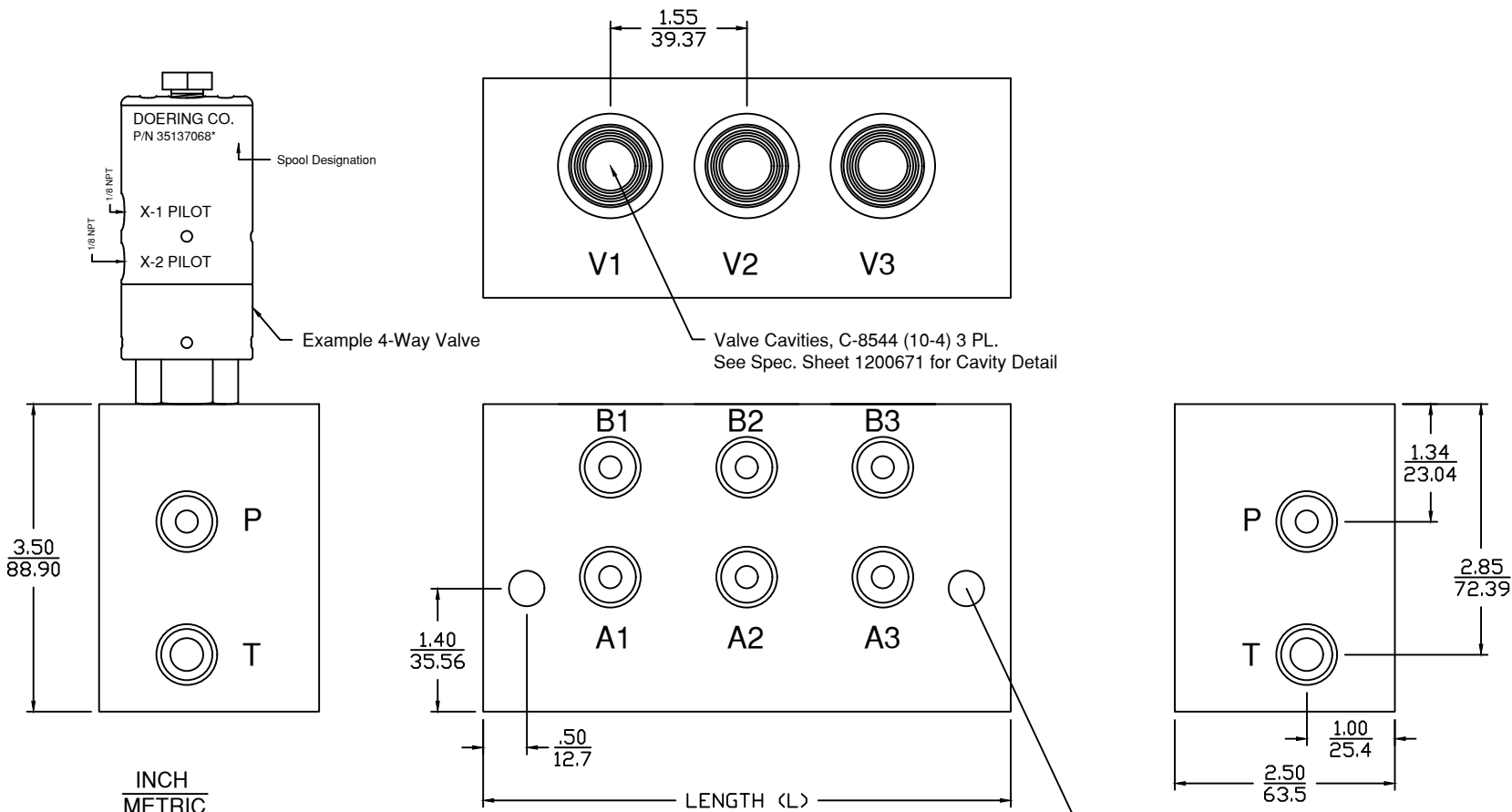


6343 RIVER ROAD SE ■ CLEAR LAKE, MN 55319 USA  
 Telephone: 320-743-2276 ■ Fax: 320-743-3723  
 mailbox@doering.com ■ www.doering.com



S3293-3-## (Three Station) Illustrated

Ø13/32 ( 2 PL. )  
 Clearance for 3/8" or M10  
 Mounting Holes

**Order Information:**

Order Cartridge Valves Separately (One Per Station Required)

Multi Station Housing: S3293-##-#

Stations	LENGTH (L) INCH/METRIC	P & T Ports	A & B Ports
2 (Two Station)	- 4.45/113.03	2 (1/4 NPT)	1 (1/8 NPT)
3 (Three Station)	- 6.00/152.4	3 (3/8 NPT)	2 (1/4 NPT)
4 (Four Station)	- 7.55/191.77	4 (SAE4, ORB)	3 (3/8 NPT)
5 (Five Station)	- 9.10/231.14	G4 (G 1/4-19 BSPP)	4 (SAE4, ORB)
6 (Six Station)	- 10.65/270.51	6 (SAE6, ORB)	4 (G 1/4-19 BSPP)
		G6 (G 3/8-19 BSPP)	6 (SAE6, ORB)
			G6 (G 3/8-19 BSPP)