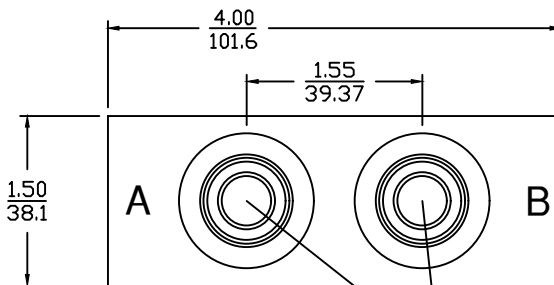
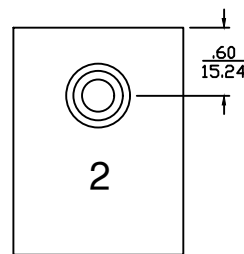
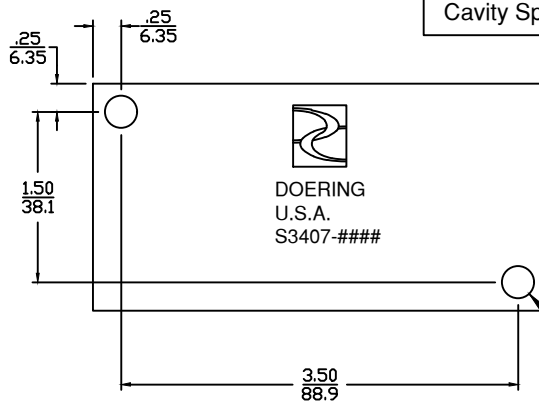
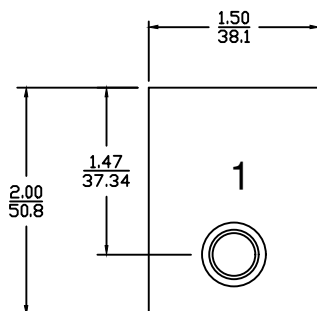


6343 RIVER ROAD SE ■ CLEAR LAKE, MN 55319 USA  
 Telephone: 320-743-2276 ■ Fax: 320-743-3723  
 mailbox@doering.com ■ www.doering.com



Valve Cavities (A & B)  
 Doering C-8502  
 Industry 8-2  
 Cavity Specs. 1200630

INCH  
 METRIC



Mounting Holes (2 Pl.)  
 9/32" Diameter,  
 Clearance for 1/4" or M6

### Order Information:

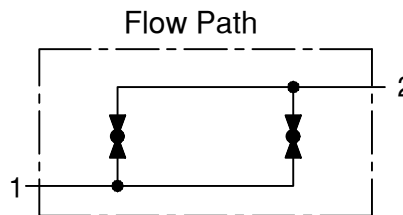
Order Cartridge Valves Separately (Two Valves Required)  
 Multi Station Housing: S3407-####

- Ports 1 and 2
- 2 (1/4 NPT)
  - 3 (3/8 NPT)
  - 4 (SAE4, ORB)
  - G4 (G 1/4-19 BSPP)
  - 6 (SAE6, ORB)
  - G6 (G 3/8-19 BSPP)

#### Material Option, Pressure Rating

Pressure Note: Double pressure rating for Port 1 only.

Blank	(6061 Aluminum)	3,000 PSIG
S	(304 Stainless)	5,000 PSIG
S316	(316 Stainless)	5,000 PSIG



DOERING