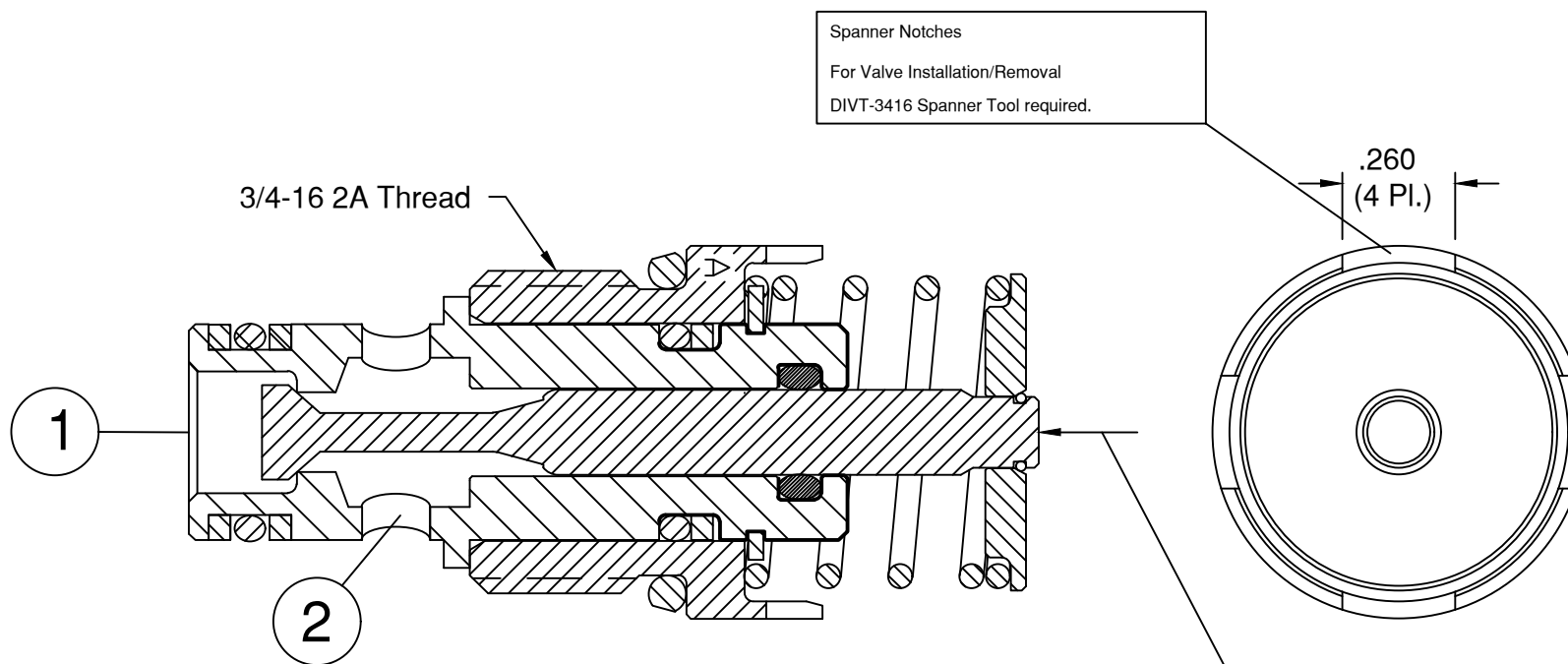


6343 RIVER ROAD SE ■ CLEAR LAKE, MN 55319 USA  
 Telephone: 320-743-2276 ■ Fax: 320-743-3723  
 mailbox@doering.com ■ www.doering.com



DOERING



Travel Notes:  
 .070" Minimum to full flow  
 .115" Recommended travel.  
 .160" To Solid. Will Damage Valve.

Stainless Steel Construction  
 Continuous Working Pressure 5,000 PSIG  
 Proof Pressure 7,500 PSIG  
 Fits Modified C-8502 (8-2) Valve Cavity

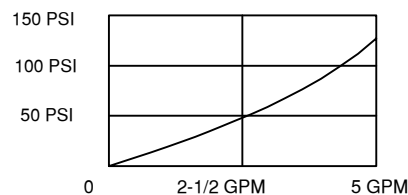
**Doering Insert Valve,**  
**Order: DIV-#-3416-#**

H = Hard Seat  
 K = Kel-F Soft Seat with  
 Hard Seat backup. Ref. Key 4  
 Reduces Flow C  $v = 0.3$  Prox.

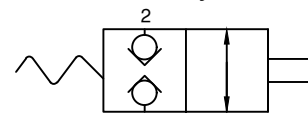
Back UP Rings Teflon/GF  
 Seal Materials  
 N = Buna-N  
 V = Viton  
 K75 = Kalrez 7075  
 R = EPR/EPDM

PRESSURE DROP CHART  $C_v = 0.4$   
 Hard Seat Only.

VALVE ORIFICE DIAMETER = .180"  
 Smaller Orifice with K Option Seat.



Functional Symbol



2 Way, Poppet,  
 Bidirectional,  
 Manually Operated