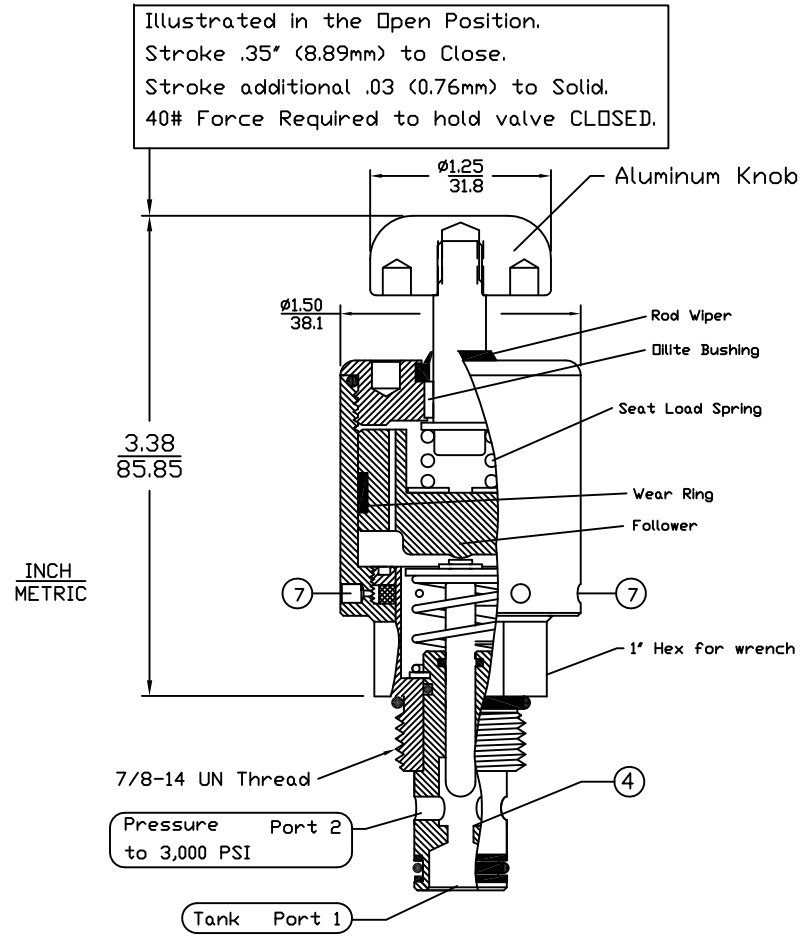


6343 RIVER ROAD SE ■ CLEAR LAKE, MN 55319 USA
 Telephone: 320-743-2276 ■ Fax: 320-743-3723
 mailbox@doering.com ■ www.doering.com



Cartridge Valve Order Number: 1203435

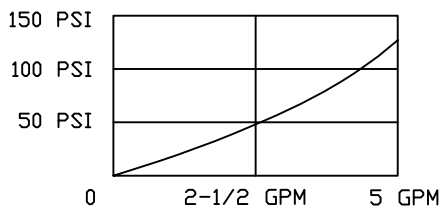
SPECIFICATIONS:

Manually Operated poppet valve.
 Two way, normally open, push operator to close.
 Maximum pressure 3,000 PSI
 This valve is designed to hold pressure on Port 2 only.
 Port 1 must drain back to tank.

Cavity, Housing & Installation

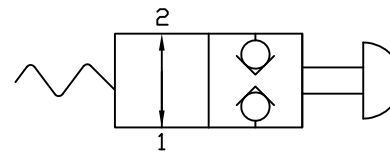
Cavity C-8542 (10-2), Spec. Sheet 1200621
 Use 1" wrench to install valve.
 Torque to 20 foot pounds.
 Use lubricant on external oil seals and mounting threads.

PRESSURE DROP CHART



2PB SERIES

Functional Symbol



2PB N/O

2 Way Poppet Valve, Manually Operated

SPEC. SHEET NO. 1203435 REV. 000

