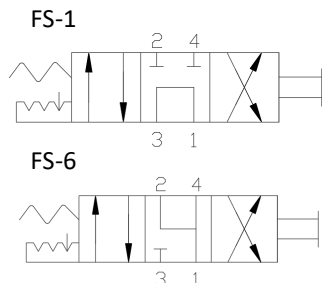


4-Way Manual Directional Control Hydraulic Cartridge Valve

Functional Symbol



Description:

The 4-Way, 3-Position Manual Detented Directional Control Cartridge valve is suited for all 4-way hydraulic circuit applications where manual operation is desired.

Operation:

All 3-position options require detent option.

Features:

- Several actuator options.
- Detented
- Compact size for minimal space requirements.
- Industry standard C10-4 cavity.

Ratings:

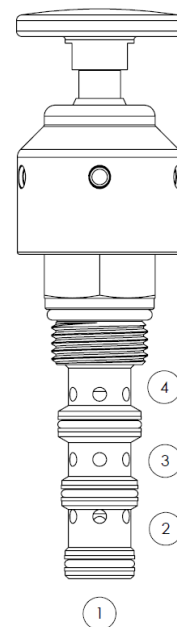
Nominal Rated Flow: 6 GPM (22.7 lpm)

Operating Pressure: 5,000 PSI (345 bar) all ports.

Operating Temperature: -31 to 250°F (-35 to 121°C)

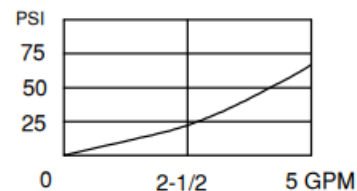
Leak Rate: Less than 82cc (5 in³) per minute

Approx. Weight: .5 lbs. (0.23 kg)



Seal Replacement Kits, External:	
SRK-10-4N	Buna-N
SRK-10-4V	Fluorocarbon (Viton)
Note: Alternate materials available, contact Doering.	

PRESSURE DROP / FLOW



Ordering Information:

34H237	MD	R	1	N	SS316
Model	Manual	Control	Spool Function	Seal Material	Material/Coating
34H237	MD Manual Detent 3-P	K Hand Knob	1 FS-1	N Buna-N	Blank Plated Steel
		R Hand Knob, Red	2 FS-2	V Viton	SS Stainless Steel
			4 FS-4	E EPDM	SS316 316 SST
			5 FS-5	W Low Temp Buna-N	
			6 FS-6		
			7 FS-7		