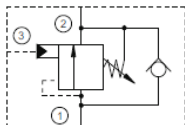


Counterbalance Valve, Restrictive, Hydraulic Cartridge

Functional Symbol



Description:

A screw-in, cartridge counterbalance valve with internal Check Valve. For use as a blocking or load-holding device in your Hydraulic system.

Operation:

The DCBB Counterbalance valve with pilot assist are meant to control an overrunning load. The check valve allows free flow from the directional valve (port 2) to the load (port 1) while a direct-acting, pilot-assisted relief valve controls flow from (port 1) to (port 2). Pilot assist at (port 3) lowers the effective setting of the relief valve at a rate determined by the pilot ratio. Other names for this valve include motion control valve and over-center valve.

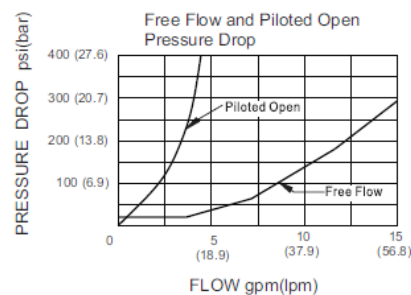
Features:

- The setting of the balance valve should be at least 1.3 times of the load pressure value.
- Backpressure at port 2 adds to the effective relief setting at a ratio of 1 plus the pilot ratio times the backpressure.
- Reseat exceeds 85% of set pressure when the valve is standard set. Settings lower than the standard set pressure may result in lower reseal percentages.
- Compact size for space requirement consideration.
- Cartridge design for ease of installation and maintenance.
- Cavity T-11A

Ratings:

Rated Flow: 5 GPM (20 LPM)
 Max. Inlet Pressure: 4,000 PSI (280 bar)
 Operating Temperature: -22° to 250°F (-30° to 120°C)
 Leak Rate: < 5 drops per minute
 Pilot Ratio: 3:1

Performance Curve Pressure Drop vs. Flow



Ordering Information:

DCBB T11A - 28

Model	Cavity	Adjustment Range
DCBB	T11 T-11A Cavity	28 2800 PSI

Additional pressures available by request