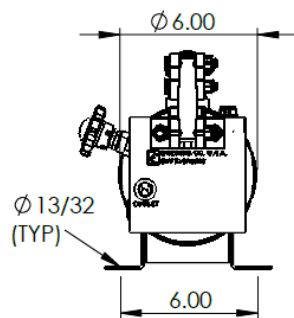
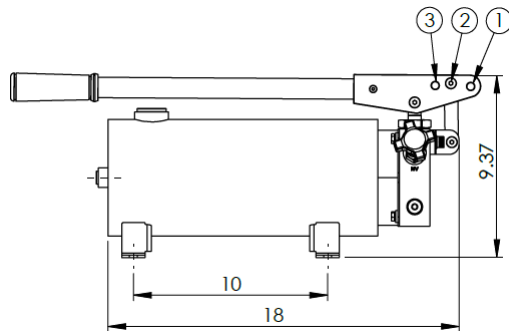
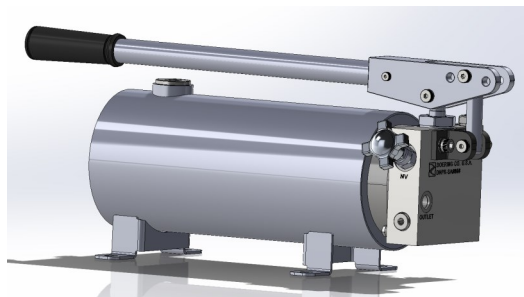
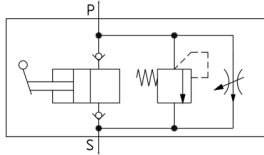


DHPR Hydraulic Hand Pump and Reservoir

Functional Symbol



Description:

The Doering Company DHPR Hydraulic Hand Pump with Integrated Reservoir is a manually operated hydraulic pressure pump designed to generate controlled pressure for hydraulic cylinders and similar devices. The integrated reservoir supplies hydraulic fluid directly to the pump, enabling precise, portable pressurization in applications where electric or pneumatic power is unavailable or impractical.

Operation:

Fill the reservoir with appropriate hydraulic fluid, connect to the hydraulic circuit, and operate the handle to generate pressure. Pump until the required pressure is reached. Release pressure safely with bypass knob before disconnecting.

Features:

- Integrated reservoir reduces external plumbing and improves portability
- Manual operation suitable for remote or off-grid locations
- Rugged construction for industrial, shop, and mobile environments
- Serviceable design with replaceable seals and wear components
- Multiple mounting options: Horizontal, vertical, or portable base
- Flow control fine metering via stroke control and release valve
- Built-in relief valve limits pressure to 3,000 PSI
- Three selectable volume and pressure settings:
 - Position 1: 1.25 cu.in. per stroke—1500 psi*
 - Position 2: .95 cu.in. per stroke—2000 psi*
 - Position 3: .60 cu.in. per stroke—3000 psi*

*Rated pressures achieved with an applied handle force of 60-65 lbs.

Ratings:

Reservoir Volume: 1.5 gallon

Maximum Operating Pressure: 3,000 PSI (207 bar).

Operating Temperature Range: -30 to 250°F (-40 to 149°C)

Leak Rate: Less than # drops per minute

Approx. Dry Weight: ## lbs. (## kg)

Compatible Fluids: Mineral-based hydraulic oil

Ordering Information:

DHPR - SA 69 N 15 30

Model	Action	Piston	Seal Material	Reservoir Size	Pressure PSI (bar)	Material/Coating
DHPR	SA Single Action	69 11/16"	N Buna-N V Viton R EPDM	15 1.5 Gallon	30 3000 (207)	Blank Aluminum, Painted & Plated Steel