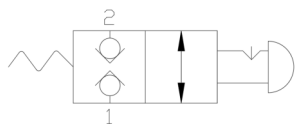


2-Way Manual Directional Control Hydraulic Cartridge Valve

Functional Symbol



Description:

The 2-Way, 2-Position Manual Detented Directional Control Cartridge valve is suited for all 2-way hydraulic circuit applications where manual operation is desired.

Operation:

Manual 2-position with or without detent option.

Features:

- Several actuator options.
- Compact size for minimal space requirements.
- Industry standard C10-2 cavity.
- Soft Seat Zero-Leak Option

Ratings:

Nominal Rated Flow: 5 GPM (18.9 lpm)

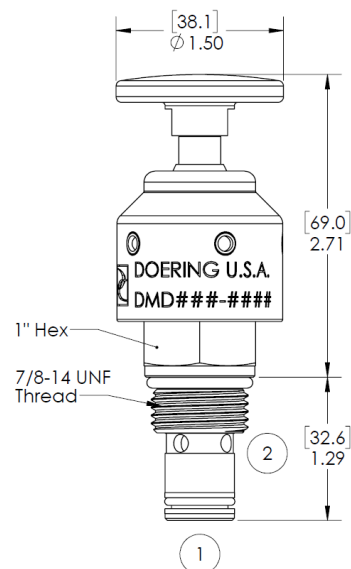
Operating Pressure: 5,000 PSI (345 bar) all ports.

Operating Temperature: -31 to 250°F (-35 to 121°C)

Leak Rate: Hard Seat <2 drops per minute

Soft Seat-Zero Leak

Approx. Weight: .5 lbs. (0.23 kg)



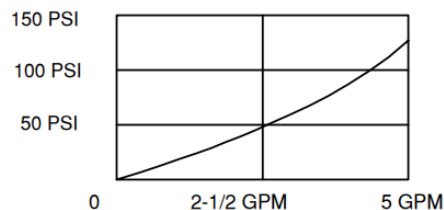
Seal Replacement Kits, External:	
SRK-8542N	Buna-N
SRK-8542V	Fluorocarbon (Viton)
Note: Alternate materials available, contact Doering.	

Flow & Pressure Drop.

Reduce Values 50% with K (Soft) Seat.

Hard Seat Effective Diameter .158"

Hard Seat estimated Cv 0.4



Ordering Information:

DMDC		10	2	H	K	N			
Model	Cavity	Seat Option		Control		Seal Material		Material/Coating	
DMDC	10 2	H	Hard Seat	K	Hand Knob	N	Buna-N	Blank	Plated Steel
		K	Soft Seat	R	Hand Knob, Red	V	Viton	SS	Stainless Steel
				S	Hand Knob, SST	E	EPDM	SS316	316 SST
				S316	Hand Knob, 316 SST	W	Low Temp Buna-N		