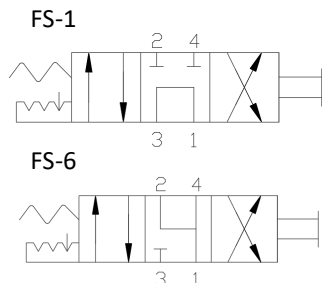


4-Way Manual Directional Control Hydraulic Cartridge Valve

Functional Symbol



Description:

The 4-Way, 2&3-Position Manual Detented Directional Control Cartridge valve is suited for all 4-way hydraulic circuit applications where manual operation is desired.

Operation:

All 3-position options require detent option.

Features:

- Several actuator options.
- Detented
- Compact size for minimal space requirements.
- Industry standard C10-4 cavity.

Ratings:

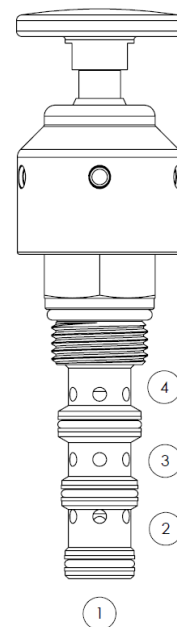
Nominal Rated Flow: 6 GPM (22.7 lpm)

Operating Pressure: 5,000 PSI (345 bar) all ports.

Operating Temperature: -31 to 250°F (-35 to 121°C)

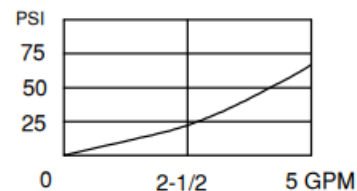
Leak Rate: Less than 82cc (5 in³) per minute

Approx. Weight: .5 lbs. (0.23 kg)



Seal Replacement Kits, External:	
SRK-10-4N	Buna-N
SRK-10-4V	Fluorocarbon (Viton)
Note: Alternate materials available, contact Doering.	

PRESSURE DROP / FLOW



Ordering Information:

DMDA	10 - 4	0	R	N					
Model	Cavity	Spool Fuction		Control		Seal Material		Material/Coating	
DMDA	10 4	0	FS-0	K	Hand Knob	N	Buna-N	Blank	Plated Steel
		1	FS-1	R	Hand Knob, Red	V	Viton	SS	Stainless Steel
		2	FS-2	S	Hand Knob, SST	E	EPDM	SS316	316 SST
		4	FS-4	S316	Hand Knob, 316 SST	W	Low Temp Buna-N		
		5	FS-5						
		6	FS-6						
		7	FS-7						