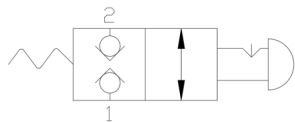


DMDC 2-Way Manual Directional Control Hydraulic Valve

Functional Symbol



Description:

The 2-Way, 2-Position, Normally Closed, Manual Detented Directional Control Cartridge valve is suited for all 2-way hydraulic circuit applications where manual operation is desired.

Operation:

Manual 2-position with detent option.

Features:

- Several actuator options.
- Compact size for minimal space requirements.
- Industry standard C10-2 cavity.
- Soft Seat Zero-Leak Option

Ratings:

Nominal Rated Flow: 5 GPM (18.9 lpm)

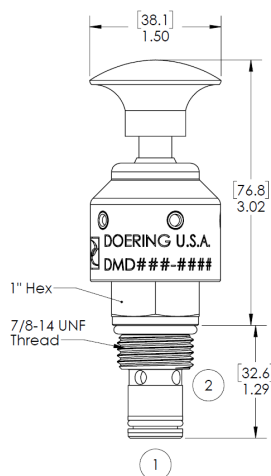
Operating Pressure: 5,000 PSI (345 bar) all ports.

Operating Temperature: -31 to 250°F (-35 to 121°C)

Leak Rate: Hard Seat <2 drops per minute

Soft Seat-Zero Leak

Approx. Weight: .5 lbs. (0.23 kg)



| Seal Replacement Kits, External: | |
|---|----------------------|
| SRK-8542N | Buna-N |
| SRK-8542V | Fluorocarbon (Viton) |
| Note: Alternate materials available, contact Doering. | |

Ordering Information:

DMDC 10-2 H K N

| Model | Cavity | Seat Option | Control | Seal Material | Material/Coating |
|-------------|-------------------|--------------------|--------------------------------|--------------------------|---------------------------|
| DMDC | 10-2 C10-2 | H Hard Seat | K Hand Knob | N Buna-N | Blank Plated Steel |
| | | K Soft Seat | R Hand Knob, Red | V Viton | SS Stainless Steel |
| | | | S Hand Knob, SST | R EPDM | SS316 316 SST |
| | | | S316 Hand Knob, 316 SST | W Low Temp Buna-N | |
| | | | | | |