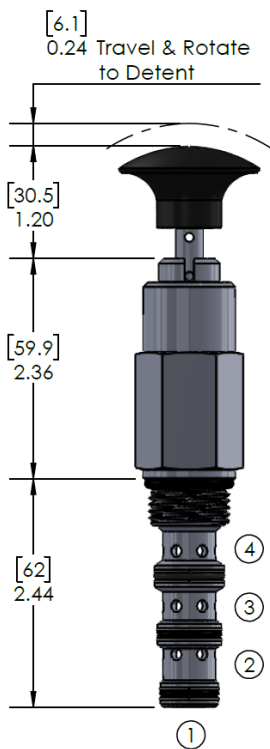
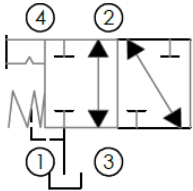


DMP Manual Pull Directional Valve

Functional Symbol:



Description:

A screw-in, spool type, manual pull, cartridge directional valve. For use as a directional control device.

Operation:

The valve allows flow passage from port 3 to port 2 in the neutral position, while port 1 and port 4 is blocked. In the actuated position (pulled) allows flow from port 3 to port 4, and blocks flow to port 1 and port 2.

NOTE: Port 1 is intended to be a tank port only.

Features:

Hardened spool and cage for long life and low leakage.

Optional sealed spool design

Optional rotational lock (detent) position.

Industry common C10-4 cavity.

Ratings:

Nominal Rated Flow: 9 GPM [34.1 lpm]

Operating Pressure:

On ports 2, 3 & 4: 3,500 PSI (241 bar)

On port 1: 180 PSI (12.4 bar) Max.

Operating Temperature: -40 to 250°F (-40 to 120°C)

Leak Rate: 5 in³/min [82 cc/min] Max.

Installation Torque: 25 Ft-lbs [33.9 Nm]

Fluids: Mineral based or synthetic hydraulic fluid with lubricating properties

Seal Replacement Kits, External:	
SRK-8544N	Buna-N
SRK-8544V	Fluorocarbon (Viton)
Note: Alternate materials available, contact Doering.	

Ordering Information:

DMP 10-4 3 K N -

Model	Cavity Size	Spool Function	Actuator	Seals, External	Material, External/ Interior
DMP	10-4 C10-4	3 FS-3	Blank No Knob K Black Plastic Knob	N Buna = N (Nitrile NBR) R EPR/EPDM V Viton (Fluorocarbon FKM)	Blank Plated Steel/Steel Internal S 303/ 17-4 SST S316 316/ 17-4 SST SC316 316SST Exterior/Hardened Steel Internals