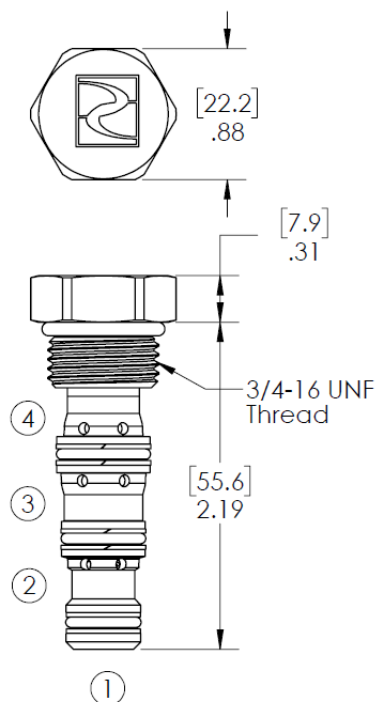
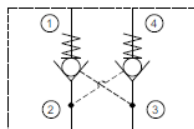


## Dual Pilot Operated Check Valve

### Functional Symbol



#### Seal Replacement Kits, External:

SRK-8504N	Buna-N
SRK-8504V	Fluorocarbon (Viton)

Note: Alternate materials available, contact Doering.

### Description:

A screw-in cartridge, dual pilot operated hydraulic check valve. For use in blocking or load holding circuits.

### Operation:

The valve will block flow from port 1 to port 2, and from port 4 to port 3. Flow is allowed in the opposite direction when pressure is applied to port 2 and/or port 3. The valve has a 3:1 pilot ratio.

### Features:

- Hardened, precision ground parts for durability.
- Low pressure drop
- Compact size for minimal space requirements.
- Industry standard cavity.

### Ratings:

Inlet Rated Flow: 5.0 GPM (19 lpm)

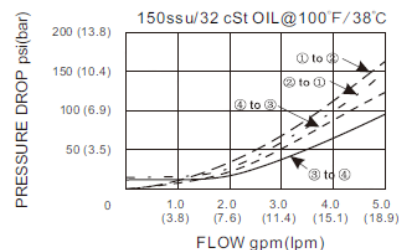
Operating Pressure: 3,500 PSI (241 bar)

Operating Temperature: -30° to 250°f (-22° to 120°c)

Maximum Internal Leakage 0.25 ml/min (5 drops/min).

Fluids: Mineral-based fluids with viscosities of 7.4 to 420 cSt.

Performance Curve Pressure Drop vs. Flow



### Ordering Information:

**DPC 8-4 N 25 -CSZ**

Model	Cavity	Seal Material	Bias Spring	Material / Coating
<b>DPC</b>	<b>8-4</b> 8-4 Cavity	<b>N</b> Buna-N	<b>25</b> 1.7 bar (25 psi) Standard	<b>CSZ</b> Plated Steel
		<b>V</b> Viton	<b>85</b> 5.9 bar (85 psi)	
		<b>R</b> EPDM	<b>135</b> 9.3 bar (135 psi)	
		<b>W</b> Low Temp Buna-N		