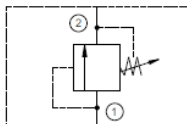


Functional Symbol	Description:
	Symbol 1: A circle with a horizontal line through the center.
	Symbol 2: A circle with a vertical line through the center.
	Symbol 3: A circle with a diagonal line from top-left to bottom-right.
	Symbol 4: A circle with a diagonal line from top-right to bottom-left.
	Symbol 5: A circle with a cross inside.
	Symbol 6: A circle with a dot in the center.
	Symbol 7: A circle with a horizontal line above the center.
	Symbol 8: A circle with a horizontal line below the center.
	Symbol 9: A circle with a vertical line above the center.
	Symbol 10: A circle with a vertical line below the center.



**Operation:**

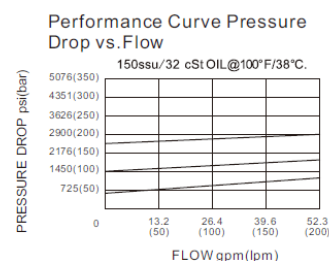
The DRVT blocks flow from (port 1) to (port 2) until sufficient pressure at (port 1) to force the valve open to tank (port 2). The cartridge offers fast response to load changes in typical hydraulic circuits requiring low hysteresis, low pressure rise and essentially zero internal leakage.

**For cross port applications**, will accept maximum pressure at port 2; suitable for use in cross port relief circuits.

### Features:

- The seals on the adjust screw are exposed to system pressure which means this valve can only be adjusted when the pressure is removed.
  - Valve is relatively insensitive to varying oil temperatures and oil contamination.
  - Compact size for minimal space requirements.
  - Optional spring ranges.
  - Industry standard cavity.
- Performance Curve  
Drop vs. Flow

Flow (150ssu/32 cSt Oil)	Pressure Drop (psi)	Pressure Drop (bar)
5076 (350)	5076	350
4351 (300)	4351	300
3626 (250)	3626	250
2900 (200)	2900	200



### Ratings:

Rated Flow: Port 1 to 2: 53 GPM (200 lpm)

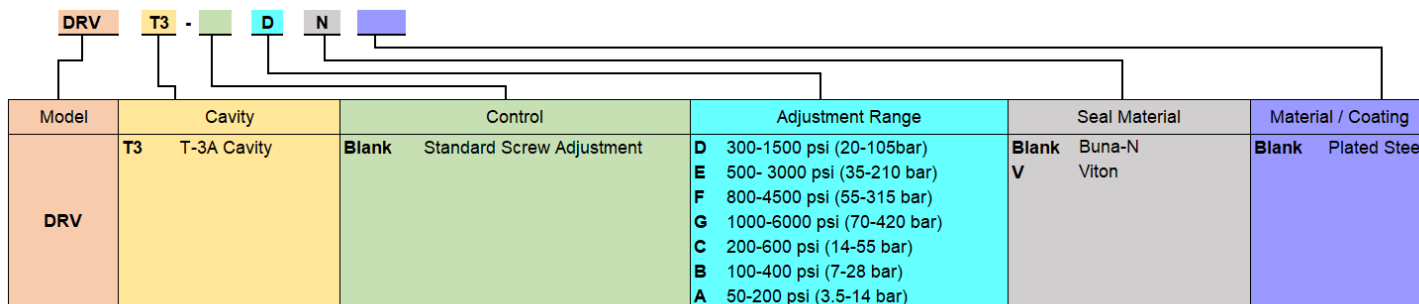
Operating Pressure: 5,000 PSI (350 bar)

Operating Temperature: -22° to 250°f (-30° to 120°c)

Leak Rate: 0.7 ml/min. max. to 90% of nominal setting.

Fluids: Mineral-based fluids with viscosities of 7.4 to 420 cSt.

### Ordering Information:



\*Custom set pressure also available