

DSV08-47 4-Way, 3-Position Solenoid Cartridge Valve

Description:

Solenoid Operated 4-Way, 3-Position Directional Control screw-in-cartridge, direct acting, spool type. Suited for all 4-way hydraulic circuit applications where solenoid actuation is desired.

Operation:

This valve is direct actuated and requires no minimum hydraulic pressure for operation and is spring centered to the neutral position.

Features:

- Hardened, precision ground parts for durability.
- Efficient wet-armature construction
- Continuous-duty solenoid.
- Industry standard C08-4 cavity. Compact Size
- Manual override option
- Optional coil voltages and terminations.

Ratings:

Nominal Rated Flow: 3.5 GPM (13.2 lpm)

Operating Pressure: 3,000 PSI (210 bar), Maximum operating pressure on port 1 is 290 PSI (20 bar)

Operating Temperature: -22 to 250°F (-30 to 120°C)

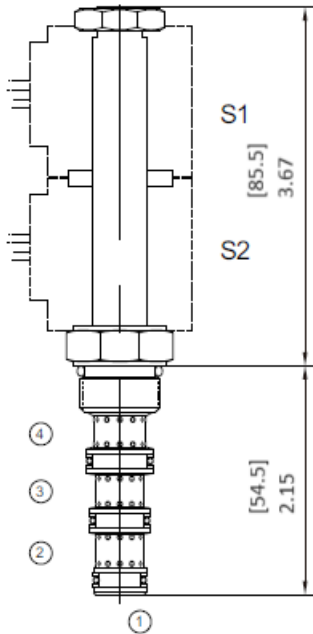
Leak Rate: Less than 164cc (10 in³) per minute

Approx. Weight: .5 lbs. (0.23 kg)

Fluids: Mineral-based fluids with viscosities of 7.4 to 420 cSt.

Valve Hex size: 7/8" (22.2 mm)

Valve Installation Torque: 20-24 lbf ft.



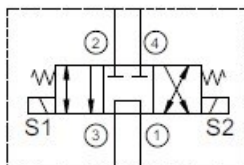
Seal Replacement Kits, External:	
SRK-08-4N	Buna-N
SRK-08-4V	Fluorocarbon (Viton)
Note: Alternate materials available, contact Doering.	

See Page 2 for Functional Symbols and Ordering Information

DSV08-47 4-Way, 3-Position Solenoid Cartridge Valve

Functional Symbol

FS-A



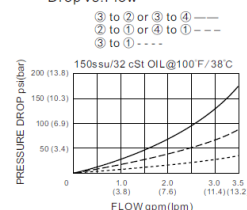
Operation FS-A:

When de-energized, the valve blocks cylinder ports, while allowing flow from 3 to 1.

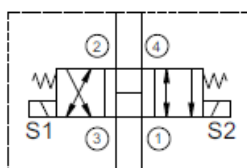
When coil S1 is energized, flow is allowed from 3 to 2, and from 4 to 1.

When Coil S2 is energized, flow is allowed from 3 to 4 and from 2 to 1.

Performance Curve Pressure Drop vs. Flow



FS-B



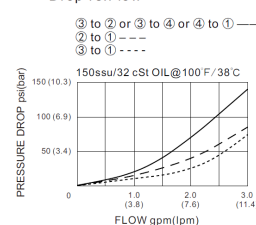
Operation FS-B:

When de-energized, the valve has all ports connected.

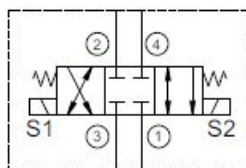
When coil S1 is energized, flow is allowed from 3 to 4, and from 2 to 1.

When Coil S2 is energized, flow is allowed from 3 to 2 and from 4 to 1.

Performance Curve Pressure Drop vs. Flow



FS-C



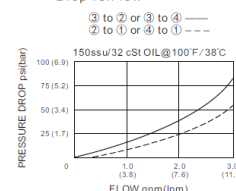
Operation FS-C:

When de-energized, the valve blocks all ports.

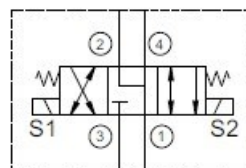
When coil S1 is energized, flow is allowed from 3 to 4, and from 2 to 1.

When Coil S2 is energized, flow is allowed from 3 to 2 and from 4 to 1.

Performance Curve Pressure Drop vs. Flow



FS-D



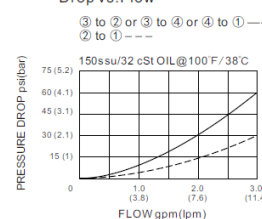
Operation FS-D:

When de-energized, the valve blocks inlet port 3, while allowing flow from 2 and 4 to 1.

When coil S1 is energized, flow is allowed from 3 to 4, and from 2 to 1.

When Coil S2 is energized, flow is allowed from 3 to 2 and from 4 to 1.

Performance Curve Pressure Drop vs. Flow



Ordering Information:

DSV08 - 47 B M N 24 D G

Model	Type	Functional Symbol	Manual Emergency	Seal Material	Voltage	Current Type	Coil Connection
DSV08	47 4-Way, 3-Pos	A FS-A	Blank No Manual	N Buna-N	12 12V	D Direct Current	G DIN43650
		B FS-B	M Manual Operator	V Viton	24 24V	A Alternating Current	R Deutch
		C FS-C		R EPDM	110 110V		L Dual Lead
		D FS-D			220 220V		