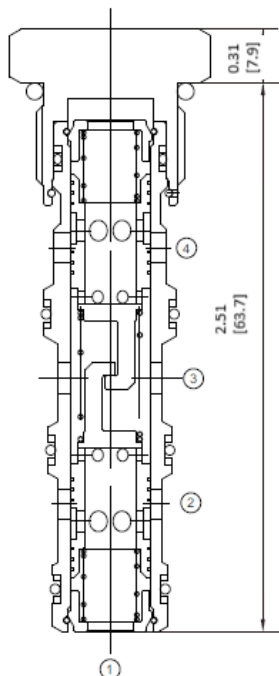
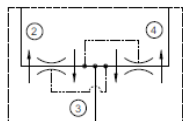


## Flow Divider/Combiner, Hydraulic Cartridge Valve

### Functional Symbol



### Description:

A screw-in cartridge, spool type flow divider/combiner hydraulic valve. For use as a flow divider/combiner, pressure compensated device providing synchronizing flow in dividing and combining modes.

### Operation:

In the dividing mode, the valve will divert input flow from port 3 to port 2 and 4, based on the ratio specified, regardless of operating pressure. The valve will combine input flow from port 2 and port 4.

### Features:

- Hardened, precision ground parts for durability.
- Quiet, modulated response
- Compact size for minimal space requirements.
- Wide operating flow range.
- Synchronizing in dividing and combining modes.
- Industry standard cavity.

### Ratings:

Inlet Rated Flow: 5.0 to 15.0 GPM (19 to 57 lpm)

Operating Pressure: 5,000 PSI (345bar)

Operating Temperature: -22° to 250°f (-30° to 120°c)

Flow Accuracy: 15% from 25-100% of maximum rated flow.

Fluids: Mineral-based fluids with viscosities of 7.4 to 420 cSt.

Seal Replacement Kits, External:	
SRK-8544N	Buna-N
SRK-8544V	Fluorocarbon (Viton)
Note: Alternate materials available, contact Doering.	

### Ordering Information:

FD 10-4 N 22			
Model	Cavity	Seal Material	Adjustment Range
FD	10-4 10-4 Cavity	N	Buna-N
		V	Viton
		R	EPDM
		W	Low Temp Buna-N
		22	1-5 GPM (4-19 lpm) Ratio 50:50
		33	1.5-7.0 GPM (5.5-26.5 lpm) Ratio 50:50
		44	2.5-10.0 GPM (9.5-38.0 lpm) Ratio 50:50
		55	3.0-11.0 GPM (11.5-41.5 lpm) Ratio 50:50
		66	4.0-12.0 GPM (15.0-45.0 lpm) Ratio 50:50
		88	5.0-15.0 GPM (19.0-57.0 lpm) Ratio 50:50