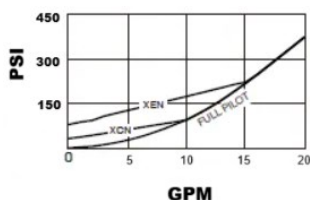
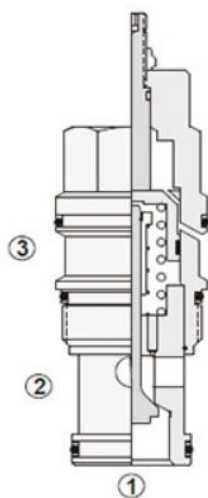
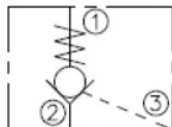


## Pilot-to-Open Check, Hydraulic Cartridge Valve

### Functional Symbol



### Description:

A screw-in cartridge, pilot-to-open check valve. It has a sealed pilot, a steel seat, and is non-vented.

### Operation:

Valve allows free flow from the valve port 2 to the load port 1 and blocks flow in the opposite direction; Pressure at the pilot (port 3) will open the valve from port 1 to port 2. Pilot pressure needed at port 3 to open the valve is directly proportional to the load pressure at port 1. Pressure at port 2 directly opposes pilot pressure.

### Features:

- Extremely low leakage. Hardened seat and poppet for long life.
- Compact size for minimal space requirements.
- Wide operating flow range.
- Standard unsealed pilot allows air trapped in the pilot line to be purged from the circuit.
- Industry standard cavity.

### Ratings:

Inlet Rated Flow: 15.0 GPM (57 lpm)

Operating Pressure: 5,000 PSI (350bar)

Pilot Ratio: 3:1

Maximum Valve Leakage at 110 SS (24 cSt): 0.07 ml/min. (1 drops/min)

Operating Temperature: -40° to 250°f (-40° to 120°c)

Fluids: Mineral-based fluids with viscosities of 7.4 to 420 cSt.

Cavity: T-11A

Installation Torque: 30-37 lbf-ft (40-50 Nm)

### Ordering Information:

PCC B T11 - M NS 4 CSZ

Model	Flow	Cavity	Control	Seal Material	Crack Pressure	Material / Coating
PCC	B	T11	X Standard	N Buna-N	4 4 PSI (0.3 bar)	CSZ Plated Steel
			M Manual Load Release	V Viton	15 15 PSI (1 bar)	
				R EPDM	30 30 PSI (2 bar)	
				W Low Temp Buna-N	50 50 PSI (3.5 bar)	
				NS Buna-N, Sealed Pilot	75 75 PSI (5 bar)	
					100 100 PSI (7 bar)	