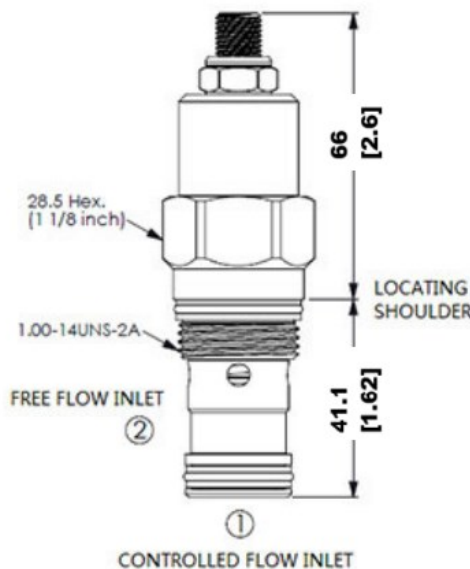
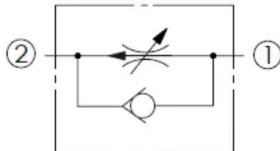


Fully Adjustable Pressure Compensated Flow Control Valve with Reverse Flow Check

Functional Symbol



Seal Replacement Kits, External:	
SRK-T-5AN	Buna-N
SRK-T-5AV	Flurocarbon (Viton)
Note: Alternate materials available, contact Doering.	

Description:

A screw-in cartridge, fully adjustable, pressure-compensated flow controls with reverse flow check.

Operation:

Fully adjustable, pressure-compensated flow controls with reverse flow check provide precise flow regulation for meter-in or meter-out applications where there may be wide pressure fluctuations. They are infinitely adjustable from nearly closed up to the maximum flow. An integral high-capacity check valve provides unrestricted flow from port 2 to port 1.

Features:

- Hardened, precision ground parts for durability.
- Adjustment may be locked in place.
- Compact size for minimal space requirements.
- Industry Common T-5A cavity.

Ratings:

Rated Flow: 12.0 GPM (45 lpm)

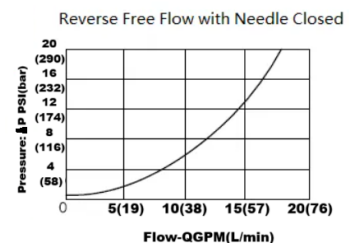
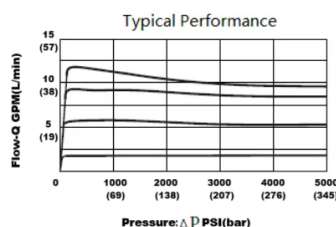
Operating Pressure: 5,000 PSI (345bar)

Operating Temperature: -22° to 250°f (-30° to 120°c)

Fluids: Mineral-based fluids with viscosities of 7.4 to 420 cSt.

Filtration: 25µm or better

Installation Torque: 37 - 44 lbf-ft (50-60 Nm)



Ordering Information:

PCFA T5		-	A	N	-	CSZ	Pressure: Δ P PSI(bar)		Flow: QGPM(L/min)
Model	Cavity	Control		Adjustment Range		Seal Material	Material / Coating		
PCFA	T5 T-5A Cavity	Blank	Std. Screw Adjustment	A	.2 - 12 GPM (0.8 - 45 lpm)	N	Buna-N	CSZ	Plated Steel
				B	2 - 3.0 GPM (0.8 - 11 lpm)	V	Viton		