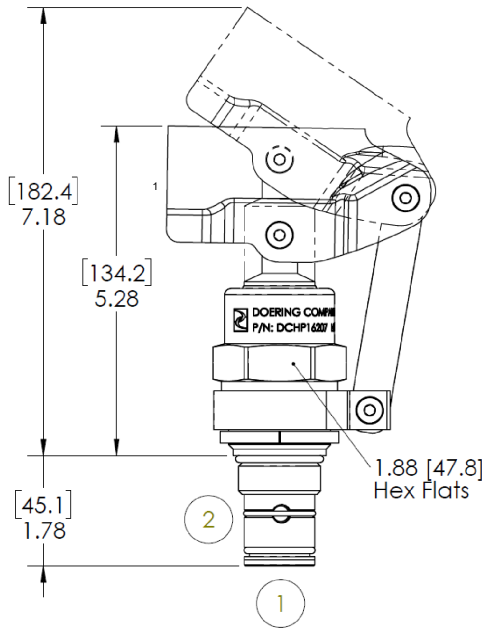
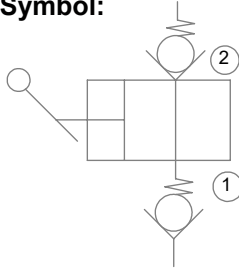


DCHP162 Hydraulic Hand Pump

Functional Symbol:



Description:

Screw-in cartridge-style manual hand pump with dual integrated check valves.

Features:

- Seat made from hardened steel for long life
- Zinc plated to ASTM specifications for 240 hours of salt spray resistance
- Piston is hardened and ground
 - Improved wear and corrosion resistance
 - Improved heat and friction resistance
- Lever socket rotates 360°
- Dual integrated check valves
- Fits industry standard 16-2 cavity
- Competitive price
- Made in the USA

Applications:

- Hydraulic backup
- Hydrostatic testing
- Parking brakes, heavy equipment
- Safety applications

Technical:

Displacement	DCHP16207 1.3 CI (21.3cc)
Operating Temperatures:	Nitrile (NBR, Buna N): -40 to 100° C (-40 to 212° F)
Pressure Rating:	5,000 psi (345 bar)
Cavity:	C-16-2
Leak Rate:	< 3 drops per minute*

*Tested with: Mineral based or synthetics with lubrication properties at viscosities of 7.4 to 420 cSt (50 to 2000 sus)

Ordering Information:

Part Number: DCHP16207 - X X

Operating Pressure/
Displacement:

07 = 700 psi (48 bar)/
1.3 CI (21.3 cc)

Seals:

Nitrile (NBR, Buna N)

Materials:

Plated Steel

Handle: (Spec Sheet: DPH100)

(Blank) = No Handle

16 = 16" Handle

20 = 20" Handle

24 = 24" Handle

30 = 30" Handle